

Table 1.5  
Age-Adjusted SEER Incidence and U.S. Death Rates and 5-Year Relative Survival (Percent)  
By Primary Cancer Site, Sex and Time Period

All Races

Site	Incidence <sup>a</sup> (2010-2014)			US Mortality <sup>b</sup> (2010-2014)			Survival <sup>c</sup> (%) (2007-2013)		
	Total	Males	Females	Total	Males	Females	Total	Males	Females
All Sites	442.7	492.4	408.7	166.1	200.5	141.5	67.0	66.8	67.2
Oral Cavity & Pharynx:	11.2	16.9	6.2	2.5	3.8	1.3	64.5	63.6	66.8
Lip	0.7	1.1	0.3	0.0	0.0	0.0	89.6	89.7	89.2
Tongue	3.3	5.1	1.8	0.6	0.9	0.4	65.5	65.8	64.5
Salivary gland	1.3	1.7	1.0	0.2	0.4	0.1	71.9	63.9	82.7
Floor of mouth	0.5	0.7	0.3	0.0	0.0	0.0	53.2	52.0	56.2
Gum & other oral cavity	1.5	1.8	1.3	0.4	0.5	0.3	59.1	54.8	64.3
Nasopharynx	0.6	0.9	0.4	0.2	0.3	0.1	61.2	59.7	64.8
Tonsil	2.0	3.4	0.7	0.2	0.4	0.1	73.4	73.9	70.8
Oropharynx	0.4	0.7	0.2	0.2	0.4	0.1	43.9	45.2	39.2
Hypopharynx	0.6	1.0	0.2	0.1	0.2	0.0	33.0	33.1	32.1
Other oral cavity & pharynx	0.3	0.4	0.1	0.4	0.8	0.2	42.1	43.9	36.4
Digestive System:	81.5	99.3	66.7	41.6	53.4	31.9	43.9	41.7	46.7
Esophagus	4.2	7.3	1.7	4.1	7.3	1.5	18.8	18.7	19.2
Stomach	7.3	9.9	5.2	3.2	4.4	2.3	30.6	28.4	34.1
Small intestine	2.3	2.6	2.0	0.4	0.5	0.3	67.5	67.0	68.1
Colon & Rectum:	40.1	46.0	35.1	14.8	17.7	12.4	64.9	64.5	65.2
Colon	28.2	31.3	25.8	-	-	-	64.1	64.0	64.1
Rectum	11.8	14.8	9.4	-	-	-	66.7	65.5	68.2
Anus, anal canal & anorectum	1.8	1.5	2.1	0.2	0.2	0.3	66.9	60.3	70.9
Liver & intrahepatic bile duct	8.6	13.3	4.6	6.3	9.2	3.7	17.6	17.2	18.6
Gallbladder	1.2	0.9	1.4	0.6	0.5	0.7	18.2	16.7	18.8
Other biliary	1.9	2.4	1.6	0.4	0.5	0.4	17.0	18.2	15.7
Pancreas	12.5	14.2	11.1	10.9	12.6	9.5	8.2	8.2	8.1
Retroperitoneum	0.4	0.4	0.4	0.1	0.1	0.1	54.9	55.1	54.6
Peritoneum, omentum & mesentery	0.5	0.1	0.9	0.3	0.1	0.4	31.7	41.8	30.9
Other digestive system	0.7	0.8	0.6	0.3	0.4	0.3	9.3	8.3	10.1
Respiratory System:	59.8	72.3	50.1	46.0	58.1	36.8	21.1	19.9	22.6
Nose, nasal cavity & middle ear	0.7	0.9	0.5	0.1	0.2	0.1	57.1	58.6	54.7
Larynx	3.1	5.4	1.1	1.0	1.9	0.4	60.7	61.3	58.1
Lung & bronchus	55.8	65.7	48.4	44.7	55.9	36.3	18.1	15.2	21.3
Pleura <sup>d</sup>	0.0	0.0	0.0	0.1	0.1	0.0	25.8	26.7	24.4
Trachea & other respiratory organs	0.2	0.3	0.1	0.1	0.1	0.0	52.9	53.7	50.7
Bones & joints	0.9	1.1	0.8	0.4	0.5	0.3	67.7	66.0	70.0
Soft tissue (including heart)	3.4	4.1	2.9	1.3	1.5	1.2	64.4	63.7	65.3
Skin (excl. basal & squamous):	24.4	32.1	18.7	3.6	5.6	2.1	91.1	89.1	93.7
Melanoma of the skin	22.3	29.2	17.3	2.7	4.0	1.7	91.7	89.7	94.2
Other non-epithelial skin	2.0	2.9	1.4	0.9	1.6	0.4	84.7	82.9	87.1
Breast	67.0	1.2	124.9	11.8	0.3	21.2	89.7	83.6	89.7
Breast ( <i>in situ</i> )	16.4	0.1	31.2	-	-	-	100.0	99.9	100.0

Note: Incidence and death rates are per 100,000 and are age-adjusted to the 2000 US Std Population (19 age groups - Census P25-1130).

<sup>a</sup> SEER 18 areas (San Francisco, Connecticut, Detroit, Hawaii, Iowa, New Mexico, Seattle, Utah, Atlanta, San Jose-Monterey, Los Angeles, Alaska Native Registry, Rural Georgia, California excluding SF/SJM/LA, Kentucky, Louisiana, New Jersey and Georgia excluding ATL/RG).

<sup>b</sup> US Mortality Files, National Center for Health Statistics, Centers for Disease Control and Prevention.

<sup>c</sup> SEER 18 areas. Based on follow-up of patients into 2014.

<sup>d</sup> Mesotheliomas of the Pleura are included in the separate group Mesothelioma for incidence but are included in the Pleura grouping for mortality.

- Statistic could not be calculated due to less than 16 cases in the time interval.

Table 1.5 - continued  
 Age-Adjusted SEER Incidence and U.S. Death Rates and 5-Year Relative Survival (Percent)  
 By Primary Cancer Site, Sex and Time Period

All Races

Site	Incidence <sup>a</sup> (2010-2014)			US Mortality <sup>b</sup> (2010-2014)			Survival <sup>c</sup> (%) (2007-2013)		
	Total	Males	Females	Total	Males	Females	Total	Males	Females
Female Genital System:	26.1	-	49.1	8.4	-	15.2	69.3	-	69.3
Cervix uteri	3.8	-	7.4	1.2	-	2.3	67.1	-	67.1
Corpus uteri	13.2	-	24.9	1.1	-	2.0	82.7	-	82.7
Uterus, NOS	0.4	-	0.8	1.4	-	2.6	29.8	-	29.8
Ovary <sup>d</sup>	6.3	-	11.7	4.1	-	7.4	46.5	-	46.5
Vagina	0.4	-	0.7	0.1	-	0.2	46.6	-	46.6
Vulva	1.4	-	2.5	0.3	-	0.5	72.1	-	72.1
Other female genital system	0.6	-	1.2	0.2	-	0.3	54.5	-	54.5
Male Genital System:	58.1	126.7	-	8.3	20.5	-	98.3	98.3	-
Prostate	54.7	119.8	-	8.1	20.1	-	98.6	98.6	-
Testis	2.9	5.7	-	0.1	0.3	-	95.1	95.1	-
Penis	0.4	0.9	-	0.1	0.2	-	68.3	68.3	-
Other male genital system	0.1	0.3	-	0.0	0.0	-	83.5	83.5	-
Urinary System:	36.3	57.6	19.7	8.5	13.6	4.8	75.3	76.1	73.7
Urinary bladder	19.8	34.9	8.4	4.4	7.6	2.2	77.3	78.6	73.3
Kidney & renal pelvis	15.6	21.4	10.7	3.9	5.6	2.4	74.1	73.5	75.2
Ureter	0.5	0.8	0.3	0.1	0.1	0.1	46.5	47.8	44.4
Other urinary system	0.3	0.6	0.2	0.1	0.2	0.1	49.3	54.2	40.2
Eye & Orbit	0.8	1.0	0.7	0.1	0.1	0.1	82.7	82.4	83.1
Brain & Nervous System: <sup>e</sup>	6.4	7.5	5.3	4.3	5.3	3.5	33.6	32.4	35.1
Brain	6.0	7.1	4.9	-	-	-	30.5	29.8	31.4
Cranial nerves & other nervous system	0.4	0.4	0.4	-	-	-	78.6	76.3	80.8
Endocrine System:	14.9	7.9	21.7	0.8	0.8	0.8	96.3	92.2	97.7
Thyroid	14.2	7.1	21.0	0.5	0.5	0.5	98.2	95.8	98.8
Other endocrine & thymus	0.7	0.8	0.7	0.3	0.3	0.3	64.5	65.1	63.8
Lymphoma:	22.0	26.7	18.3	6.2	8.0	4.9	73.1	71.7	74.7
Hodgkin lymphoma	2.6	2.9	2.3	0.3	0.4	0.3	86.4	85.6	87.4
Non-Hodgkin lymphoma	19.5	23.7	16.0	5.9	7.6	4.6	71.0	69.5	72.7
Myeloma	6.6	8.3	5.2	3.3	4.2	2.7	49.6	49.6	49.5
Leukemia:	13.7	17.6	10.7	6.8	9.1	5.1	60.6	61.6	59.2
Lymphocytic:	6.8	9.0	5.1	1.9	2.6	1.3	79.0	79.6	78.1
Acute lymphocytic	1.7	1.9	1.5	0.4	0.5	0.4	68.2	68.1	68.3
Chronic lymphocytic	4.7	6.4	3.3	1.3	1.9	0.9	83.2	83.4	82.9
Other lymphocytic	0.4	0.6	0.2	0.1	0.2	0.1	81.8	85.2	71.4
Myeloid & Monocytic:	6.4	7.9	5.2	3.4	4.4	2.6	39.6	39.2	40.0
Acute myeloid	4.2	5.2	3.6	2.8	3.6	2.2	26.9	25.8	28.2
Chronic myeloid	1.8	2.3	1.4	0.3	0.4	0.2	66.9	65.7	68.6
Acute monocytic	0.2	0.3	0.2	0.0	0.0	0.0	23.5	20.8	27.0
Other myeloid & monocytic	0.2	0.2	0.1	0.2	0.3	0.2	33.8	35.3	31.9
Other leukemia:	0.5	0.6	0.4	1.6	2.1	1.2	33.5	33.7	33.2
Other acute leukemia	0.2	0.3	0.2	0.5	0.7	0.4	20.8	21.9	19.4
Aleukemic, subleukemic & NOS	0.3	0.4	0.2	1.0	1.4	0.8	42.4	42.8	41.9
Kaposi Sarcoma <sup>f</sup>	0.5	0.9	0.1	-	-	-	74.1	73.8	75.3
Mesothelioma <sup>f</sup>	0.9	1.7	0.4	-	-	-	9.0	7.0	15.0
Ill-defined & unspecified	8.1	9.5	7.1	12.1	15.4	9.7	18.3	21.9	14.6

Note: Incidence and death rates are per 100,000 and are age-adjusted to the 2000 US Std Population (19 age groups - Census P25-1130).

<sup>a</sup> SEER 18 areas (San Francisco, Connecticut, Detroit, Hawaii, Iowa, New Mexico, Seattle, Utah, Atlanta, San Jose-Monterey, Los Angeles, Alaska Native Registry, Rural Georgia, California excluding SF/SJM/LA, Kentucky, Louisiana, New Jersey and Georgia excluding ATL/RG).

<sup>b</sup> US Mortality Files, National Center for Health Statistics, Centers for Disease Control and Prevention.

<sup>c</sup> SEER 18 areas. Based on follow-up of patients into 2014.

<sup>d</sup> Ovary excludes borderline cases or histologies 8442, 8451, 8462, 8472, and 8473.

<sup>e</sup> Due to coding changes, Brain & Nervous System mortality are no longer shown separately.

<sup>f</sup> Rate not shown for mortality. Category did not exist in mortality coding until 1999.

- Statistic could not be calculated due to less than 16 cases in the time interval.

Table 1.6  
Age-Adjusted SEER Incidence and U.S. Death Rates and 5-Year Relative Survival (Percent)  
By Primary Cancer Site, Sex and Time Period

Site	Whites								
	Incidence <sup>a</sup> (2010-2014)			US Mortality <sup>b</sup> (2010-2014)			Survival <sup>c</sup> (%) (2007-2013)		
	Total	Males	Females	Total	Males	Females	Total	Males	Females
All Sites	451.8	497.1	421.5	166.2	199.8	141.9	67.5	67.0	67.9
Oral Cavity & Pharynx:	11.7	17.6	6.4	2.4	3.8	1.3	65.9	65.4	67.4
Lip	0.8	1.3	0.4	0.0	0.0	0.0	89.8	89.7	90.1
Tongue	3.6	5.5	1.9	0.6	0.9	0.4	67.1	67.6	65.8
Salivary gland	1.3	1.8	1.0	0.3	0.4	0.1	69.8	61.9	81.5
Floor of mouth	0.5	0.8	0.3	0.0	0.0	0.0	54.5	53.2	57.8
Gum & other oral cavity	1.5	1.8	1.3	0.4	0.5	0.3	58.8	54.9	63.6
Nasopharynx	0.4	0.6	0.2	0.1	0.2	0.1	57.9	57.1	59.7
Tonsil	2.2	3.7	0.8	0.2	0.4	0.1	75.2	75.5	73.2
Oropharynx	0.4	0.7	0.2	0.2	0.4	0.1	46.9	48.6	40.0
Hypopharynx	0.6	1.0	0.2	0.1	0.1	0.0	35.6	36.1	33.3
Other oral cavity & pharynx	0.3	0.4	0.1	0.4	0.7	0.2	45.8	47.5	40.0
Digestive System:	79.2	96.3	64.7	40.4	51.9	30.9	44.4	42.2	47.2
Esophagus	4.5	7.7	1.7	4.3	7.6	1.5	19.7	19.7	19.9
Stomach	6.5	9.0	4.5	2.8	3.8	2.0	29.3	27.2	32.8
Small intestine	2.2	2.6	1.9	0.3	0.4	0.3	68.5	67.7	69.5
Colon & Rectum:	39.3	45.0	34.4	14.4	17.2	12.1	65.5	65.2	65.8
Colon	27.7	30.6	25.3	-	-	-	65.0	65.0	65.1
Rectum	11.6	14.4	9.1	-	-	-	66.5	65.8	67.6
Anus, anal canal & anorectum	1.9	1.5	2.3	0.3	0.2	0.3	68.3	61.7	72.2
Liver & intrahepatic bile duct	7.8	11.9	4.1	5.8	8.5	3.5	16.8	16.5	17.6
Gallbladder	1.1	0.8	1.3	0.6	0.4	0.7	18.3	15.9	19.2
Other biliary	1.9	2.3	1.5	0.4	0.5	0.4	17.2	19.1	15.0
Pancreas	12.5	14.2	11.0	10.8	12.6	9.4	8.1	8.2	7.9
Retroperitoneum	0.4	0.4	0.3	0.1	0.1	0.1	54.0	54.4	53.6
Peritoneum, omentum & mesentery	0.6	0.1	1.0	0.3	0.1	0.4	31.1	39.8	30.5
Other digestive system	0.6	0.7	0.6	0.3	0.4	0.3	9.9	9.3	10.4
Respiratory System:	61.3	72.5	52.6	46.7	58.0	38.0	21.3	20.2	22.6
Nose, nasal cavity & middle ear	0.7	0.9	0.5	0.1	0.2	0.1	59.3	61.4	56.1
Larynx	3.1	5.4	1.2	1.0	1.8	0.4	62.0	62.6	59.5
Lung & bronchus	57.3	65.9	50.8	45.5	55.9	37.5	18.3	15.4	21.4
Pleura <sup>d</sup>	0.0	0.1	0.0	0.1	0.1	0.0	22.1	28.7	10.7
Trachea & other respiratory organs	0.2	0.3	0.1	0.1	0.1	0.0	53.2	54.9	48.6
Bones & joints	1.0	1.2	0.9	0.4	0.6	0.4	67.5	65.5	70.3
Soft tissue (including heart)	3.5	4.2	2.9	1.3	1.6	1.1	65.3	64.4	66.5
Skin (excl. basal & squamous):	28.8	37.4	22.4	4.1	6.3	2.4	90.6	88.5	93.4
Melanoma of the skin	26.6	34.4	20.9	3.1	4.6	1.9	91.2	89.1	94.0
Other non-epithelial skin	2.2	3.1	1.5	1.0	1.8	0.5	82.4	80.6	84.9
Breast	67.8	1.2	127.7	11.4	0.3	20.6	90.7	85.9	90.8
Breast ( <i>in situ</i> )	16.1	0.1	31.0	-	-	-	100.0	99.9	100.0

Note: Incidence and death rates are per 100,000 and are age-adjusted to the 2000 US Std Population (19 age groups - Census P25-1130).

<sup>a</sup> SEER 18 areas (San Francisco, Connecticut, Detroit, Hawaii, Iowa, New Mexico, Seattle, Utah, Atlanta, San Jose-Monterey, Los Angeles, Alaska Native Registry, Rural Georgia, California excluding SF/SJM/LA, Kentucky, Louisiana, New Jersey and Georgia excluding ATL/RG).

<sup>b</sup> US Mortality Files, National Center for Health Statistics, Centers for Disease Control and Prevention.

<sup>c</sup> SEER 18 areas. Based on follow-up of patients into 2014.

<sup>d</sup> Mesotheliomas of the Pleura are included in the separate group Mesothelioma for incidence but are included in the Pleura grouping for mortality.

- Statistic could not be calculated due to less than 16 cases in the time interval.

Table 1.6 - continued  
 Age-Adjusted SEER Incidence and U.S. Death Rates and 5-Year Relative Survival (Percent)  
 By Primary Cancer Site, Sex and Time Period

Site	Whites								
	Incidence <sup>a</sup> (2010-2014)			US Mortality <sup>b</sup> (2010-2014)			Survival <sup>c</sup> (%) (2007-2013)		
	Total	Males	Females	Total	Males	Females	Total	Males	Females
Female Genital System:	26.6	-	50.6	8.2	-	15.1	70.6	-	70.6
Cervix uteri	3.7	-	7.4	1.1	-	2.1	68.7	-	68.7
Corpus uteri	13.4	-	25.6	1.0	-	1.8	84.9	-	84.9
Uterus, NOS	0.4	-	0.7	1.3	-	2.4	31.7	-	31.7
Ovary <sup>d</sup>	6.5	-	12.2	4.2	-	7.7	46.6	-	46.6
Vagina	0.4	-	0.7	0.1	-	0.2	46.9	-	46.9
Vulva	1.5	-	2.7	0.3	-	0.5	71.4	-	71.4
Other female genital system	0.7	-	1.2	0.2	-	0.3	53.7	-	53.7
Male Genital System:	56.1	120.8	-	7.8	19.2	-	98.5	98.5	-
Prostate	52.1	112.8	-	7.5	18.7	-	98.9	98.9	-
Testis	3.5	6.8	-	0.1	0.3	-	95.3	95.3	-
Penis	0.4	0.9	-	0.1	0.2	-	67.7	67.7	-
Other male genital system	0.1	0.3	-	0.0	0.0	-	84.9	84.9	-
Urinary System:	38.7	61.4	20.7	8.8	14.2	4.9	75.7	76.3	74.2
Urinary bladder	21.7	38.1	9.1	4.6	8.1	2.2	77.8	78.8	74.4
Kidney & renal pelvis	16.1	21.9	11.0	4.0	5.8	2.5	74.1	73.5	75.2
Ureter	0.6	0.8	0.4	0.1	0.2	0.1	47.4	48.6	45.2
Other urinary system	0.3	0.6	0.2	0.1	0.2	0.1	48.7	51.4	42.6
Eye & Orbit	1.0	1.1	0.9	0.1	0.1	0.1	81.9	81.6	82.4
Brain & Nervous System: <sup>e</sup>	7.0	8.3	5.9	4.7	5.7	3.8	32.4	31.2	33.9
Brain	6.6	7.9	5.5	-	-	-	29.4	28.7	30.3
Cranial nerves & other nervous system	0.4	0.4	0.4	-	-	-	79.7	76.6	82.4
Endocrine System:	15.6	8.4	23.0	0.8	0.8	0.7	96.7	92.9	98.0
Thyroid	14.9	7.6	22.4	0.5	0.5	0.5	98.4	96.1	98.9
Other endocrine & thymus	0.7	0.8	0.6	0.3	0.3	0.3	63.9	65.1	62.4
Lymphoma:	23.1	27.8	19.3	6.5	8.3	5.0	73.4	72.2	74.9
Hodgkin lymphoma	2.7	3.1	2.4	0.4	0.4	0.3	86.6	86.1	87.3
Non-Hodgkin lymphoma	20.4	24.8	16.9	6.1	7.9	4.8	71.4	70.0	73.0
Myeloma	6.0	7.8	4.6	3.1	4.0	2.4	49.2	49.6	48.7
Leukemia:	14.5	18.5	11.3	7.1	9.5	5.3	61.0	61.8	59.9
Lymphocytic:	7.4	9.7	5.5	2.0	2.8	1.4	79.4	79.9	78.6
Acute lymphocytic	1.9	2.1	1.7	0.5	0.5	0.4	68.3	68.0	68.7
Chronic lymphocytic	5.1	6.8	3.6	1.4	2.0	0.9	83.4	83.6	83.1
Other lymphocytic	0.4	0.7	0.2	0.1	0.2	0.1	82.7	85.6	74.1
Myeloid & Monocytic:	6.6	8.2	5.3	3.5	4.6	2.7	38.7	38.1	39.4
Acute myeloid	4.4	5.4	3.7	2.9	3.8	2.3	26.3	25.1	27.8
Chronic myeloid	1.8	2.4	1.4	0.3	0.4	0.2	65.7	64.5	67.4
Acute monocytic	0.2	0.3	0.2	0.0	0.0	0.0	24.1	21.3	27.9
Other myeloid & monocytic	0.2	0.2	0.1	0.2	0.3	0.2	31.6	31.0	32.6
Other leukemia:	0.5	0.7	0.4	1.6	2.1	1.2	33.0	32.4	33.5
Other acute leukemia	0.2	0.3	0.2	0.6	0.7	0.4	20.2	21.2	18.9
Aleukemic, subleukemic & NOS	0.3	0.4	0.2	1.0	1.4	0.8	42.4	41.3	43.4
Kaposi Sarcoma <sup>f</sup>	0.4	0.8	0.1	-	-	-	77.2	76.4	82.2
Mesothelioma <sup>f</sup>	1.0	1.9	0.4	-	-	-	8.8	6.9	14.4
Ill-defined & unspecified	8.3	9.7	7.1	12.2	15.5	9.7	19.0	23.3	14.5

Note: Incidence and death rates are per 100,000 and are age-adjusted to the 2000 US Std Population (19 age groups - Census P25-1130).

<sup>a</sup> SEER 18 areas (San Francisco, Connecticut, Detroit, Hawaii, Iowa, New Mexico, Seattle, Utah, Atlanta, San Jose-Monterey, Los Angeles, Alaska Native Registry, Rural Georgia, California excluding SF/SJM/LA, Kentucky, Louisiana, New Jersey and Georgia excluding ATL/RG).

<sup>b</sup> US Mortality Files, National Center for Health Statistics, Centers for Disease Control and Prevention.

<sup>c</sup> SEER 18 areas. Based on follow-up of patients into 2014.

<sup>d</sup> Ovary excludes borderline cases or histologies 8442, 8451, 8462, 8472, and 8473.

<sup>e</sup> Due to coding changes, Brain & Nervous System mortality are no longer shown separately.

<sup>f</sup> Rate not shown for mortality. Category did not exist in mortality coding until 1999.

- Statistic could not be calculated due to less than 16 cases in the time interval.

Table 1.7  
Age-Adjusted SEER Incidence and U.S. Death Rates and 5-Year Relative Survival (Percent)  
By Primary Cancer Site, Sex and Time Period

Site	Blacks								
	Incidence <sup>a</sup> (2010-2014)			US Mortality <sup>b</sup> (2010-2014)			Survival <sup>c</sup> (%) (2007-2013)		
	Total	Males	Females	Total	Males	Females	Total	Males	Females
All Sites	459.3	549.7	397.4	194.2	247.3	161.8	61.3	63.8	58.5
Oral Cavity & Pharynx:	9.1	14.2	5.1	2.9	5.0	1.3	48.0	45.1	54.7
Lip	0.1	0.2	-	-	-	-	72.7	66.7	81.8
Tongue	2.1	3.4	1.1	0.5	0.9	0.3	42.5	43.0	41.3
Salivary gland	1.0	1.1	1.0	0.2	0.3	0.1	78.1	70.9	83.9
Floor of mouth	0.5	0.9	0.2	0.0	0.1	-	39.8	41.0	36.0
Gum & other oral cavity	1.3	1.7	1.0	0.3	0.5	0.2	56.1	48.9	63.8
Nasopharynx	0.6	0.9	0.4	0.2	0.4	0.1	55.7	55.3	56.5
Tonsil	1.7	3.0	0.6	0.3	0.5	0.1	54.5	55.6	50.2
Oropharynx	0.6	1.0	0.3	0.4	0.7	0.2	27.9	27.4	30.8
Hypopharynx	0.9	1.6	0.3	0.2	0.3	0.1	20.1	19.8	22.3
Other oral cavity & pharynx	0.3	0.5	0.2	0.7	1.4	0.3	25.6	28.3	18.4
Digestive System:	99.5	121.8	82.9	53.9	70.9	41.8	39.3	35.8	43.2
Esophagus	4.2	6.9	2.3	3.7	6.3	1.9	11.8	10.6	14.4
Stomach	10.2	13.6	7.8	5.9	8.6	4.1	30.3	25.7	36.1
Small intestine	3.8	4.3	3.4	0.6	0.7	0.5	63.9	64.4	63.4
Colon & Rectum:	48.7	56.4	43.2	20.0	25.3	16.5	57.9	55.7	59.9
Colon	36.3	40.9	33.1	-	-	-	56.4	55.3	57.3
Rectum	12.4	15.5	10.2	-	-	-	62.0	56.7	67.9
Anus, anal canal & anorectum	2.0	2.2	1.8	0.3	0.3	0.2	58.0	53.9	62.4
Liver & intrahepatic bile duct	10.1	16.7	5.0	8.2	13.0	4.5	13.4	12.8	15.1
Gallbladder	1.6	1.2	1.9	0.9	0.7	1.0	15.1	13.5	15.7
Other biliary	1.7	1.9	1.6	0.4	0.4	0.4	12.8	10.7	14.3
Pancreas	15.5	17.0	14.3	13.4	15.0	12.1	7.8	6.9	8.5
Retroperitoneum	0.4	0.4	0.4	0.1	0.1	0.0	54.3	59.4	51.1
Peritoneum, omentum & mesentery	0.4	0.1	0.6	0.2	0.1	0.2	28.2	36.6	26.4
Other digestive system	0.9	1.0	0.7	0.4	0.5	0.3	5.6	5.3	6.2
Respiratory System:	68.4	93.4	51.2	50.0	71.7	35.4	18.5	17.0	20.4
Nose, nasal cavity & middle ear	0.6	0.8	0.4	0.1	0.2	0.1	46.7	43.7	50.9
Larynx	4.5	8.5	1.6	1.7	3.4	0.6	51.5	52.1	49.1
Lung & bronchus	63.0	83.7	49.0	48.0	68.0	34.6	15.3	12.5	18.8
Pleura <sup>d</sup>	-	-	-	0.0	0.1	0.0	-	-	-
Trachea & other respiratory organs	0.2	0.2	0.1	0.1	0.1	0.0	46.7	43.3	54.4
Bones & joints	0.7	0.8	0.6	0.4	0.5	0.3	67.0	67.3	66.8
Soft tissue (including heart)	3.3	3.4	3.2	1.5	1.5	1.5	59.6	59.8	59.3
Skin (excl. basal & squamous):	2.1	2.3	2.0	0.8	1.2	0.6	80.9	77.3	83.6
Melanoma of the skin	1.1	1.1	1.0	0.4	0.5	0.4	64.6	57.9	68.7
Other non-epithelial skin	1.1	1.1	1.0	0.4	0.7	0.2	93.3	90.4	94.7
Breast	71.1	1.9	125.1	17.1	0.5	29.2	80.5	69.2	80.6
Breast ( <i>in situ</i> )	17.6	0.2	31.4	-	-	-	100.0	77.2	100.0

Note: Incidence and death rates are per 100,000 and are age-adjusted to the 2000 US Std Population (19 age groups - Census P25-1130).

<sup>a</sup> SEER 18 areas (San Francisco, Connecticut, Detroit, Hawaii, Iowa, New Mexico, Seattle, Utah, Atlanta, San Jose-Monterey, Los Angeles, Alaska Native Registry, Rural Georgia, California excluding SF/SJM/LA, Kentucky, Louisiana, New Jersey and Georgia excluding ATL/RG).

<sup>b</sup> US Mortality Files, National Center for Health Statistics, Centers for Disease Control and Prevention.

<sup>c</sup> SEER 18 areas. Based on follow-up of patients into 2014.

<sup>d</sup> Mesotheliomas of the Pleura are included in the separate group Mesothelioma for incidence but are included in the Pleura grouping for mortality.

- Statistic could not be calculated due to less than 16 cases in the time interval.

Table 1.7 - continued  
 Age-Adjusted SEER Incidence and U.S. Death Rates and 5-Year Relative Survival (Percent)  
 By Primary Cancer Site, Sex and Time Period

Site	Blacks								
	Incidence <sup>a</sup> (2010-2014)			US Mortality <sup>b</sup> (2010-2014)			Survival <sup>c</sup> (%) (2007-2013)		
	Total	Males	Females	Total	Males	Females	Total	Males	Females
Female Genital System:	26.2	-	46.5	11.3	-	19.2	55.5	-	55.5
Cervix uteri	4.8	-	8.7	2.1	-	3.8	56.2	-	56.2
Corpus uteri	13.2	-	23.3	1.9	-	3.2	63.8	-	63.8
Uterus, NOS	0.8	-	1.5	2.9	-	5.0	23.9	-	23.9
Ovary <sup>d</sup>	5.4	-	9.4	3.8	-	6.4	37.2	-	37.2
Vagina	0.6	-	1.0	0.2	-	0.3	45.6	-	45.6
Vulva	1.0	-	1.8	0.2	-	0.3	73.4	-	73.4
Other female genital system	0.5	-	0.9	0.2	-	0.3	54.3	-	54.3
Male Genital System:	81.9	191.5	-	15.4	42.4	-	96.4	96.4	-
Prostate	80.7	188.7	-	15.2	42.0	-	96.6	96.6	-
Testis	0.7	1.5	-	0.1	0.1	-	91.0	91.0	-
Penis	0.4	1.0	-	0.1	0.3	-	59.4	59.4	-
Other male genital system	0.1	0.3	-	0.0	0.0	-	61.8	61.8	-
Urinary System:	31.2	46.9	19.9	7.4	11.1	5.0	70.1	71.2	68.3
Urinary bladder	12.5	21.0	6.8	3.6	5.4	2.5	64.4	68.6	55.8
Kidney & renal pelvis	18.0	25.0	12.6	3.7	5.5	2.4	74.2	73.3	75.5
Ureter	0.2	0.3	0.2	0.0	0.1	0.0	30.9	23.6	35.7
Other urinary system	0.4	0.7	0.3	0.1	0.1	0.1	40.3	58.2	22.2
Eye & Orbit	0.3	0.3	0.3	0.0	0.0	0.0	90.8	89.5	91.2
Brain & Nervous System: <sup>e</sup>	4.0	4.8	3.5	2.6	3.2	2.1	39.6	37.5	41.8
Brain	3.7	4.4	3.1	-	-	-	36.0	34.3	37.8
Cranial nerves & other nervous system	0.3	0.4	0.3	-	-	-	75.4	74.4	75.8
Endocrine System:	9.6	4.6	13.9	0.9	0.8	0.9	93.9	85.2	96.1
Thyroid	8.7	3.7	13.0	0.5	0.4	0.6	97.2	93.7	97.9
Other endocrine & thymus	0.9	0.9	0.9	0.3	0.4	0.3	65.1	60.6	69.3
Lymphoma:	17.2	20.8	14.4	4.6	5.9	3.7	68.7	65.1	72.8
Hodgkin lymphoma	2.6	3.1	2.2	0.3	0.4	0.2	83.5	80.7	86.7
Non-Hodgkin lymphoma	14.6	17.6	12.2	4.3	5.5	3.5	65.1	61.3	69.4
Myeloma	13.2	15.9	11.4	6.3	7.5	5.5	50.2	49.7	50.7
Leukemia:	10.9	14.0	8.8	5.7	7.5	4.6	54.6	55.9	52.9
Lymphocytic:	4.8	6.6	3.5	1.5	2.2	1.1	69.7	70.8	68.1
Acute lymphocytic	1.0	1.1	0.9	0.3	0.4	0.3	64.2	66.2	61.1
Chronic lymphocytic	3.6	5.1	2.5	1.2	1.7	0.8	72.3	72.1	72.1
Other lymphocytic	0.3	0.4	0.1	0.1	0.1	0.1	66.1	74.6	42.5
Myeloid & Monocytic:	5.6	6.8	4.8	2.7	3.4	2.2	42.8	42.0	43.5
Acute myeloid	3.7	4.5	3.2	2.1	2.7	1.8	28.7	27.7	29.6
Chronic myeloid	1.6	2.0	1.4	0.3	0.4	0.3	68.3	65.2	71.6
Acute monocytic	0.1	0.2	0.1	0.0	0.0	-	23.7	17.7	30.1
Other myeloid & monocytic	0.1	0.2	0.1	0.2	0.2	0.1	42.8	52.0	29.6
Other leukemia:	0.5	0.6	0.5	1.5	2.0	1.2	33.9	37.3	29.6
Other acute leukemia	0.2	0.3	0.2	0.4	0.5	0.3	21.7	23.5	18.7
Aleukemic, subleukemic & NOS	0.3	0.4	0.3	1.1	1.5	0.9	39.8	46.1	33.2
Kaposi Sarcoma <sup>f</sup>	1.1	2.2	0.2	-	-	-	64.5	65.8	48.2
Mesothelioma <sup>f</sup>	0.5	1.0	0.3	-	-	-	13.7	8.9	24.8
Ill-defined & unspecified	9.0	10.0	8.1	13.4	17.5	10.7	13.5	12.4	14.3

Note: Incidence and death rates are per 100,000 and are age-adjusted to the 2000 US Std Population (19 age groups - Census P25-1130).

<sup>a</sup> SEER 18 areas (San Francisco, Connecticut, Detroit, Hawaii, Iowa, New Mexico, Seattle, Utah, Atlanta, San Jose-Monterey, Los Angeles, Alaska Native Registry, Rural Georgia, California excluding SF/SJM/LA, Kentucky, Louisiana, New Jersey and Georgia excluding ATL/RG).

<sup>b</sup> US Mortality Files, National Center for Health Statistics, Centers for Disease Control and Prevention.

<sup>c</sup> SEER 18 areas. Based on follow-up of patients into 2014.

<sup>d</sup> Ovary excludes borderline cases or histologies 8442, 8451, 8462, 8472, and 8473.

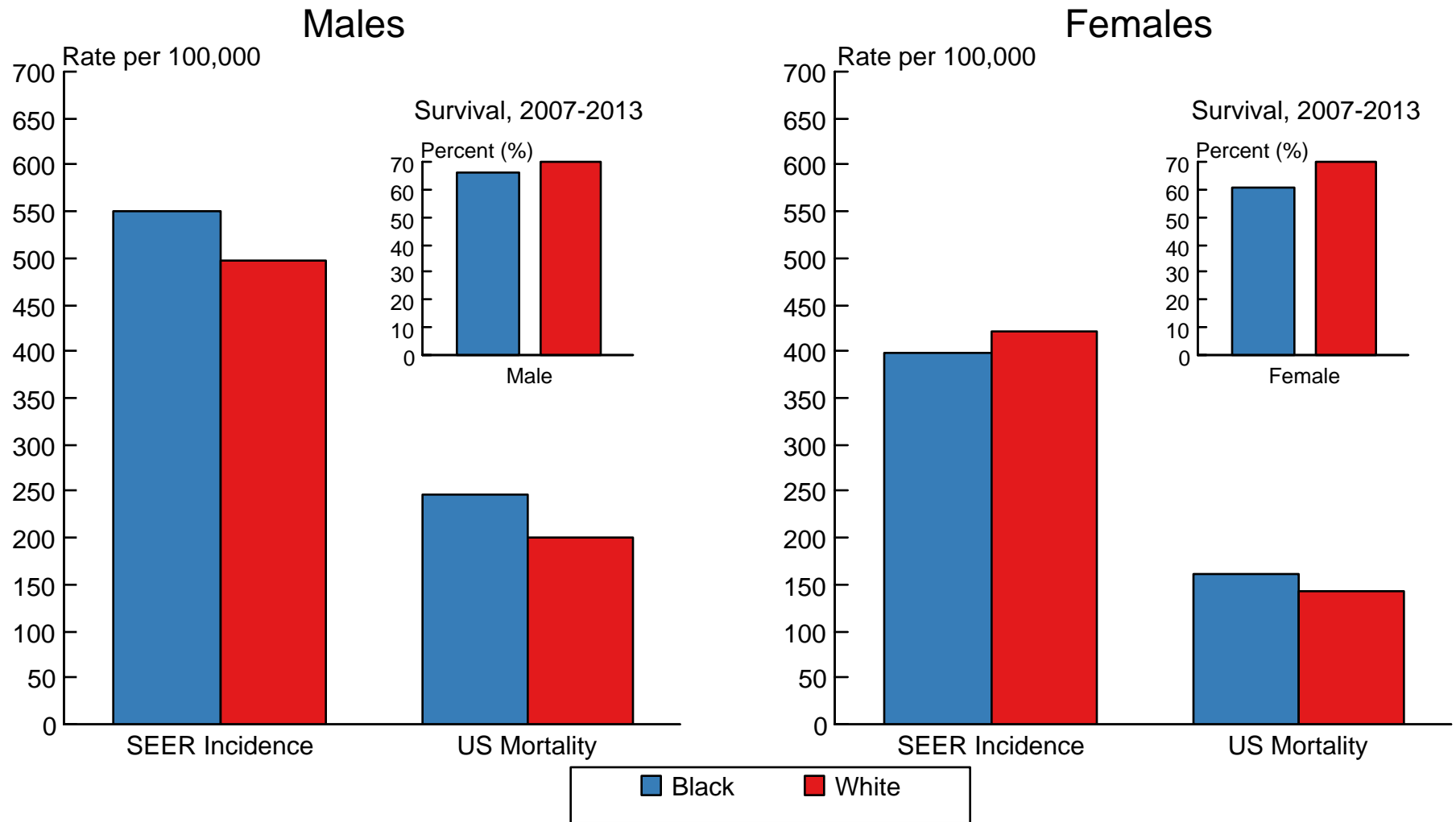
<sup>e</sup> Due to coding changes, Brain & Nervous System mortality are no longer shown separately.

<sup>f</sup> Rate not shown for mortality. Category did not exist in mortality coding until 1999.

- Statistic could not be calculated due to less than 16 cases in the time interval.

Figure 1.9

# SEER Incidence<sup>a</sup> and US Death Rates,<sup>b</sup> 2010-2014 5-Year Relative Survival,<sup>c</sup> 2007-2013 All Cancer Combined, by Race and Sex



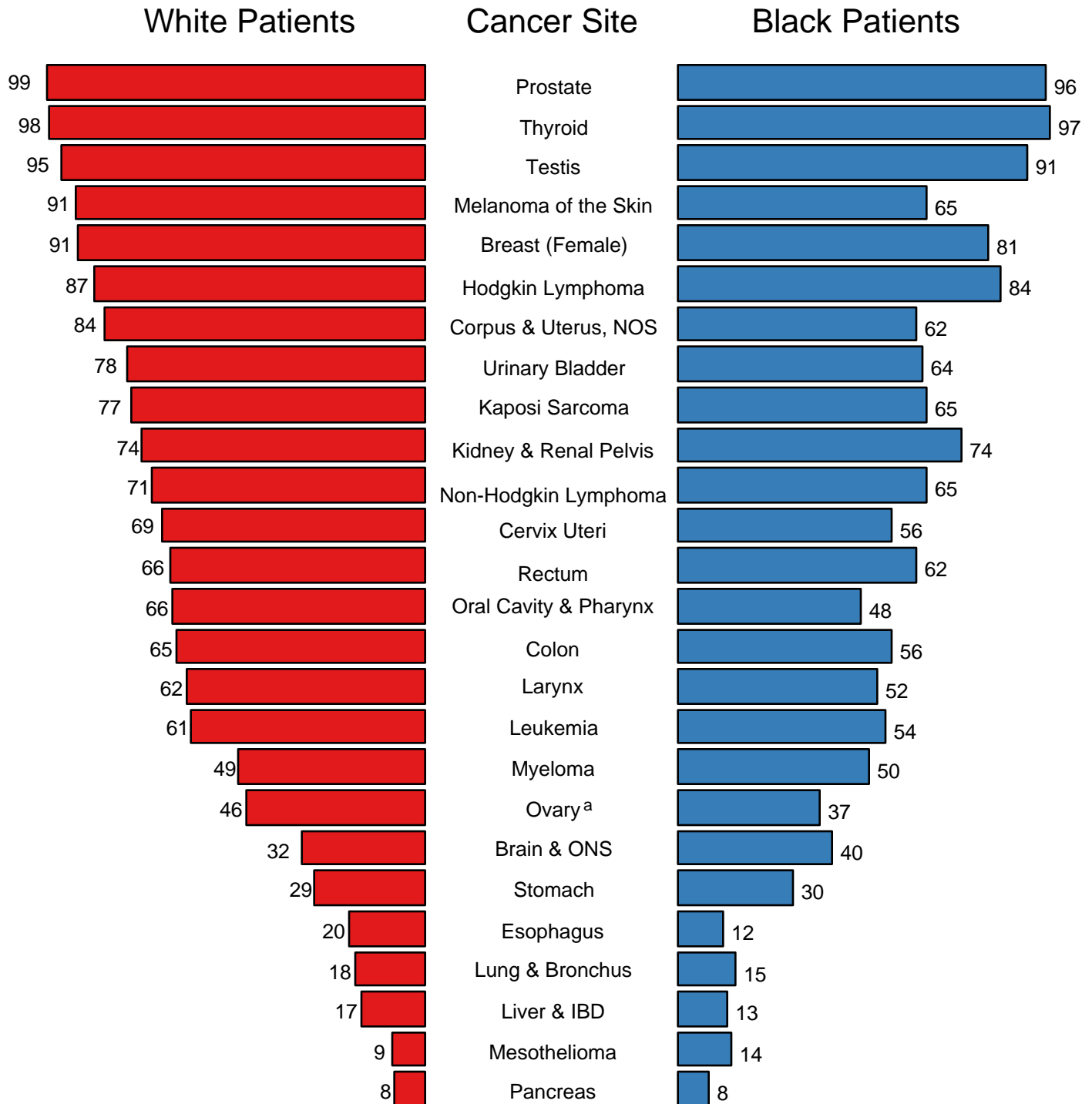
<sup>a</sup> Incidence rates are from the SEER 18 areas (San Francisco, Connecticut, Detroit, Hawaii, Iowa, New Mexico, Seattle, Utah, Atlanta, San Jose-Monterey, Los Angeles, Alaska Native Registry, Rural Georgia, California excluding SF/SJM/LA, Kentucky, Louisiana, New Jersey and Georgia excluding ATL/RG) and are age-adjusted to the 2000 US Std Population (19 age groups - Census P25-1103).

<sup>b</sup> Death rates are from the US Mortality Files, National Center for Health Statistics, Centers for Disease Control and Prevention and are age-adjusted to the 2000 US Std Population (19 age groups - Census P25-1103).

<sup>c</sup> Survival rates are from the SEER 18 areas (San Francisco, Connecticut, Detroit, Hawaii, Iowa, New Mexico, Seattle, Utah, Atlanta, San Jose-Monterey, Los Angeles, Alaska Native Registry, Rural Georgia, California excluding SF/SJM/LA, Kentucky, Louisiana, New Jersey and Georgia excluding ATL/RG).

Figure 1.11

## 5-Year Relative Survival (%) SEER Program, 2007-2013 Both Sexes, by Race and Cancer Site



Source: SEER 18 areas (San Francisco, Connecticut, Detroit, Hawaii, Iowa, New Mexico, Seattle, Utah, Atlanta, San Jose-Monterey, Los Angeles, Alaska Native Registry, Rural Georgia, California excluding SF/SJM/LA, Kentucky, Louisiana, New Jersey and Georgia excluding ATL/RG).

<sup>a</sup> Ovary excludes borderline cases or histologies 8442, 8451, 8462, 8472, and 8473.



Table 2.8  
All Cancer Sites (Invasive)

5-Year Relative and Period Survival (Percent) by Race, Sex, Diagnosis Year and Age

	All Races			Whites			Blacks		
	Total	Males	Females	Total	Males	Females	Total	Males	Females
5-Year Relative Survival (Percent)									
Year of Diagnosis:									
1960-1963 <sup>a</sup>	-	-	-	39	-	-	27	-	-
1970-1973 <sup>a</sup>	-	-	-	43	-	-	31	-	-
1975-1977 <sup>b</sup>	48.9	41.7	55.9	49.8	42.7	56.5	39.0	32.7	46.2
1978-1980 <sup>b</sup>	49.0	43.1	55.0	50.0	44.3	55.6	39.0	33.3	45.6
1981-1983 <sup>b</sup>	50.2	45.2	55.1	51.3	46.6	56.0	38.8	34.2	44.4
1984-1986 <sup>b</sup>	52.4	47.2	57.6	53.6	48.6	58.6	40.2	35.5	45.5
1987-1989 <sup>b</sup>	55.3	51.1	59.6	56.7	52.8	60.6	43.0	38.9	47.7
1990-1992 <sup>b</sup>	59.9	59.1	60.9	61.4	60.8	62.1	47.9	47.6	48.2
1993-1995 <sup>b</sup>	61.3	60.8	61.8	62.4	62.0	62.8	52.8	54.5	50.6
1996-1998 <sup>b</sup>	63.3	63.0	63.6	64.4	64.1	64.7	55.2	57.9	52.1
1999-2001 <sup>b</sup>	66.0	66.3	65.7	67.2	67.5	66.8	58.0	61.1	54.3
2003-2006 <sup>b</sup>	67.5	68.1	66.9	68.8	69.4	68.2	59.9	63.6	55.8
2007-2013 <sup>b</sup>	69.2 <sup>e</sup>	69.2 <sup>e</sup>	69.1 <sup>e</sup>	70.1 <sup>e</sup>	70.1 <sup>e</sup>	70.1 <sup>e</sup>	63.3 <sup>e</sup>	65.9 <sup>e</sup>	60.3 <sup>e</sup>
5-Year Period Survival (Percent) <sup>cd</sup>									
2013	67.2	66.5	67.8	67.6	66.7	68.5	61.8	63.9	59.4
5-Year Relative Survival (Percent), 2007-2013 <sup>c</sup>									
Age at Diagnosis:									
Ages <45	82.3	77.8	85.1	83.7	79.5	86.5	72.0	66.7	75.1
Ages 45-54	74.1	68.9	78.3	75.2	69.7	79.8	65.5	64.4	66.7
Ages 55-64	70.4	69.8	71.0	71.2	70.5	72.2	63.4	65.7	59.9
Ages 65-74	66.7	69.1	63.3	67.1	69.2	64.2	61.5	66.5	54.3
Ages 75+	51.3	54.2	48.5	51.8	54.1	49.6	44.1	50.6	38.9
Ages <65	73.9	70.8	76.8	74.9	71.7	78.0	65.6	65.4	65.8
Ages 65+	59.5	62.8	55.5	59.8	62.7	56.5	54.7	61.3	47.1

<sup>a</sup> Based on End Results data from a series of hospital registries and one population-based registry.  
<sup>b</sup> SEER 9 areas (San Francisco, Connecticut, Detroit, Hawaii, Iowa, New Mexico, Seattle, Utah, Atlanta).  
Based on follow-up of patients into 2014.  
<sup>c</sup> SEER 18 areas (San Francisco, Connecticut, Detroit, Hawaii, Iowa, New Mexico, Seattle, Utah, Atlanta, San Jose-Monterey, Los Angeles, Alaska Native Registry, Rural Georgia, California excluding SF/SJM/LA, Kentucky, Louisiana, New Jersey and Georgia excluding ATL/RG).  
Based on follow-up of patients into 2014.  
<sup>d</sup> Period survival provides a 2013 estimate of survival by piecing together the most recent conditional survival estimates from several cohorts. It is computed here using three year calendar blocks (2010-2012: 0-1 year survival), (2009-2011: 1-2 year survival), (2008-2010: 2-3 year survival), (2007-2009: 3-4 year survival), (2006-2008: 4-5 years survival).  
<sup>e</sup> The difference between 1975-1977 and 2007-2013 is statistically significant (p<.05).  
<sup>f</sup> The standard error is between 5 and 10 percentage points.  
<sup>g</sup> The standard error is greater than 10 percentage points.  
- Statistic could not be calculated due to fewer than 25 cases during the time period.

Table 3.8  
Cancer of the Brain and Other Nervous System (Invasive)

5-Year Relative and Period Survival (Percent) by Race, Sex, Diagnosis Year, Stage and Age

	All Races			Whites			Blacks		
	Total	Males	Females	Total	Males	Females	Total	Males	Females
5-Year Relative Survival (Percent)									
Year of Diagnosis:									
1960-1963 <sup>a</sup>	-	-	-	18	16	21	19	17	21
1970-1973 <sup>a</sup>	-	-	-	20	18	22	19	19	19
1975-1977 <sup>b</sup>	22.5	20.7	24.8	21.9	20.2	24.1	25.4	19.6	34.7 <sup>g</sup>
1978-1980 <sup>b</sup>	23.6	22.4	25.1	23.0	22.0	24.4	28.2	28.7	27.5
1981-1983 <sup>b</sup>	24.1	23.0	25.5	23.4	22.4	24.6	30.8	31.7	29.2 <sup>g</sup>
1984-1986 <sup>b</sup>	26.9	25.6	28.5	26.1	24.8	27.8	31.2	32.8	29.1
1987-1989 <sup>b</sup>	28.9	27.3	31.0	28.3	26.3	30.8	31.7	33.7	29.3
1990-1992 <sup>b</sup>	30.2	30.5	29.7	29.2	29.4	28.9	39.3	40.2	38.1
1993-1995 <sup>b</sup>	32.2	32.9	31.3	30.9	31.3	30.3	41.7	46.1	36.8
1996-1998 <sup>b</sup>	31.3	30.6	32.0	30.5	30.1	31.0	35.9	33.6	38.3
1999-2001 <sup>b</sup>	33.8	30.9	37.6	33.0	30.4	36.5	38.4	33.4	45.1
2003-2006 <sup>b</sup>	35.1	34.4	36.0	33.9	33.9	34.0	40.2	34.2	46.3
2007-2013 <sup>b</sup>	34.9 <sup>f</sup>	33.7 <sup>f</sup>	36.2 <sup>f</sup>	33.4 <sup>f</sup>	32.2 <sup>f</sup>	35.0 <sup>f</sup>	41.9 <sup>f</sup>	41.9 <sup>f</sup>	41.9
5-Year Period Survival (Percent) <sup>cd</sup>									
2013	33.6	32.7	34.8	32.4	31.5	33.5	41.2	40.0	42.6
Stage Distribution (%) 2007-2013 <sup>ce</sup>									
All Stages									
Number of cases	34,333	19,105	15,228	29,413	16,468	12,945	2,501	1,310	1,191
Percent	100%	100%	100%	100%	100%	100%	100%	100%	100%
Localized	77	78	76	77	78	76	76	78	75
Regional	15	15	16	15	15	15	15	14	16
Distant	2	2	2	2	2	2	3	3	4
Unstaged	5	4	6	5	4	6	5	5	5
5-Year Relative Survival (Percent), 2007-2013 <sup>c</sup>									
Age at Diagnosis:									
Ages <45	68.7	66.4	71.6	69.3	66.9	72.5	64.8	62.6	66.9
Ages 45-54	32.8	29.7	37.1	32.5	29.2	37.4	30.7	28.6	33.1
Ages 55-64	16.3	14.8	18.4	15.9	14.3	18.1	17.0	13.8	20.8
Ages 65-74	8.9	7.3	10.8	8.7	6.9	10.9	11.0	14.4	8.6
Ages 75+	4.9	4.7	4.9	4.4	4.5	4.2	7.7	4.2	10.0
Ages <65	45.3	42.5	49.1	44.5	41.7	48.5	47.0	43.4	50.8
Ages 65+	7.0	6.2	7.7	6.6	5.9	7.4	9.8	11.2	9.1
Stage <sup>e</sup> :									
All Stages	33.6	32.4	35.1	32.4	31.2	33.9	39.6	37.5	41.8
Localized	36.5	35.0	38.5	35.3	33.8	37.2	41.7	39.6	43.8
Regional	21.4	21.1	21.8	20.6	20.1	21.0	28.8	26.8	31.1
Distant	33.9	30.0	38.7	33.1	29.1	38.6	36.3 <sup>g</sup>	33.5 <sup>h</sup>	38.1 <sup>g</sup>
Unstaged	25.7	26.5	24.9	23.6	24.2	23.0	41.0	35.3 <sup>g</sup>	47.1 <sup>g</sup>

<sup>a</sup> Based on End Results data from a series of hospital registries and one population-based registry.

<sup>b</sup> SEER 9 areas (San Francisco, Connecticut, Detroit, Hawaii, Iowa, New Mexico, Seattle, Utah, Atlanta).

Based on follow-up of patients into 2014.

<sup>c</sup> SEER 18 areas (San Francisco, Connecticut, Detroit, Hawaii, Iowa, New Mexico, Seattle, Utah, Atlanta, San Jose-Monterey, Los Angeles, Alaska Native Registry, Rural Georgia, California excluding SF/SJM/LA, Kentucky, Louisiana, New Jersey and Georgia excluding ATL/RG).

Based on follow-up of patients into 2014.

<sup>d</sup> Period survival provides a 2013 estimate of survival by piecing together the most recent conditional survival estimates from several cohorts. It is computed here using three year calendar blocks (2010-2012: 0-1 year survival), (2009-2011: 1-2 year survival), (2008-2010: 2-3 year survival), (2007-2009: 3-4 year survival), (2006-2008: 4-5 years survival).

<sup>e</sup> Stage at diagnosis is classified using SEER Summary Stage 2000. Stage distribution percentages may not sum to 100 due to rounding.

<sup>f</sup> The difference between 1975-1977 and 2007-2013 is statistically significant ( $p < .05$ ).

<sup>g</sup> The standard error is between 5 and 10 percentage points.

<sup>h</sup> The standard error is greater than 10 percentage points.

- Statistic could not be calculated due to fewer than 25 cases during the time period.

Table 4.13  
Cancer of the Female Breast (Invasive)

5-Year Relative and Period Survival (Percent) by Race, Diagnosis Year, Stage and Age

	All Races, Females			White Females			Black Females		
	All	<50	50+	All	<50	50+	All	<50	50+
5-Year Relative Survival (Percent)									
Year of Diagnosis:									
1960-1963 <sup>a</sup>	-	-	-	63	-	-	46	-	-
1970-1973 <sup>a</sup>	-	-	-	68	-	-	51	-	-
1975-1977 <sup>b</sup>	74.8	76.5	74.3	75.6	77.8	74.9	62.2	62.4	62.0
1978-1980 <sup>b</sup>	74.4	75.5	74.1	75.1	76.1	74.9	63.4	67.1	61.5
1981-1983 <sup>b</sup>	76.1	77.4	75.7	77.1	78.5	76.7	63.4	65.1	62.6
1984-1986 <sup>b</sup>	78.9	77.8	79.3	80.0	79.5	80.2	65.1	63.9	65.8
1987-1989 <sup>b</sup>	84.0	81.4	85.0	85.1	82.7	85.9	71.1	69.6	71.9
1990-1992 <sup>b</sup>	85.2	83.4	85.9	86.5	85.1	87.0	71.5	70.2	72.3
1993-1995 <sup>b</sup>	86.4	84.3	87.1	87.6	86.2	88.1	72.7	70.4	74.1
1996-1998 <sup>b</sup>	88.2	86.6	88.8	89.4	88.3	89.7	76.2	74.0	77.6
1999-2001 <sup>b</sup>	89.7	88.1	90.3	90.8	89.9	91.1	78.9	76.9	80.1
2003-2006 <sup>b</sup>	90.2	89.9	90.4	91.7	91.7	91.7	77.9	78.5	77.7
2007-2013 <sup>b</sup>	91.1 <sup>f</sup>	91.1 <sup>f</sup>	91.1 <sup>f</sup>	92.2 <sup>f</sup>	92.3 <sup>f</sup>	92.1 <sup>f</sup>	82.7 <sup>f</sup>	83.4 <sup>f</sup>	82.4 <sup>f</sup>
5-Year Period Survival (Percent) <sup>cd</sup>									
2013	89.8	89.6	89.9	90.8	90.8	90.9	80.8	80.5	81.0
Stage Distribution (%) 2007-2013 <sup>ce</sup>									
All Stages									
Number of cases	338,602	79,376	259,226	268,724	58,666	210,058	37,618	10,658	26,960
Percent	100%	100%	100%	100%	100%	100%	100%	100%	100%
Localized	62	54	64	63	55	65	53	47	56
Regional	31	39	28	30	39	28	36	44	33
Distant	6	5	6	5	5	6	9	8	9
Unstaged	2	1	2	1	1	2	2	1	2
5-Year Relative Survival (Percent), 2007-2013 <sup>c</sup>									
Age at Diagnosis:									
Ages <45	88.1	-	-	89.5	-	-	78.3	-	-
Ages 45-54	90.6	-	-	91.7	-	-	82.1	-	-
Ages 55-64	90.1	-	-	91.2	-	-	81.7	-	-
Ages 65-74	91.4	-	-	92.2	-	-	83.6	-	-
Ages 75+	87.1	-	-	88.3	-	-	73.8	-	-
Ages <65	89.9	-	-	91.0	-	-	81.0	-	-
Ages 65+	89.5	-	-	90.5	-	-	79.7	-	-
Stage <sup>e</sup> :									
All Stages	89.7	89.5	89.8	90.8	90.8	90.8	80.6	80.4	80.7
Localized	98.9	97.0	99.4	99.4	97.4	99.9	94.8	93.5	95.3
Regional	85.2	86.6	84.6	86.4	88.1	85.8	76.1	76.7	75.8
Distant	26.9	37.1	24.1	27.9	39.8	25.0	19.7	25.8	17.5
Unstaged	53.2	75.3	48.0	50.8	76.0	45.8	48.5	63.6	43.4
<i>In Situ</i> <sup>j</sup>	100.0	100.0	100.0	100.0	100.0	100.0	100.0	99.7	100.0

<sup>a</sup> Based on End Results data from a series of hospital registries and one population-based registry.

<sup>b</sup> SEER 9 areas (San Francisco, Connecticut, Detroit, Hawaii, Iowa, New Mexico, Seattle, Utah, Atlanta).

Based on follow-up of patients into 2014.

<sup>c</sup> SEER 18 areas (San Francisco, Connecticut, Detroit, Hawaii, Iowa, New Mexico, Seattle, Utah, Atlanta, San Jose-Monterey, Los Angeles, Alaska Native Registry, Rural Georgia, California excluding SF/SJM/LA, Kentucky, Louisiana, New Jersey and Georgia excluding ATL/RG).

Based on follow-up of patients into 2014.

<sup>d</sup> Period survival provides a 2013 estimate of survival by piecing together the most recent conditional survival estimates

from several cohorts. It is computed here using three year calendar blocks (2010-2012: 0-1 year survival), (2009-2011: 1-2 year survival), (2008-2010: 2-3 year survival), (2007-2009: 3-4 year survival), (2006-2008: 4-5 years survival).

<sup>e</sup> Stage at diagnosis is classified using SEER Summary Stage 2000. Stage distribution percentages may not sum to 100 due to rounding.

<sup>f</sup> The difference between 1975-1977 and 2007-2013 is statistically significant ( $p < .05$ ).

<sup>g</sup> The standard error is between 5 and 10 percentage points.

<sup>h</sup> The standard error is greater than 10 percentage points.

<sup>j</sup> *In situ* cases are not included in the All Stages group.

- Statistic could not be calculated due to fewer than 25 cases during the time period.

Table 5.8  
Cancer of the Cervix Uteri (Invasive)

5-Year Relative and Period Survival (Percent) by Race, Diagnosis Year, Stage and Age

	All Races, Females			White Females			Black Females		
	All	<50	50+	All	<50	50+	All	<50	50+
5-Year Relative Survival (Percent)									
Year of Diagnosis:									
1960-1963 <sup>a</sup>	-	-	-	58	-	-	47	-	-
1970-1973 <sup>a</sup>	-	-	-	64	-	-	61	-	-
1975-1977 <sup>b</sup>	69.1	82.5	57.9	69.7	83.9	58.1	64.6	75.6	55.1
1978-1980 <sup>b</sup>	67.4	78.4	57.8	68.1	79.8	58.2	61.0	70.6	52.0
1981-1983 <sup>b</sup>	66.9	79.6	54.6	67.8	80.8	54.9	59.2	73.6	46.2
1984-1986 <sup>b</sup>	67.2	77.8	55.3	68.8	79.5	56.3	57.9	68.0	48.4
1987-1989 <sup>b</sup>	70.1	79.6	58.0	72.5	82.6	58.5	57.0	62.7	52.0
1990-1992 <sup>b</sup>	69.6	79.1	56.8	70.9	81.4	56.3	58.1	63.8	51.0
1993-1995 <sup>b</sup>	72.6	81.8	59.7	74.2	83.5	60.1	62.8	70.7	53.3
1996-1998 <sup>b</sup>	72.6	80.9	60.3	73.6	82.6	59.2	64.8	67.8	61.0
1999-2001 <sup>b</sup>	72.4	83.9	56.3	73.4	85.7	55.1	66.0	73.9	56.6
2003-2006 <sup>b</sup>	69.5	79.2	56.4	70.8	81.4	55.9	62.6	70.4	53.3
2007-2013 <sup>b</sup>	68.8	79.2 <sup>f</sup>	55.9	70.8	82.0	56.2	58.3 <sup>f</sup>	65.4 <sup>f</sup>	51.1
5-Year Period Survival (Percent) <sup>cd</sup>									
2013	66.1	75.5	55.4	67.8	77.3	56.5	54.6	64.7	44.9
Stage Distribution (%) 2007-2013 <sup>ce</sup>									
All Stages									
Number of cases	21,883	11,742	10,141	16,314	9,015	7,299	3,090	1,482	1,608
Percent	100%	100%	100%	100%	100%	100%	100%	100%	100%
Localized	46	58	31	47	60	33	37	47	27
Regional	36	30	43	35	29	43	41	37	45
Distant	14	9	20	14	8	20	17	12	22
Unstaged	4	4	5	4	3	5	5	4	6
5-Year Relative Survival (Percent), 2007-2013 <sup>c</sup>									
Age at Diagnosis:									
Ages <45	78.9	-	-	80.6	-	-	66.1	-	-
Ages 45-54	66.3	-	-	67.7	-	-	55.7	-	-
Ages 55-64	59.2	-	-	59.9	-	-	51.8	-	-
Ages 65-74	55.4	-	-	54.6	-	-	52.2	-	-
Ages 75+	37.0	-	-	37.5	-	-	32.9	-	-
Ages <65	71.1	-	-	72.7	-	-	59.4	-	-
Ages 65+	47.9	-	-	47.8	-	-	43.4	-	-
Stage <sup>e</sup> :									
All Stages	67.1	76.6	56.0	68.7	78.2	56.7	56.2	64.2	48.6
Localized	91.5	93.3	87.5	91.8	93.6	87.7	86.6	89.0	82.7
Regional	57.1	61.5	53.6	58.3	63.7	53.7	48.4	49.7	47.4
Distant	17.3	19.7	16.0	18.7	21.9	16.9	11.9	10.9	12.8
Unstaged	52.2	72.6	35.7	52.6	72.0	35.2	44.8	66.1 <sup>g</sup>	31.2 <sup>g</sup>

<sup>a</sup> Based on End Results data from a series of hospital registries and one population-based registry.

<sup>b</sup> SEER 9 areas (San Francisco, Connecticut, Detroit, Hawaii, Iowa, New Mexico, Seattle, Utah, Atlanta).  
Based on follow-up of patients into 2014.

<sup>c</sup> SEER 18 areas (San Francisco, Connecticut, Detroit, Hawaii, Iowa, New Mexico, Seattle, Utah, Atlanta, San Jose-Monterey, Los Angeles, Alaska Native Registry, Rural Georgia, California excluding SF/SJM/LA, Kentucky, Louisiana, New Jersey and Georgia excluding ATL/RG).  
Based on follow-up of patients into 2014.

<sup>d</sup> Period survival provides a 2013 estimate of survival by piecing together the most recent conditional survival estimates from several cohorts. It is computed here using three year calendar blocks (2010-2012: 0-1 year survival), (2009-2011: 1-2 year survival), (2008-2010: 2-3 year survival), (2007-2009: 3-4 year survival), (2006-2008: 4-5 years survival).

<sup>e</sup> Stage at diagnosis is classified using SEER Summary Stage 2000. Stage distribution percentages may not sum to 100 due to rounding.

<sup>f</sup> The difference between 1975-1977 and 2007-2013 is statistically significant ( $p < .05$ ).

<sup>g</sup> The standard error is between 5 and 10 percentage points.

<sup>h</sup> The standard error is greater than 10 percentage points.

- Statistic could not be calculated due to fewer than 25 cases during the time period.

Table 6.12  
Cancer of the Colon and Rectum (Invasive)

5-Year Relative and Period Survival (Percent) by Race, Sex, Diagnosis Year, Stage and Age

	All Races			Whites			Blacks		
	Total	Males	Females	Total	Males	Females	Total	Males	Females
5-Year Relative Survival (Percent)									
Year of Diagnosis:									
1960-1963 <sup>a</sup>	-	-	-	-	-	-	-	-	-
1970-1973 <sup>a</sup>	-	-	-	-	-	-	-	-	-
1975-1977 <sup>b</sup>	49.8	49.0	50.6	50.1	49.3	50.7	44.6	43.3	45.9
1978-1980 <sup>b</sup>	51.2	50.2	52.2	51.6	50.6	52.5	45.4	43.4	46.9
1981-1983 <sup>b</sup>	54.0	53.8	54.2	54.4	54.4	54.3	46.5	42.9	49.5
1984-1986 <sup>b</sup>	57.7	57.7	57.6	58.4	58.5	58.3	48.4	47.5	49.0
1987-1989 <sup>b</sup>	59.6	59.6	59.3	60.0	60.5	59.5	52.3	49.9	54.5
1990-1992 <sup>b</sup>	61.2	61.0	61.3	61.9	61.7	62.1	52.9	54.4	51.5
1993-1995 <sup>b</sup>	59.9	59.8	60.0	60.5	60.3	60.6	51.7	51.3	52.1
1996-1998 <sup>b</sup>	62.4	62.4	62.5	63.0	62.8	63.2	53.9	55.1	52.9
1999-2001 <sup>b</sup>	65.1	66.1	64.1	66.5	67.4	65.7	54.1	55.4	53.0
2003-2006 <sup>b</sup>	66.0	65.9	66.0	67.0	67.4	66.6	57.0	54.5	59.1
2007-2013 <sup>b</sup>	66.3 <sup>f</sup>	66.1 <sup>f</sup>	66.6 <sup>f</sup>	67.1 <sup>f</sup>	67.0 <sup>f</sup>	67.3 <sup>f</sup>	58.8 <sup>f</sup>	57.5 <sup>f</sup>	60.1 <sup>f</sup>
5-Year Period Survival (Percent) <sup>cd</sup>									
2013	64.6	64.0	65.2	65.2	64.7	65.7	57.9	55.7	59.9
Stage Distribution (%) 2007-2013 <sup>ce</sup>									
All Stages									
Number of cases	208,289	107,713	100,576	161,464	84,055	77,409	25,682	12,499	13,183
Percent	100%	100%	100%	100%	100%	100%	100%	100%	100%
Localized	39	39	39	39	39	39	38	37	38
Regional	35	35	35	36	36	36	32	32	32
Distant	21	21	21	21	21	20	25	26	24
Unstaged	4	4	5	4	4	5	5	4	5
5-Year Relative Survival (Percent), 2007-2013 <sup>c</sup>									
Age at Diagnosis:									
Ages <45	68.5	66.2	70.9	70.1	67.8	72.6	59.7	55.0	63.8
Ages 45-54	70.8	69.2	72.9	71.8	70.2	73.8	63.2	59.5	67.2
Ages 55-64	67.8	67.0	69.0	68.6	67.7	69.8	60.6	59.0	62.4
Ages 65-74	67.4	66.4	68.6	67.9	67.2	68.7	59.4	55.3	63.5
Ages 75+	56.5	55.9	56.9	57.7	57.0	58.3	46.4	44.6	47.3
Ages <65	69.0	67.7	70.7	69.9	68.6	71.7	61.5	58.7	64.5
Ages 65+	61.3	61.3	61.3	62.0	62.1	62.0	53.3	51.1	54.9
Stage <sup>e</sup> :									
All Stages	64.9	64.5	65.2	65.5	65.2	65.8	57.9	55.7	59.9
Localized	89.9	89.1	90.7	90.2	89.3	91.2	86.2	84.2	88.0
Regional	71.3	71.1	71.4	72.0	71.9	72.0	65.0	62.7	67.1
Distant	13.9	12.9	14.9	14.4	13.5	15.5	10.2	8.9	11.4
Unstaged	35.4	38.5	32.6	31.8	35.1	28.9	39.8	40.9	38.8

<sup>a</sup> Based on End Results data from a series of hospital registries and one population-based registry.

<sup>b</sup> SEER 9 areas (San Francisco, Connecticut, Detroit, Hawaii, Iowa, New Mexico, Seattle, Utah, Atlanta).

Based on follow-up of patients into 2014.

<sup>c</sup> SEER 18 areas (San Francisco, Connecticut, Detroit, Hawaii, Iowa, New Mexico, Seattle, Utah, Atlanta, San Jose-Monterey, Los Angeles, Alaska Native Registry, Rural Georgia, California excluding SF/SJM/LA, Kentucky, Louisiana, New Jersey and Georgia excluding ATL/RG).

Based on follow-up of patients into 2014.

<sup>d</sup> Period survival provides a 2013 estimate of survival by piecing together the most recent conditional survival estimates from several cohorts. It is computed here using three year calendar blocks (2010-2012: 0-1 year survival), (2009-2011: 1-2 year survival), (2008-2010: 2-3 year survival), (2007-2009: 3-4 year survival), (2006-2008: 4-5 years survival).

<sup>e</sup> Stage at diagnosis is classified using SEER Summary Stage 2000. Stage distribution percentages may not sum to 100 due to rounding.

<sup>f</sup> The difference between 1975-1977 and 2007-2013 is statistically significant ( $p < .05$ ).

<sup>g</sup> The standard error is between 5 and 10 percentage points.

<sup>h</sup> The standard error is greater than 10 percentage points.

- Statistic could not be calculated due to fewer than 25 cases during the time period.

Table 6.13  
Cancer of the Colon (Invasive)

5-Year Relative and Period Survival (Percent) by Race, Sex, Diagnosis Year, Stage and Age

	All Races			Whites			Blacks		
	Total	Males	Females	Total	Males	Females	Total	Males	Females
5-Year Relative Survival (Percent)									
Year of Diagnosis:									
1960-1963 <sup>a</sup>	-	-	-	43	42	44	34	32	35
1970-1973 <sup>a</sup>	-	-	-	49	47	50	37	36	38
1975-1977 <sup>b</sup>	50.6	50.1	51.1	50.9	50.5	51.3	44.7	44.0	45.3
1978-1980 <sup>b</sup>	52.3	51.3	53.2	52.4	51.3	53.4	48.9	47.5	49.8
1981-1983 <sup>b</sup>	55.2	55.6	54.8	55.4	56.2	54.8	48.5	44.7	51.5
1984-1986 <sup>b</sup>	58.3	58.8	57.8	59.0	59.6	58.5	49.1	48.9	49.3
1987-1989 <sup>b</sup>	60.2	60.7	60.7	60.7	61.4	59.9	52.4	50.7	53.8
1990-1992 <sup>b</sup>	62.0	62.3	61.7	62.8	63.1	62.4	53.4	54.6	52.3
1993-1995 <sup>b</sup>	59.8	60.2	59.5	60.5	60.7	60.2	51.1	51.2	51.0
1996-1998 <sup>b</sup>	62.1	62.4	61.9	62.9	62.9	62.8	53.6	55.8	51.8
1999-2001 <sup>b</sup>	64.9	66.1	63.7	66.6	67.9	65.5	52.5	53.7	51.5
2003-2006 <sup>b</sup>	65.1	65.0	65.2	66.2	66.6	66.0	55.6	53.4	57.4
2007-2013 <sup>b</sup>	65.4 <sup>f</sup>	65.4 <sup>f</sup>	65.4 <sup>f</sup>	66.5 <sup>f</sup>	66.4 <sup>f</sup>	66.7 <sup>f</sup>	56.2 <sup>f</sup>	56.7 <sup>f</sup>	55.7 <sup>f</sup>
5-Year Period Survival (Percent) <sup>cd</sup>									
2013	63.7	63.3	64.0	64.6	64.3	64.9	56.3	55.0	57.4
Stage Distribution (%) 2007-2013 <sup>ce</sup>									
All Stages									
Number of cases	144,817	71,394	73,423	112,587	55,904	56,683	18,732	8,784	9,948
Percent	100%	100%	100%	100%	100%	100%	100%	100%	100%
Localized	38	38	37	38	39	38	34	35	34
Regional	36	36	37	36	36	37	34	34	35
Distant	22	22	22	22	22	21	27	28	27
Unstaged	4	4	4	4	3	4	4	4	4
5-Year Relative Survival (Percent), 2007-2013 <sup>c</sup>									
Age at Diagnosis:									
Ages <45	67.2	65.2	69.1	69.6	67.4	71.8	57.1	53.5	59.9
Ages 45-54	68.5	67.5	69.5	70.0	69.0	71.3	59.5	57.1	61.7
Ages 55-64	66.6	66.5	66.8	67.7	67.4	68.0	59.0	58.8	59.1
Ages 65-74	67.6	66.9	68.3	68.2	67.8	68.8	59.5	56.5	62.2
Ages 75+	57.8	57.0	58.3	59.2	58.3	59.9	47.5	46.0	48.3
Ages <65	67.3	66.7	68.1	68.7	68.0	69.7	58.9	57.7	60.2
Ages 65+	61.8	61.8	61.9	62.8	62.7	62.8	53.7	52.2	54.7
Stage <sup>e</sup> :									
All Stages	64.1	64.0	64.1	65.0	65.0	65.1	56.4	55.3	57.3
Localized	90.7	90.0	91.5	91.3	90.4	92.3	86.3	85.1	87.3
Regional	71.7	71.7	71.7	72.3	72.3	72.2	66.7	65.6	67.5
Distant	13.6	12.8	14.5	14.3	13.5	15.1	9.5	8.2	10.7
Unstaged	27.0	31.4	23.5	24.3	28.9	20.6	31.0	35.4	27.7

<sup>a</sup> Based on End Results data from a series of hospital registries and one population-based registry.

<sup>b</sup> SEER 9 areas (San Francisco, Connecticut, Detroit, Hawaii, Iowa, New Mexico, Seattle, Utah, Atlanta).

Based on follow-up of patients into 2014.

<sup>c</sup> SEER 18 areas (San Francisco, Connecticut, Detroit, Hawaii, Iowa, New Mexico, Seattle, Utah, Atlanta, San Jose-Monterey, Los Angeles, Alaska Native Registry, Rural Georgia, California excluding SF/SJM/LA, Kentucky, Louisiana, New Jersey and Georgia excluding ATL/RG).

Based on follow-up of patients into 2014.

<sup>d</sup> Period survival provides a 2013 estimate of survival by piecing together the most recent conditional survival estimates from several cohorts. It is computed here using three year calendar blocks (2010-2012: 0-1 year survival), (2009-2011: 1-2 year survival), (2008-2010: 2-3 year survival), (2007-2009: 3-4 year survival), (2006-2008: 4-5 years survival).

<sup>e</sup> Stage at diagnosis is classified using SEER Summary Stage 2000. Stage distribution percentages may not sum to 100 due to rounding.

<sup>f</sup> The difference between 1975-1977 and 2007-2013 is statistically significant (p<.05).

<sup>g</sup> The standard error is between 5 and 10 percentage points.

<sup>h</sup> The standard error is greater than 10 percentage points.

- Statistic could not be calculated due to fewer than 25 cases during the time period.

Table 6.14  
Cancer of the Rectum (Invasive)

5-Year Relative and Period Survival (Percent) by Race, Sex, Diagnosis Year, Stage and Age

	All Races			Whites			Blacks		
	Total	Males	Females	Total	Males	Females	Total	Males	Females
5-Year Relative Survival (Percent)									
Year of Diagnosis:									
1960-1963 <sup>a</sup>	-	-	-	38	36	41	27	28	27
1970-1973 <sup>a</sup>	-	-	-	45	43	48	30	20	40
1975-1977 <sup>b</sup>	48.1	47.0	49.5	48.3	47.3	49.4	44.4	41.4	46.8
1978-1980 <sup>b</sup>	48.9	48.4	49.5	49.7	49.3	50.1	34.6	33.5	35.5
1981-1983 <sup>b</sup>	51.4	50.2	52.8	52.0	51.0	53.2	40.3	38.1	42.5
1984-1986 <sup>b</sup>	56.3	55.6	57.1	57.0	56.4	57.7	45.9	43.4	48.2
1987-1989 <sup>b</sup>	58.1	57.9	58.4	58.7	58.9	58.4	52.3	47.7	56.9
1990-1992 <sup>b</sup>	59.2	58.4	60.2	59.9	59.0	61.0	51.2	53.7	48.5
1993-1995 <sup>b</sup>	60.1	59.0	61.5	60.6	59.5	61.9	53.8	51.4	56.4
1996-1998 <sup>b</sup>	63.2	62.4	64.2	63.5	62.8	64.4	55.0	53.6	56.2
1999-2001 <sup>b</sup>	65.8	66.1	65.4	66.5	66.5	66.4	59.2	60.1	58.2
2003-2006 <sup>b</sup>	68.1	67.8	68.4	68.9	69.2	68.4	61.1	57.6	64.4
2007-2013 <sup>b</sup>	68.6 <sup>f</sup>	67.5 <sup>f</sup>	70.0 <sup>f</sup>	68.5 <sup>f</sup>	68.1 <sup>f</sup>	69.0 <sup>f</sup>	65.5 <sup>f</sup>	59.1 <sup>f</sup>	72.6 <sup>f</sup>
5-Year Period Survival (Percent) <sup>cd</sup>									
2013	66.6	65.3	68.3	66.5	65.5	67.8	62.2	57.5	67.6
Stage Distribution (%) 2007-2013 <sup>ce</sup>									
All Stages									
Number of cases	63,472	36,319	27,153	48,877	28,151	20,726	6,950	3,715	3,235
Percent	100%	100%	100%	100%	100%	100%	100%	100%	100%
Localized	43	42	44	42	41	43	46	43	50
Regional	33	34	32	35	36	34	27	29	24
Distant	18	19	17	19	19	18	20	22	18
Unstaged	5	5	6	5	4	6	7	6	7
5-Year Relative Survival (Percent), 2007-2013 <sup>c</sup>									
Age at Diagnosis:									
Ages <45	70.4	67.7	73.7	70.9	68.4	73.8	64.6	57.3	72.5
Ages 45-54	74.3	71.5	78.1	74.3	71.8	77.7	70.3	63.3	78.9
Ages 55-64	70.0	67.8	73.6	70.2	68.3	73.4	64.6	59.3	71.8
Ages 65-74	66.9	65.3	69.4	67.0	65.8	68.7	59.3	51.4	68.5
Ages 75+	51.7	52.5	50.8	52.1	52.8	51.3	41.4	39.3	42.7
Ages <65	71.7	69.2	75.4	71.8	69.6	75.2	67.0	60.7	74.9
Ages 65+	59.7	60.0	59.3	59.7	60.3	59.0	51.9	47.3	56.0
Stage <sup>e</sup> :									
All Stages	66.7	65.5	68.2	66.5	65.8	67.6	62.0	56.7	67.9
Localized	88.2	87.5	89.0	87.9	87.3	88.5	86.0	82.5	89.3
Regional	70.3	70.0	70.6	71.2	71.3	71.1	59.3	54.8	65.1
Distant	14.6	13.2	16.5	14.9	13.5	16.8	12.6	11.2	14.6
Unstaged	49.5	48.7	50.4	45.5	44.7	46.4	53.2	47.8	57.9

<sup>a</sup> Based on End Results data from a series of hospital registries and one population-based registry.

<sup>b</sup> SEER 9 areas (San Francisco, Connecticut, Detroit, Hawaii, Iowa, New Mexico, Seattle, Utah, Atlanta).

Based on follow-up of patients into 2014.

<sup>c</sup> SEER 18 areas (San Francisco, Connecticut, Detroit, Hawaii, Iowa, New Mexico, Seattle, Utah, Atlanta, San Jose-Monterey, Los Angeles, Alaska Native Registry, Rural Georgia, California excluding SF/SJM/LA, Kentucky, Louisiana, New Jersey and Georgia excluding ATL/RG).

Based on follow-up of patients into 2014.

<sup>d</sup> Period survival provides a 2013 estimate of survival by piecing together the most recent conditional survival estimates from several cohorts. It is computed here using three year calendar blocks (2010-2012: 0-1 year survival), (2009-2011: 1-2 year survival), (2008-2010: 2-3 year survival), (2007-2009: 3-4 year survival), (2006-2008: 4-5 years survival).

<sup>e</sup> Stage at diagnosis is classified using SEER Summary Stage 2000. Stage distribution percentages may not sum to 100 due to rounding.

<sup>f</sup> The difference between 1975-1977 and 2007-2013 is statistically significant ( $p < .05$ ).

<sup>g</sup> The standard error is between 5 and 10 percentage points.

<sup>h</sup> The standard error is greater than 10 percentage points.

- Statistic could not be calculated due to fewer than 25 cases during the time period.

Table 7.8  
Cancer of the Corpus and Uterus, NOS (Invasive)

5-Year Relative and Period Survival (Percent) by Race, Diagnosis Year, Stage and Age

	All Races, Females			White Females			Black Females		
	All	<50	50+	All	<50	50+	All	<50	50+
5-Year Relative Survival (Percent)									
Year of Diagnosis:									
1960-1963 <sup>a</sup>	-	-	-	73	-	-	31	-	-
1970-1973 <sup>a</sup>	-	-	-	81	-	-	44	-	-
1975-1977 <sup>b</sup>	86.9	92.7	86.2	88.0	93.3	87.4	60.0	84.4 <sup>g</sup>	55.4
1978-1980 <sup>b</sup>	82.5	91.7	81.3	83.7	93.1	82.6	54.9	82.3 <sup>g</sup>	49.5
1981-1983 <sup>b</sup>	80.7	91.2	79.4	82.2	92.3	81.1	50.7	82.8 <sup>g</sup>	45.6
1984-1986 <sup>b</sup>	82.5	93.6	81.1	84.0	93.9	82.8	56.2	83.5 <sup>g</sup>	52.7
1987-1989 <sup>b</sup>	82.3	89.8	81.2	83.9	90.9	83.0	56.7	82.8 <sup>g</sup>	52.9
1990-1992 <sup>b</sup>	83.6	90.1	82.6	85.7	92.3	84.8	54.0	72.9 <sup>g</sup>	50.2
1993-1995 <sup>b</sup>	83.2	90.0	82.0	84.9	91.5	83.8	58.5	81.7	53.9
1996-1998 <sup>b</sup>	83.5	90.1	82.3	85.1	91.3	84.2	61.4	81.9	57.0
1999-2001 <sup>b</sup>	84.2	88.8	83.3	85.9	89.9	85.2	61.4	70.9	58.8
2003-2006 <sup>b</sup>	83.3	89.6	82.1	85.5	91.8	84.5	61.3	75.2	57.8
2007-2013 <sup>b</sup>	82.8 <sup>f</sup>	88.1 <sup>f</sup>	82.0 <sup>f</sup>	85.3 <sup>f</sup>	89.4 <sup>f</sup>	84.7 <sup>f</sup>	64.7 <sup>f</sup>	80.9	62.1 <sup>f</sup>
5-Year Period Survival (Percent) <sup>cd</sup>									
2013	81.4	87.9	80.4	83.9	89.2	83.2	60.6	77.0	58.0
Stage Distribution (%) 2007-2013 <sup>ce</sup>									
All Stages									
Number of cases	74,181	10,604	63,577	59,426	7,869	51,557	7,619	1,018	6,601
Percent	100%	100%	100%	100%	100%	100%	100%	100%	100%
Localized	67	71	66	69	72	68	53	64	52
Regional	21	18	22	20	17	21	25	18	26
Distant	9	8	9	8	7	8	16	13	17
Unstaged	4	4	3	3	4	3	5	5	5
5-Year Relative Survival (Percent), 2007-2013 <sup>c</sup>									
Age at Diagnosis:									
Ages <45	89.0	-	-	90.0	-	-	79.6	-	-
Ages 45-54	87.2	-	-	88.8	-	-	71.5	-	-
Ages 55-64	84.3	-	-	86.7	-	-	64.9	-	-
Ages 65-74	77.6	-	-	81.0	-	-	56.3	-	-
Ages 75+	67.8	-	-	71.3	-	-	40.1	-	-
Ages <65	85.8	-	-	87.8	-	-	68.7	-	-
Ages 65+	74.0	-	-	77.3	-	-	51.3	-	-
Stage <sup>e</sup> :									
All Stages	81.3	87.9	80.2	83.7	89.0	82.9	61.6	78.5	58.9
Localized	95.3	96.1	95.1	96.3	96.7	96.2	85.9	90.7	84.9
Regional	68.5	81.4	66.7	71.3	82.5	69.8	48.4	72.0	46.0
Distant	16.2	27.2	14.5	17.4	28.1	15.8	8.8	23.4	7.2
Unstaged	50.3	88.6	42.6	49.7	89.0	42.7	40.1	87.7 <sup>g</sup>	32.5

<sup>a</sup> Based on End Results data from a series of hospital registries and one population-based registry.

<sup>b</sup> SEER 9 areas (San Francisco, Connecticut, Detroit, Hawaii, Iowa, New Mexico, Seattle, Utah, Atlanta).

Based on follow-up of patients into 2014.

<sup>c</sup> SEER 18 areas (San Francisco, Connecticut, Detroit, Hawaii, Iowa, New Mexico, Seattle, Utah, Atlanta, San Jose-Monterey, Los Angeles, Alaska Native Registry, Rural Georgia, California excluding SF/SJM/LA, Kentucky, Louisiana, New Jersey and Georgia excluding ATL/RG).

Based on follow-up of patients into 2014.

<sup>d</sup> Period survival provides a 2013 estimate of survival by piecing together the most recent conditional survival estimates from several cohorts. It is computed here using three year calendar blocks (2010-2012: 0-1 year survival), (2009-2011: 1-2 year survival), (2008-2010: 2-3 year survival), (2007-2009: 3-4 year survival), (2006-2008: 4-5 years survival).

<sup>e</sup> Stage at diagnosis is classified using SEER Summary Stage 2000. Stage distribution percentages may not sum to 100 due to rounding.

<sup>f</sup> The difference between 1975-1977 and 2007-2013 is statistically significant ( $p < .05$ ).

<sup>g</sup> The standard error is between 5 and 10 percentage points.

<sup>h</sup> The standard error is greater than 10 percentage points.

- Statistic could not be calculated due to fewer than 25 cases during the time period.



Table 8.8  
Cancer of the Esophagus (Invasive)

5-Year Relative and Period Survival (Percent) by Race, Sex, Diagnosis Year, Stage and Age

	All Races			Whites			Blacks		
	Total	Males	Females	Total	Males	Females	Total	Males	Females
5-Year Relative Survival (Percent)									
Year of Diagnosis:									
1960-1963 <sup>a</sup>	-	-	-	4	4	6	1	0	2
1970-1973 <sup>a</sup>	-	-	-	4	4	4	4	4	3
1975-1977 <sup>b</sup>	5.0	4.0	7.5	5.5	4.8	7.0	3.5	2.0	7.7
1978-1980 <sup>b</sup>	5.0	4.8	5.6	5.3	5.3	5.2	4.3	3.4	6.8
1981-1983 <sup>b</sup>	6.6	6.0	8.2	7.3	6.5	9.0	4.3	3.7	6.5
1984-1986 <sup>b</sup>	9.5	8.4	12.1	10.2	9.0	13.0	8.7	8.2	9.9
1987-1989 <sup>b</sup>	9.4	9.4	9.5	10.5	11.0	9.2	6.6	5.3	10.2
1990-1992 <sup>b</sup>	12.2	11.7	13.4	12.9	12.2	14.8	9.4	9.7	8.4
1993-1995 <sup>b</sup>	12.1	12.2	11.7	13.4	13.6	12.7	7.6	7.8	6.9
1996-1998 <sup>b</sup>	13.4	13.0	14.4	14.1	13.9	14.7	10.2	8.5	13.6
1999-2001 <sup>b</sup>	18.1	17.6	19.5	18.9	18.6	19.7	12.5	10.6	16.3
2003-2006 <sup>b</sup>	18.7	18.7	18.9	19.9	20.0	19.4	13.2	11.3	16.6
2007-2013 <sup>b</sup>	21.0 <sup>f</sup>	20.6 <sup>f</sup>	22.3 <sup>f</sup>	22.3 <sup>f</sup>	22.0 <sup>f</sup>	23.4 <sup>f</sup>	11.7 <sup>f</sup>	10.3 <sup>f</sup>	13.8 <sup>f</sup>
5-Year Period Survival (Percent) <sup>cd</sup>									
2013	19.7	19.2	21.6	20.8	20.4	22.5	11.6	9.3	16.0
Stage Distribution (%) 2007-2013 <sup>ce</sup>									
All Stages									
Number of cases	21,130	16,743	4,387	17,717	14,312	3,405	2,252	1,553	699
Percent	100%	100%	100%	100%	100%	100%	100%	100%	100%
Localized	20	19	22	20	20	22	17	16	20
Regional	31	31	30	31	31	30	32	32	32
Distant	39	40	33	39	40	33	40	42	35
Unstaged	10	9	15	10	9	15	11	10	12
5-Year Relative Survival (Percent), 2007-2013 <sup>c</sup>									
Age at Diagnosis:									
Ages <45	19.0	20.1	9.4 <sup>g</sup>	18.7	20.1	6.3 <sup>g</sup>	15.3 <sup>g</sup>	14.0 <sup>g</sup>	14.1 <sup>h</sup>
Ages 45-54	20.3	19.9	22.2	21.8	21.1	26.4	11.1	11.4	10.4
Ages 55-64	20.7	19.9	25.2	22.3	21.6	27.1	11.8	9.4	18.5
Ages 65-74	22.0	21.5	24.0	22.9	22.5	25.1	13.1	12.2	15.1
Ages 75+	11.8	12.0	11.3	12.0	12.4	11.2	9.6	8.7	9.8
Ages <65	20.5	19.9	23.6	22.0	21.3	25.8	11.7	10.2	15.7
Ages 65+	17.2	17.5	16.5	17.8	18.1	16.6	11.8	11.1	12.8
Stage <sup>e</sup> :									
All Stages	18.8	18.7	19.2	19.7	19.7	19.9	11.8	10.6	14.4
Localized	42.9	45.4	34.2	45.3	47.8	35.9	23.2	23.1	22.8
Regional	23.4	22.9	25.6	24.1	23.6	26.6	16.9	16.4	17.7
Distant	4.6	4.3	6.6	4.9	4.5	6.7	3.1	1.5	6.7
Unstaged	12.4	12.6	11.8	12.0	12.5	10.4	10.4	9.1	13.3

<sup>a</sup> Based on End Results data from a series of hospital registries and one population-based registry.

<sup>b</sup> SEER 9 areas (San Francisco, Connecticut, Detroit, Hawaii, Iowa, New Mexico, Seattle, Utah, Atlanta).

Based on follow-up of patients into 2014.

<sup>c</sup> SEER 18 areas (San Francisco, Connecticut, Detroit, Hawaii, Iowa, New Mexico, Seattle, Utah, Atlanta, San Jose-Monterey, Los Angeles, Alaska Native Registry, Rural Georgia, California excluding SF/SJM/LA, Kentucky, Louisiana, New Jersey and Georgia excluding ATL/RG).

Based on follow-up of patients into 2014.

<sup>d</sup> Period survival provides a 2013 estimate of survival by piecing together the most recent conditional survival estimates from several cohorts. It is computed here using three year calendar blocks (2010-2012: 0-1 year survival), (2009-2011: 1-2 year survival), (2008-2010: 2-3 year survival), (2007-2009: 3-4 year survival), (2006-2008: 4-5 years survival).

<sup>e</sup> Stage at diagnosis is classified using SEER Summary Stage 2000. Stage distribution percentages may not sum to 100 due to rounding.

<sup>f</sup> The difference between 1975-1977 and 2007-2013 is statistically significant ( $p < .05$ ).

<sup>g</sup> The standard error is between 5 and 10 percentage points.

<sup>h</sup> The standard error is greater than 10 percentage points.

- Statistic could not be calculated due to fewer than 25 cases during the time period.

Table 9.8  
Hodgkin Lymphoma

## 5-Year Relative and Period Survival (Percent) by Race, Sex, Diagnosis Year and Age

	All Races			Whites			Blacks		
	Total	Males	Females	Total	Males	Females	Total	Males	Females
5-Year Relative Survival (Percent)									
Year of Diagnosis:									
1960-1963 <sup>a</sup>	-	-	-	40	34	48	-	-	-
1970-1973 <sup>a</sup>	-	-	-	67	66	69	-	-	-
1975-1977 <sup>b</sup>	71.8	69.9	74.3	72.1	70.1	74.6	70.1	68.5 <sup>g</sup>	73.3 <sup>g</sup>
1978-1980 <sup>b</sup>	71.7	70.3	73.5	71.8	69.8	74.3	70.6	74.7 <sup>g</sup>	63.1 <sup>g</sup>
1981-1983 <sup>b</sup>	74.2	72.9	75.8	74.6	73.7	75.6	71.8	69.6 <sup>g</sup>	75.9 <sup>g</sup>
1984-1986 <sup>b</sup>	78.3	76.5	80.6	78.8	76.9	81.2	74.9	76.0 <sup>g</sup>	72.1 <sup>g</sup>
1987-1989 <sup>b</sup>	79.2	76.6	82.5	79.7	76.8	83.3	72.3	70.9 <sup>g</sup>	74.0 <sup>g</sup>
1990-1992 <sup>b</sup>	81.7	79.3	84.7	82.9	81.1	85.0	74.2	64.9	84.3
1993-1995 <sup>b</sup>	81.7	79.2	84.6	82.2	80.0	84.7	78.3	74.0	83.0
1996-1998 <sup>b</sup>	85.1	84.4	85.9	85.7	84.4	87.3	81.1	84.2	77.7
1999-2001 <sup>b</sup>	85.1	82.8	87.9	85.7	84.0	87.8	81.6	75.3	89.8
2003-2006 <sup>b</sup>	87.1	86.2	88.1	88.1	87.6	88.7	82.5	77.9	86.8
2007-2013 <sup>b</sup>	88.3 <sup>f</sup>	87.0 <sup>f</sup>	89.8 <sup>f</sup>	88.9 <sup>f</sup>	88.0 <sup>f</sup>	89.8 <sup>f</sup>	85.0 <sup>f</sup>	81.2 <sup>f</sup>	89.7 <sup>f</sup>
5-Year Period Survival (Percent) <sup>cd</sup>									
2013	87.1	86.4	88.1	87.3	86.9	87.8	84.3	80.7	88.5
Stage Distribution (%) 2007-2013 <sup>ce</sup>									
All Stages									
Number of cases	14,839	8,117	6,722	11,934	6,541	5,393	1,883	1,022	861
Percent	100%	100%	100%	100%	100%	100%	100%	100%	100%
Localized	16	17	14	15	17	14	18	19	18
Regional	40	35	46	41	36	48	31	26	38
Distant	40	44	35	39	43	34	48	53	42
Unstaged	4	4	4	4	4	4	2	2	3
5-Year Relative Survival (Percent), 2007-2013 <sup>c</sup>									
Age at Diagnosis:									
Ages <45	94.0	93.1	95.0	94.8	94.4	95.4	88.0	84.2	92.4
Ages 45-54	87.2	85.0	90.6	88.2	86.5	90.9	82.7	77.9	90.0
Ages 55-64	78.2	79.0	77.0	78.8	80.3	76.5	69.4	64.7 <sup>g</sup>	73.9 <sup>g</sup>
Ages 65-74	67.0	65.5	68.8	67.0	64.5	70.1	65.1 <sup>g</sup>	78.5 <sup>h</sup>	52.1 <sup>h</sup>
Ages 75+	44.5	44.0	44.4	44.9	43.8	45.1	46.0 <sup>h</sup>	-	44.8 <sup>h</sup>
Ages <65	91.1	90.0	92.5	91.8	91.2	92.7	85.2	81.2	89.8
Ages 65+	56.7	56.6	56.8	56.7	55.6	57.8	59.9 <sup>g</sup>	72.2 <sup>g</sup>	49.8 <sup>g</sup>
Stage <sup>e</sup> :									
All Stages	86.4	85.6	87.4	86.6	86.1	87.3	83.5	80.7	86.7
Localized	92.2	92.9	91.0	92.1	93.1	90.5	91.7	90.3	92.9
Regional	93.1	92.4	93.7	93.3	92.8	93.9	90.2	89.3	90.7
Distant	77.9	77.9	77.8	77.8	78.4	76.8	76.4	73.3	81.1
Unstaged	82.1	79.5	84.6	81.4	78.4	84.6	70.9 <sup>g</sup>	-	-

<sup>a</sup> Based on End Results data from a series of hospital registries and one population-based registry.

<sup>b</sup> SEER 9 areas (San Francisco, Connecticut, Detroit, Hawaii, Iowa, New Mexico, Seattle, Utah, Atlanta).

Based on follow-up of patients into 2014.

<sup>c</sup> SEER 18 areas (San Francisco, Connecticut, Detroit, Hawaii, Iowa, New Mexico, Seattle, Utah, Atlanta, San Jose-Monterey, Los Angeles, Alaska Native Registry, Rural Georgia, California excluding SF/SJM/LA, Kentucky, Louisiana, New Jersey and Georgia excluding ATL/RG).

Based on follow-up of patients into 2014.

<sup>d</sup> Period survival provides a 2013 estimate of survival by piecing together the most recent conditional survival estimates from several cohorts. It is computed here using three year calendar blocks (2010-2012: 0-1 year survival), (2009-2011: 1-2 year survival), (2008-2010: 2-3 year survival), (2007-2009: 3-4 year survival), (2006-2008: 4-5 years survival).

<sup>e</sup> Stage at diagnosis is classified using SEER Summary Stage 2000. Stage distribution percentages may not sum to 100 due to rounding.

<sup>f</sup> The difference between 1975-1977 and 2007-2013 is statistically significant (p<.05).

<sup>g</sup> The standard error is between 5 and 10 percentage points.

<sup>h</sup> The standard error is greater than 10 percentage points.

- Statistic could not be calculated due to fewer than 25 cases during the time period.

Table 10.6  
Kaposi Sarcoma

5-Year Relative and Period Survival (Percent) by Race, Sex, Diagnosis Year, Stage and Age

	All Races			Whites			Blacks		
	Total	Males	Females	Total	Males	Females	Total	Males	Females
5-Year Relative Survival (Percent)									
Year of Diagnosis:									
1960-1963 <sup>a</sup>	-	-	-	-	-	-	-	-	-
1970-1973 <sup>a</sup>	-	-	-	-	-	-	-	-	-
1975-1977 <sup>b</sup>	80.7 <sup>f</sup>	80.1 <sup>f</sup>	-	79.9 <sup>f</sup>	79.0 <sup>f</sup>	-	-	-	-
1978-1980 <sup>b</sup>	78.3 <sup>f</sup>	79.4 <sup>f</sup>	73.1 <sup>g</sup>	78.0 <sup>f</sup>	78.4 <sup>f</sup>	72.5 <sup>g</sup>	-	-	-
1981-1983 <sup>b</sup>	35.7	33.4	64.3 <sup>g</sup>	34.0	31.6	64.2 <sup>g</sup>	-	-	-
1984-1986 <sup>b</sup>	13.0	11.7	70.5 <sup>g</sup>	12.7	11.4	70.2 <sup>g</sup>	16.8	15.7	-
1987-1989 <sup>b</sup>	9.9	9.3	68.5 <sup>g</sup>	9.4	8.8	72.3 <sup>g</sup>	12.4	11.3	-
1990-1992 <sup>b</sup>	9.3	8.5	53.9 <sup>f</sup>	8.8	8.1	55.4 <sup>f</sup>	11.5	10.5	-
1993-1995 <sup>b</sup>	21.7	21.0	53.8 <sup>f</sup>	22.1	21.2	62.1 <sup>g</sup>	17.5	16.7	-
1996-1998 <sup>b</sup>	52.4	51.5	72.2 <sup>g</sup>	57.0	55.7	86.5 <sup>f</sup>	39.9	39.3	-
1999-2001 <sup>b</sup>	58.2	57.7	61.0 <sup>f</sup>	64.6	63.0	79.2 <sup>f</sup>	43.9	45.5	-
2003-2006 <sup>b</sup>	68.0	67.5	70.7 <sup>f</sup>	78.5	77.9	78.4 <sup>f</sup>	46.4	46.3	-
2007-2013 <sup>b</sup>	75.9 <sup>e</sup>	76.0	72.3 <sup>f</sup>	80.2	80.2	74.6 <sup>f</sup>	66.3	67.0	-
5-Year Period Survival (Percent) <sup>cd</sup>									
2013	74.2	73.9	75.7	76.7	75.9	80.5	67.5	69.5	-
5-Year Relative Survival (Percent), 2007-2013 <sup>c</sup>									
Age at Diagnosis:									
Ages <45	67.8	68.4	44.2 <sup>f</sup>	71.1	71.3	-	61.4	62.5	39.0 <sup>g</sup>
Ages 45-54	73.3	73.6	-	73.1	72.9	-	70.2	72.0	-
Ages 55-64	79.4	78.5	-	79.8	77.8	-	72.7 <sup>f</sup>	75.1 <sup>f</sup>	-
Ages 65-74	83.6	82.8	84.2 <sup>f</sup>	84.7	83.6	87.5 <sup>f</sup>	-	-	-
Ages 75+	85.9	89.0	78.4 <sup>f</sup>	86.1	89.6	77.4 <sup>f</sup>	-	-	-
Ages <65	70.6	71.0	60.7 <sup>f</sup>	72.9	72.7	82.2 <sup>f</sup>	64.2	65.4	46.1 <sup>f</sup>
Ages 65+	85.9	87.6	81.4 <sup>f</sup>	86.4	88.2	81.2 <sup>f</sup>	69.6 <sup>g</sup>	-	-

<sup>a</sup> Based on End Results data from a series of hospital registries and one population-based registry.  
<sup>b</sup> SEER 9 areas (San Francisco, Connecticut, Detroit, Hawaii, Iowa, New Mexico, Seattle, Utah, Atlanta).  
Based on follow-up of patients into 2014.  
<sup>c</sup> SEER 18 areas (San Francisco, Connecticut, Detroit, Hawaii, Iowa, New Mexico, Seattle, Utah, Atlanta, San Jose-Monterey, Los Angeles, Alaska Native Registry, Rural Georgia, California excluding SF/SJM/LA, Kentucky, Louisiana, New Jersey and Georgia excluding ATL/RG).  
Based on follow-up of patients into 2014.  
<sup>d</sup> Period survival provides a 2013 estimate of survival by piecing together the most recent conditional survival estimates from several cohorts. It is computed here using three year calendar blocks (2010-2012: 0-1 year survival), (2009-2011: 1-2 year survival), (2008-2010: 2-3 year survival), (2007-2009: 3-4 year survival), (2006-2008: 4-5 years survival).  
The difference between 1975-1977 and 2007-2013 is statistically significant (p<.05).  
<sup>e</sup> The standard error is between 5 and 10 percentage points.  
<sup>f</sup> The standard error is greater than 10 percentage points.  
<sup>g</sup> -  
- Statistic could not be calculated due to fewer than 25 cases during the time period.

Table 11.8  
Cancer of the Kidney and Renal Pelvis (Invasive)

5-Year Relative and Period Survival (Percent) by Race, Sex, Diagnosis Year, Stage and Age

	All Races			Whites			Blacks		
	Total	Males	Females	Total	Males	Females	Total	Males	Females
5-Year Relative Survival (Percent)									
Year of Diagnosis:									
1960-1963 <sup>a</sup>	-	-	-	37	36	39	38	38	37
1970-1973 <sup>a</sup>	-	-	-	46	44	50	44	40	49
1975-1977 <sup>b</sup>	50.1	50.2	49.8	49.8	50.1	49.3	48.8	47.9	50.4 <sup>g</sup>
1978-1980 <sup>b</sup>	52.9	52.7	53.3	52.6	52.8	52.1	56.9	51.9	62.8 <sup>g</sup>
1981-1983 <sup>b</sup>	50.0	51.0	48.3	49.9	51.2	47.7	50.6	50.2	51.2
1984-1986 <sup>b</sup>	54.5	55.0	53.7	54.7	55.4	53.5	52.6	49.2	57.5
1987-1989 <sup>b</sup>	56.7	57.0	56.1	57.3	58.0	56.1	54.6	52.7	57.0
1990-1992 <sup>b</sup>	60.2	60.5	59.6	60.7	61.2	59.8	57.0	55.2	59.1
1993-1995 <sup>b</sup>	61.5	61.7	61.1	62.0	62.8	60.7	57.4	54.0	62.1
1996-1998 <sup>b</sup>	62.5	62.9	61.9	62.0	62.6	61.1	66.9	68.1	64.5
1999-2001 <sup>b</sup>	64.9	63.4	67.3	64.9	63.7	66.9	63.9	59.2	69.2
2003-2006 <sup>b</sup>	71.3	71.2	71.5	71.6	71.7	71.6	68.1	67.4	69.2
2007-2013 <sup>b</sup>	75.1 <sup>f</sup>	74.1 <sup>f</sup>	76.7 <sup>f</sup>	74.8 <sup>f</sup>	73.9 <sup>f</sup>	76.4 <sup>f</sup>	76.3 <sup>f</sup>	75.6 <sup>f</sup>	77.2 <sup>f</sup>
5-Year Period Survival (Percent) <sup>cd</sup>									
2013	74.6	73.9	75.7	74.3	73.7	75.4	75.9	74.9	77.3
Stage Distribution (%) 2007-2013 <sup>ce</sup>									
All Stages									
Number of cases	75,311	46,967	28,344	61,355	38,454	22,901	8,632	5,118	3,514
Percent	100%	100%	100%	100%	100%	100%	100%	100%	100%
Localized	65	64	68	64	63	67	71	69	73
Regional	16	17	15	17	18	15	12	12	11
Distant	16	17	14	16	17	14	14	16	12
Unstaged	3	3	3	3	3	3	3	3	3
5-Year Relative Survival (Percent), 2007-2013 <sup>c</sup>									
Age at Diagnosis:									
Ages <45	87.1	85.3	89.9	88.8	87.0	91.4	79.8	77.0	83.7
Ages 45-54	80.1	78.0	84.2	80.3	78.0	84.8	77.6	76.1	80.4
Ages 55-64	76.0	74.5	78.9	76.0	74.5	78.9	76.6	75.0	79.1
Ages 65-74	73.1	72.0	74.8	73.0	71.9	74.9	73.2	72.0	74.6
Ages 75+	59.0	60.3	57.5	59.2	60.6	57.5	56.5	54.9	57.8
Ages <65	79.4	77.5	83.0	79.7	77.8	83.4	77.6	75.8	80.6
Ages 65+	67.0	67.4	66.4	66.9	67.4	66.2	67.6	67.2	67.9
Stage <sup>e</sup> :									
All Stages	74.1	73.5	75.2	74.1	73.5	75.2	74.2	73.3	75.5
Localized	92.6	92.6	92.7	92.9	92.7	93.0	91.1	91.6	90.3
Regional	66.7	68.1	64.0	67.2	68.5	64.7	60.4	60.8	59.9
Distant	11.7	11.0	13.0	11.9	11.5	12.6	8.5	6.6	12.2
Unstaged	38.0	41.5	33.3	36.0	38.9	31.9	41.0	47.7 <sup>g</sup>	31.9 <sup>g</sup>

<sup>a</sup> Based on End Results data from a series of hospital registries and one population-based registry.

<sup>b</sup> SEER 9 areas (San Francisco, Connecticut, Detroit, Hawaii, Iowa, New Mexico, Seattle, Utah, Atlanta).

Based on follow-up of patients into 2014.

<sup>c</sup> SEER 18 areas (San Francisco, Connecticut, Detroit, Hawaii, Iowa, New Mexico, Seattle, Utah, Atlanta, San Jose-Monterey, Los Angeles, Alaska Native Registry, Rural Georgia, California excluding SF/SJM/LA, Kentucky, Louisiana, New Jersey and Georgia excluding ATL/RG).

Based on follow-up of patients into 2014.

<sup>d</sup> Period survival provides a 2013 estimate of survival by piecing together the most recent conditional survival estimates from several cohorts. It is computed here using three year calendar blocks (2010-2012: 0-1 year survival), (2009-2011: 1-2 year survival), (2008-2010: 2-3 year survival), (2007-2009: 3-4 year survival), (2006-2008: 4-5 years survival).

<sup>e</sup> Stage at diagnosis is classified using SEER Summary Stage 2000. Stage distribution percentages may not sum to 100 due to rounding.

<sup>f</sup> The difference between 1975-1977 and 2007-2013 is statistically significant ( $p < .05$ ).

<sup>g</sup> The standard error is between 5 and 10 percentage points.

<sup>h</sup> The standard error is greater than 10 percentage points.

- Statistic could not be calculated due to fewer than 25 cases during the time period.

Table 12.8  
Cancer of the Larynx (Invasive)

5-Year Relative and Period Survival (Percent) by Race, Sex, Diagnosis Year, Stage and Age

	All Races			Whites			Blacks		
	Total	Males	Females	Total	Males	Females	Total	Males	Females
5-Year Relative Survival (Percent)									
Year of Diagnosis:									
1960-1963 <sup>a</sup>	-	-	-	53	54	46	-	-	-
1970-1973 <sup>a</sup>	-	-	-	62	63	56	-	-	-
1975-1977 <sup>b</sup>	66.0	66.6	62.6	66.7	67.4	62.3	58.2	57.1	63.3 <sup>g</sup>
1978-1980 <sup>b</sup>	65.3	65.5	64.6	66.2	66.3	65.4	56.9	57.2	55.8 <sup>g</sup>
1981-1983 <sup>b</sup>	68.1	68.4	66.9	69.5	69.7	68.5	56.5	57.7	50.7 <sup>g</sup>
1984-1986 <sup>b</sup>	65.3	65.9	62.2	67.0	67.6	63.9	53.3	53.7	51.1 <sup>g</sup>
1987-1989 <sup>b</sup>	65.5	66.6	61.1	67.0	68.6	60.7	55.9	54.1	61.3 <sup>g</sup>
1990-1992 <sup>b</sup>	65.8	66.7	62.3	67.7	68.5	64.4	53.7	54.3	51.3 <sup>g</sup>
1993-1995 <sup>b</sup>	63.6	65.3	56.6	65.2	67.0	57.6	53.1	54.5	47.4 <sup>g</sup>
1996-1998 <sup>b</sup>	65.0	66.8	58.7	66.9	68.5	61.1	53.8	56.8	45.0 <sup>g</sup>
1999-2001 <sup>b</sup>	63.3	64.2	59.6	65.2	66.2	60.8	49.8	49.1	52.4 <sup>g</sup>
2003-2006 <sup>b</sup>	62.1	62.6	60.2	64.3	64.6	63.0	51.5	53.1	45.5
2007-2013 <sup>b</sup>	62.6 <sup>f</sup>	62.8 <sup>f</sup>	61.5	64.5	64.6	64.2	50.2	50.9	47.8
5-Year Period Survival (Percent) <sup>cd</sup>									
2013	60.8	60.9	60.4	62.2	62.3	62.0	51.5	51.9	50.4
Stage Distribution (%) 2007-2013 <sup>ce</sup>									
All Stages									
Number of cases	16,335	13,222	3,113	13,099	10,622	2,477	2,491	1,959	532
Percent	100%	100%	100%	100%	100%	100%	100%	100%	100%
Localized	55	56	49	57	58	51	44	47	36
Regional	22	20	30	22	20	29	26	23	34
Distant	20	20	19	18	18	17	28	28	27
Unstaged	3	3	3	3	4	3	2	2	3
5-Year Relative Survival (Percent), 2007-2013 <sup>c</sup>									
Age at Diagnosis:									
Ages <45	74.4	71.2	82.3	78.5	75.8	84.9	54.7 <sup>g</sup>	50.5 <sup>g</sup>	-
Ages 45-54	62.3	62.5	61.5	63.9	63.4	65.4	54.1	56.7	47.0
Ages 55-64	60.5	60.4	61.1	62.5	62.3	63.1	49.2	48.8	50.9
Ages 65-74	59.9	61.3	52.5	60.4	61.9	52.9	53.1	54.7	45.7 <sup>g</sup>
Ages 75+	58.3	60.7	48.3	58.9	61.5	47.8	49.7	50.1 <sup>g</sup>	47.1 <sup>g</sup>
Ages <65	62.0	61.7	63.3	64.0	63.5	66.2	51.1	51.3	50.2
Ages 65+	59.1	60.9	50.7	59.7	61.6	50.8	52.1	53.5	46.0 <sup>g</sup>
Stage <sup>e</sup> :									
All Stages	60.7	61.3	58.1	62.0	62.6	59.5	51.5	52.1	49.1
Localized	77.0	77.8	73.0	77.4	78.1	73.7	71.3	72.4	65.6
Regional	45.1	43.8	48.7	45.8	44.6	49.1	41.4	39.4	46.1
Distant	34.3	33.9	35.9	34.9	34.6	36.1	30.3	29.5	33.1
Unstaged	52.9	53.3	49.1 <sup>g</sup>	55.0	55.5	51.0 <sup>g</sup>	35.1 <sup>g</sup>	35.6 <sup>g</sup>	-

<sup>a</sup> Based on End Results data from a series of hospital registries and one population-based registry.<sup>b</sup> SEER 9 areas (San Francisco, Connecticut, Detroit, Hawaii, Iowa, New Mexico, Seattle, Utah, Atlanta).

Based on follow-up of patients into 2014.

<sup>c</sup> SEER 18 areas (San Francisco, Connecticut, Detroit, Hawaii, Iowa, New Mexico, Seattle, Utah, Atlanta, San Jose-Monterey, Los Angeles, Alaska Native Registry, Rural Georgia, California excluding SF/SJM/LA, Kentucky, Louisiana, New Jersey and Georgia excluding ATL/RG).

Based on follow-up of patients into 2014.

<sup>d</sup> Period survival provides a 2013 estimate of survival by piecing together the most recent conditional survival estimates from several cohorts. It is computed here using three year calendar blocks (2010-2012: 0-1 year survival), (2009-2011: 1-2 year survival), (2008-2010: 2-3 year survival), (2007-2009: 3-4 year survival), (2006-2008: 4-5 years survival).<sup>e</sup> Stage at diagnosis is classified using SEER Summary Stage 2000. Stage distribution percentages may not sum to 100 due to rounding.<sup>f</sup> The difference between 1975-1977 and 2007-2013 is statistically significant (p<.05).<sup>g</sup> The standard error is between 5 and 10 percentage points.<sup>h</sup> The standard error is greater than 10 percentage points.

- Statistic could not be calculated due to fewer than 25 cases during the time period.

Table 13.14  
Leukemia

## 5-Year Relative and Period Survival (Percent) by Race, Sex, Diagnosis Year and Age

	All Races			Whites			Blacks		
	Total	Males	Females	Total	Males	Females	Total	Males	Females
5-Year Relative Survival (Percent)									
Year of Diagnosis:									
1960-1963 <sup>a</sup>	-	-	-	14	-	-	-	-	-
1970-1973 <sup>a</sup>	-	-	-	22	-	-	-	-	-
1975-1977 <sup>b</sup>	34.1	33.0	35.6	34.5	33.6	35.8	33.4	30.4	36.7
1978-1980 <sup>b</sup>	36.0	35.0	37.3	36.7	35.8	38.0	28.2	27.3	29.3
1981-1983 <sup>b</sup>	37.3	36.9	37.8	38.1	37.8	38.5	33.9	33.4	34.3
1984-1986 <sup>b</sup>	40.5	40.1	41.1	41.6	41.3	42.0	32.7	31.5	34.1
1987-1989 <sup>b</sup>	42.9	44.0	41.3	43.9	45.5	41.7	35.0	32.7	37.8
1990-1992 <sup>b</sup>	45.2	44.6	46.0	46.4	46.2	46.8	35.7	30.5	41.3
1993-1995 <sup>b</sup>	47.5	48.4	46.4	48.6	49.4	47.5	41.3	41.6	40.9
1996-1998 <sup>b</sup>	48.3	48.5	48.0	49.6	49.6	49.7	38.6	39.0	38.0
1999-2001 <sup>b</sup>	50.9	51.9	49.5	52.0	52.9	50.6	43.3	44.5	41.9
2003-2006 <sup>b</sup>	59.5	59.9	58.9	60.4	60.8	59.8	53.3	55.3	50.8
2007-2013 <sup>b</sup>	63.7 <sup>e</sup>	65.2 <sup>e</sup>	61.7 <sup>e</sup>	64.8 <sup>e</sup>	66.0 <sup>e</sup>	63.0 <sup>e</sup>	57.8 <sup>e</sup>	59.0 <sup>e</sup>	56.1 <sup>e</sup>
5-Year Period Survival (Percent) <sup>cd</sup>									
2013	61.8	62.8	60.4	62.2	62.9	61.1	55.6	57.7	53.1
5-Year Relative Survival (Percent), 2007-2013 <sup>c</sup>									
Age at Diagnosis:									
Ages <45	74.8	74.4	75.4	75.8	75.0	76.9	66.8	66.7	66.9
Ages 45-54	69.5	70.8	67.6	71.1	72.0	69.7	58.8	60.2	56.7
Ages 55-64	68.1	69.1	66.4	69.1	70.0	67.5	56.9	56.2	57.3
Ages 65-74	58.2	58.4	57.8	58.8	58.7	59.0	51.4	52.0	50.5
Ages 75+	39.7	39.8	39.6	40.6	40.4	40.7	31.0	32.3	29.9
Ages <65	71.4	71.7	70.9	72.4	72.5	72.3	62.0	62.0	61.9
Ages 65+	47.8	48.7	46.7	48.4	49.1	47.6	41.6	43.3	39.8

<sup>a</sup> Based on End Results data from a series of hospital registries and one population-based registry.

<sup>b</sup> SEER 9 areas (San Francisco, Connecticut, Detroit, Hawaii, Iowa, New Mexico, Seattle, Utah, Atlanta).

Based on follow-up of patients into 2014.

<sup>c</sup> SEER 18 areas (San Francisco, Connecticut, Detroit, Hawaii, Iowa, New Mexico, Seattle, Utah, Atlanta, San Jose-Monterey, Los Angeles, Alaska Native Registry, Rural Georgia, California excluding SF/SJM/LA, Kentucky, Louisiana, New Jersey and Georgia excluding ATL/RG).

Based on follow-up of patients into 2014.

<sup>d</sup> Period survival provides a 2013 estimate of survival by piecing together the most recent conditional survival estimates from several cohorts. It is computed here using three year calendar blocks (2010-2012: 0-1 year survival), (2009-2011: 1-2 year survival), (2008-2010: 2-3 year survival), (2007-2009: 3-4 year survival), (2006-2008: 4-5 years survival).

<sup>e</sup> The difference between 1975-1977 and 2007-2013 is statistically significant ( $p < .05$ ).

<sup>f</sup> The standard error is between 5 and 10 percentage points.

<sup>g</sup> The standard error is greater than 10 percentage points.

- Statistic could not be calculated due to fewer than 25 cases during the time period.

Table 13.15  
Lymphocytic Leukemia

5-Year Relative and Period Survival (Percent) by Race, Sex, Diagnosis Year and Age

	All Races			Whites			Blacks		
	Total	Males	Females	Total	Males	Females	Total	Males	Females
<u>Acute Lymphocytic Leukemia</u>									
5-Year Relative Survival (Percent)									
Year of Diagnosis:									
1975-1977 <sup>a</sup>	40.6	36.9	45.6	40.8	37.4	45.7	33.5 <sup>e</sup>	-	-
...									
1984-1986 <sup>a</sup>	52.1	49.1	56.1	52.8	49.4	57.8	36.0 <sup>e</sup>	43.5 <sup>e</sup>	27.3 <sup>e</sup>
1987-1989 <sup>a</sup>	54.3	53.7	55.0	54.8	54.7	54.9	44.7 <sup>e</sup>	42.0 <sup>e</sup>	47.1 <sup>e</sup>
1990-1992 <sup>a</sup>	58.0	54.5	63.1	57.7	54.9	62.0	57.1 <sup>e</sup>	50.4 <sup>e</sup>	63.3 <sup>e</sup>
1993-1995 <sup>a</sup>	60.1	57.8	63.4	59.7	57.8	62.5	53.2 <sup>e</sup>	45.9 <sup>e</sup>	63.8 <sup>e</sup>
1996-1998 <sup>a</sup>	65.5	64.3	66.9	66.3	64.2	68.9	55.6 <sup>e</sup>	59.1 <sup>e</sup>	50.2 <sup>e</sup>
1999-2001 <sup>a</sup>	63.5	63.4	63.5	64.8	65.2	64.2	56.0 <sup>e</sup>	48.8 <sup>e</sup>	63.0 <sup>e</sup>
2003-2006 <sup>a</sup>	67.9	66.4	70.0	67.9	66.0	70.5	64.4	65.7 <sup>e</sup>	62.7 <sup>e</sup>
2007-2013 <sup>a</sup>	71.0 <sup>d</sup>	71.3 <sup>d</sup>	70.6 <sup>d</sup>	72.2 <sup>d</sup>	72.6 <sup>d</sup>	71.8 <sup>d</sup>	62.2 <sup>d</sup>	62.6	61.4 <sup>e</sup>
5-Year Period Survival (Percent) <sup>bc</sup>									
2013	68.8	68.8	68.8	69.2	69.0	69.3	61.7	64.1	58.3
5-Year Relative Survival (Percent), 2007-2013 <sup>b</sup>									
Age at Diagnosis:									
Ages <45	79.9	78.9	81.3	80.2	79.0	81.8	76.0	75.9	75.9
Ages 45-54	36.4	37.4	35.2	37.0	38.6	34.8	22.8 <sup>e</sup>	24.6 <sup>e</sup>	-
Ages 55-64	25.8	23.5	28.6	26.8	25.4	28.8	9.1 <sup>e</sup>	16.7 <sup>e</sup>	-
Ages 65-74	22.7	22.1	23.3	21.6	22.0	21.3	-	-	-
Ages 75+	9.2	9.6	8.9	9.1	9.3	8.6	13.3 <sup>e</sup>	-	-
Ages <65	72.9	72.2	73.8	73.2	72.3	74.2	67.9	68.5	66.5
Ages 65+	16.7	16.5	16.8	16.1	16.5	15.6	15.5 <sup>e</sup>	-	19.8 <sup>e</sup>
<u>Chronic Lymphocytic Leukemia</u>									
5-Year Relative Survival (Percent)									
Year of Diagnosis:									
1975-1977 <sup>a</sup>	67.1	64.7	70.3	67.9	65.4	71.1	56.9 <sup>e</sup>	55.1 <sup>e</sup>	59.0 <sup>e</sup>
...									
1984-1986 <sup>a</sup>	72.3	71.1	73.9	72.6	71.4	74.3	67.0 <sup>e</sup>	64.4 <sup>e</sup>	68.4 <sup>e</sup>
1987-1989 <sup>a</sup>	72.7	72.7	72.9	73.8	73.9	73.7	58.1	55.5 <sup>e</sup>	61.5 <sup>e</sup>
1990-1992 <sup>a</sup>	74.1	71.7	77.3	75.3	73.1	78.3	52.2	43.4 <sup>e</sup>	60.9 <sup>e</sup>
1993-1995 <sup>a</sup>	77.1	77.0	77.2	78.2	78.0	78.5	63.3	64.0 <sup>e</sup>	62.1 <sup>e</sup>
1996-1998 <sup>a</sup>	75.4	73.7	77.7	76.5	75.0	78.6	58.1	51.5 <sup>e</sup>	66.0 <sup>e</sup>
1999-2001 <sup>a</sup>	78.4	77.9	79.1	79.2	78.6	80.1	65.7	64.5 <sup>e</sup>	66.1 <sup>e</sup>
2003-2006 <sup>a</sup>	84.3	83.2	85.8	84.7	83.5	86.3	78.7	77.1	80.7
2007-2013 <sup>a</sup>	86.2 <sup>d</sup>	86.9 <sup>d</sup>	85.2 <sup>d</sup>	86.7 <sup>d</sup>	87.3 <sup>d</sup>	85.6 <sup>d</sup>	79.1 <sup>d</sup>	78.8 <sup>d</sup>	78.8
5-Year Period Survival (Percent) <sup>bc</sup>									
2013	83.5	83.5	83.4	83.6	83.6	83.6	72.5	73.0	71.3
5-Year Relative Survival (Percent), 2007-2013 <sup>b</sup>									
Age at Diagnosis:									
Ages <45	92.5	92.0	92.7	92.5	92.1	92.5	84.4 <sup>e</sup>	83.4 <sup>e</sup>	-
Ages 45-54	93.6	92.9	94.8	94.5	93.4	96.4	78.6	81.1	74.8 <sup>e</sup>
Ages 55-64	90.6	90.4	91.1	90.9	90.7	91.3	79.4	76.0	83.7
Ages 65-74	86.2	84.7	88.7	86.6	84.9	89.5	74.9	74.5	74.8
Ages 75+	70.6	70.2	71.0	70.9	70.7	71.1	55.6	53.9 <sup>e</sup>	56.1 <sup>e</sup>
Ages <65	91.6	91.3	92.3	92.0	91.6	92.9	79.6	78.4	80.9
Ages 65+	77.9	77.6	78.1	78.1	77.9	78.3	66.5	66.1	66.4

<sup>a</sup> SEER 9 areas (San Francisco, Connecticut, Detroit, Hawaii, Iowa, New Mexico, Seattle, Utah, Atlanta).

Based on follow-up of patients into 2014.

<sup>b</sup> SEER 18 areas (San Francisco, Connecticut, Detroit, Hawaii, Iowa, New Mexico, Seattle, Utah, Atlanta, San Jose-Monterey, Los Angeles, Alaska Native Registry, Rural Georgia, California excluding SF/SJM/LA, Kentucky, Louisiana, New Jersey and Georgia excluding ATL/RG).

Based on follow-up of patients into 2014.

<sup>c</sup> Period survival provides a 2013 estimate of survival by piecing together the most recent conditional survival estimates from several cohorts. It is computed here using three year calendar blocks (2010-2012: 0-1 year survival), (2009-2011: 1-2 year survival), (2008-2010: 2-3 year survival), (2007-2009: 3-4 year survival), (2006-2008: 4-5 years survival).

<sup>d</sup> The difference between 1975-1977 and 2007-2013 is statistically significant (p<.05).

<sup>e</sup> The standard error is between 5 and 10 percentage points.

<sup>f</sup> The standard error is greater than 10 percentage points.

- Statistic could not be calculated due to fewer than 25 cases during the time period.

Table 13.16  
Myeloid Leukemia

5-Year Relative and Period Survival (Percent) by Race, Sex, Diagnosis Year and Age

	All Races			Whites			Blacks		
	Total	Males	Females	Total	Males	Females	Total	Males	Females
<u>Acute Myeloid Leukemia</u>									
5-Year Relative Survival (Percent)									
Year of Diagnosis:									
1975-1977 <sup>a</sup>	6.2	5.5	7.0	5.8	5.4	6.2	10.1	8.2	11.7
...									
1984-1986 <sup>a</sup>	10.6	9.2	12.3	10.2	8.9	11.8	9.8	6.7	12.9
1987-1989 <sup>a</sup>	11.4	9.1	14.2	11.3	9.6	13.2	9.2	4.4	15.7 <sup>e</sup>
1990-1992 <sup>a</sup>	13.7	12.6	15.1	13.4	12.2	14.9	13.5	12.9	13.9
1993-1995 <sup>a</sup>	16.2	14.9	17.5	15.4	14.1	16.8	21.5	20.6 <sup>e</sup>	22.0
1996-1998 <sup>a</sup>	17.0	16.0	18.3	15.6	14.5	17.1	22.1	25.2	18.2
1999-2001 <sup>a</sup>	19.2	18.8	19.7	18.7	17.7	19.9	19.3	24.8	14.2
2003-2006 <sup>a</sup>	24.3	21.8	27.0	23.9	21.5	26.6	24.5	23.2	25.7
2007-2013 <sup>a</sup>	27.4 <sup>d</sup>	27.1 <sup>d</sup>	27.6 <sup>d</sup>	26.8 <sup>d</sup>	26.3 <sup>d</sup>	27.3 <sup>d</sup>	28.6 <sup>d</sup>	27.7 <sup>d</sup>	29.2 <sup>d</sup>
5-Year Period Survival (Percent) <sup>bc</sup>									
2013	28.5	27.0	30.2	28.0	26.4	30.0	30.5	28.4	32.5
5-Year Relative Survival (Percent), 2007-2013 <sup>b</sup>									
Age at Diagnosis:									
Ages <45	58.4	56.1	60.8	59.4	56.8	62.3	51.7	48.0	54.7
Ages 45-54	41.3	39.7	43.1	42.8	40.8	45.1	34.6	31.7	37.4 <sup>e</sup>
Ages 55-64	29.8	29.1	30.7	30.7	29.7	32.1	23.1	24.2	21.5
Ages 65-74	12.5	12.0	13.2	12.6	12.2	13.1	13.1	11.7	14.3
Ages 75+	2.6	2.3	2.9	2.7	2.3	3.0	2.4	0.0	2.4
Ages <65	45.2	43.0	47.6	45.8	43.4	48.6	40.1	36.9	43.3
Ages 65+	6.7	6.7	6.8	6.8	6.8	6.7	7.6	7.4	7.7
<u>Chronic Myeloid Leukemia</u>									
5-Year Relative Survival (Percent)									
Year of Diagnosis:									
1975-1977 <sup>a</sup>	21.8	19.3	25.1	20.5	18.4	23.4	27.7 <sup>e</sup>	21.6 <sup>e</sup>	35.5 <sup>e</sup>
...									
1984-1986 <sup>a</sup>	22.4	20.2	25.6	22.9	20.2	26.8	21.4	20.3 <sup>e</sup>	22.2 <sup>e</sup>
1987-1989 <sup>a</sup>	30.3	30.7	29.8	30.2	31.1	29.0	33.3 <sup>e</sup>	28.1 <sup>e</sup>	41.3 <sup>e</sup>
1990-1992 <sup>a</sup>	30.7	29.6	32.2	30.3	30.0	30.6	34.9 <sup>e</sup>	25.5 <sup>e</sup>	44.9 <sup>e</sup>
1993-1995 <sup>a</sup>	35.4	35.2	35.8	35.2	35.1	35.2	35.6 <sup>e</sup>	32.8 <sup>e</sup>	40.2 <sup>e</sup>
1996-1998 <sup>a</sup>	37.1	37.7	36.2	37.9	37.6	38.3	31.0	30.4 <sup>e</sup>	31.4 <sup>e</sup>
1999-2001 <sup>a</sup>	47.3	45.8	49.3	45.9	44.1	48.3	49.0 <sup>e</sup>	49.6 <sup>e</sup>	48.1 <sup>e</sup>
2003-2006 <sup>a</sup>	57.1	56.8	57.5	55.8	55.6	56.1	58.2	60.1 <sup>e</sup>	55.5 <sup>e</sup>
2007-2013 <sup>a</sup>	68.0 <sup>d</sup>	66.8 <sup>d</sup>	69.5 <sup>d</sup>	67.1 <sup>d</sup>	65.6 <sup>d</sup>	68.8 <sup>d</sup>	69.9 <sup>d</sup>	67.9 <sup>de</sup>	72.7 <sup>d</sup>
5-Year Period Survival (Percent) <sup>bc</sup>									
2013	68.8	68.3	69.6	68.0	67.4	69.0	68.0	68.2	67.1
5-Year Relative Survival (Percent), 2007-2013 <sup>b</sup>									
Age at Diagnosis:									
Ages <45	88.8	87.5	90.7	90.3	88.7	92.8	76.6	73.5	81.1
Ages 45-54	84.3	81.2	88.8	84.8	82.0	88.9	84.0	79.3 <sup>e</sup>	89.5
Ages 55-64	76.9	74.0	81.3	76.9	73.7	82.4	69.7	64.5 <sup>e</sup>	73.8 <sup>e</sup>
Ages 65-74	57.8	54.8	62.0	57.4	54.6	61.4	60.1 <sup>e</sup>	53.6 <sup>e</sup>	67.0 <sup>e</sup>
Ages 75+	30.0	28.1	31.9	29.0	26.7	31.4	28.9 <sup>e</sup>	26.3 <sup>f</sup>	31.9 <sup>e</sup>
Ages <65	83.7	81.4	87.1	84.2	81.7	88.3	76.5	72.5	80.9
Ages 65+	42.7	41.3	44.3	41.8	40.4	43.6	46.4	44.2 <sup>e</sup>	48.6 <sup>e</sup>

<sup>a</sup> SEER 9 areas (San Francisco, Connecticut, Detroit, Hawaii, Iowa, New Mexico, Seattle, Utah, Atlanta).  
Based on follow-up of patients into 2014.

<sup>b</sup> SEER 18 areas (San Francisco, Connecticut, Detroit, Hawaii, Iowa, New Mexico, Seattle, Utah, Atlanta, San Jose-Monterey, Los Angeles, Alaska Native Registry, Rural Georgia, California excluding SF/SJM/LA, Kentucky, Louisiana, New Jersey and Georgia excluding ATL/RG).  
Based on follow-up of patients into 2014.

<sup>c</sup> Period survival provides a 2013 estimate of survival by piecing together the most recent conditional survival estimates from several cohorts. It is computed here using three year calendar blocks (2010-2012: 0-1 year survival), (2009-2011: 1-2 year survival), (2008-2010: 2-3 year survival), (2007-2009: 3-4 year survival), (2006-2008: 4-5 years survival).  
The difference between 1975-1977 and 2007-2013 is statistically significant (p<.05).

<sup>d</sup> The standard error is between 5 and 10 percentage points.

<sup>e</sup> The standard error is greater than 10 percentage points.

- Statistic could not be calculated due to fewer than 25 cases during the time period.



Table 14.8  
Cancer of the Liver and Intrahepatic Bile Duct (Invasive)

5-Year Relative and Period Survival (Percent) by Race, Sex, Diagnosis Year, Stage and Age

	All Races			Whites			Blacks		
	Total	Males	Females	Total	Males	Females	Total	Males	Females
5-Year Relative Survival (Percent)									
Year of Diagnosis:									
1960-1963 <sup>a</sup>	-	-	-	-	-	-	-	-	-
1970-1973 <sup>a</sup>	-	-	-	-	-	-	-	-	-
1975-1977 <sup>b</sup>	3.4	1.8	6.3	3.4	1.9	5.8	1.8	0.0	5.6
1978-1980 <sup>b</sup>	3.3	2.2	5.4	3.3	2.2	4.8	3.6	3.0	5.0
1981-1983 <sup>b</sup>	3.7	2.9	5.2	3.9	3.0	5.4	2.8	2.1	4.7
1984-1986 <sup>b</sup>	5.7	3.7	9.5	5.7	3.7	9.1	4.4	2.1	9.1
1987-1989 <sup>b</sup>	4.9	3.2	8.0	5.7	3.4	9.4	2.7	1.6	4.9
1990-1992 <sup>b</sup>	5.6	5.0	7.0	6.2	5.1	8.3	2.6	2.0	3.6
1993-1995 <sup>b</sup>	5.6	5.3	6.1	5.2	4.9	5.7	4.0	2.8	7.3
1996-1998 <sup>b</sup>	8.6	8.3	9.1	8.4	7.6	10.2	4.6	5.9	2.0
1999-2001 <sup>b</sup>	11.3	10.9	12.2	10.3	9.7	11.7	7.6	6.8	9.5
2003-2006 <sup>b</sup>	15.7	15.8	15.6	15.2	15.6	13.9	10.5	8.5	16.0
2007-2013 <sup>b</sup>	18.5 <sup>f</sup>	18.7 <sup>f</sup>	17.8 <sup>f</sup>	17.7 <sup>f</sup>	18.0 <sup>f</sup>	16.8 <sup>f</sup>	14.0 <sup>f</sup>	14.3	13.0 <sup>f</sup>
5-Year Period Survival (Percent) <sup>cd</sup>									
2013	18.2	17.8	19.5	17.5	17.2	18.4	14.4	13.0	18.6
Stage Distribution (%) 2007-2013 <sup>ce</sup>									
All Stages									
Number of cases	44,821	32,734	12,087	31,175	22,892	8,283	5,768	4,289	1,479
Percent	100%	100%	100%	100%	100%	100%	100%	100%	100%
Localized	43	43	43	43	43	42	42	41	43
Regional	27	28	25	27	27	25	29	30	27
Distant	18	18	18	18	18	18	19	20	19
Unstaged	12	11	14	13	12	15	10	9	12
5-Year Relative Survival (Percent), 2007-2013 <sup>c</sup>									
Age at Diagnosis:									
Ages <45	38.8	35.6	45.1	43.5	40.4	48.9	27.5	25.8	30.3 <sup>g</sup>
Ages 45-54	20.0	18.7	26.1	20.2	18.9	26.2	12.2	11.5	14.6
Ages 55-64	19.8	18.8	24.1	19.6	18.7	23.4	14.1	12.6	20.4
Ages 65-74	15.7	15.3	16.8	13.6	12.8	15.6	12.9	14.4	9.7
Ages 75+	7.9	8.1	7.6	6.4	7.0	5.7	4.7	4.0	5.0
Ages <65	21.3	19.8	27.2	21.4	19.9	27.2	14.5	13.1	19.5
Ages 65+	12.2	12.4	11.7	10.3	10.5	10.0	10.4	11.8	7.9
Stage <sup>e</sup> :									
All Stages	17.6	17.2	18.6	16.8	16.5	17.6	13.4	12.8	15.1
Localized	31.1	30.8	32.1	29.6	29.3	30.4	25.1	23.6	29.3
Regional	10.7	10.3	11.7	10.8	10.4	12.0	7.0	7.2	6.8
Distant	2.8	2.2	4.6	3.0	2.3	5.0	1.2	1.2	1.6
Unstaged	6.4	6.3	6.7	5.7	5.5	6.3	6.3	7.4	4.6

<sup>a</sup> Based on End Results data from a series of hospital registries and one population-based registry.

<sup>b</sup> SEER 9 areas (San Francisco, Connecticut, Detroit, Hawaii, Iowa, New Mexico, Seattle, Utah, Atlanta).

Based on follow-up of patients into 2014.

<sup>c</sup> SEER 18 areas (San Francisco, Connecticut, Detroit, Hawaii, Iowa, New Mexico, Seattle, Utah, Atlanta, San Jose-Monterey, Los Angeles, Alaska Native Registry, Rural Georgia, California excluding SF/SJM/LA, Kentucky, Louisiana, New Jersey and Georgia excluding ATL/RG).

Based on follow-up of patients into 2014.

<sup>d</sup> Period survival provides a 2013 estimate of survival by piecing together the most recent conditional survival estimates from several cohorts. It is computed here using three year calendar blocks (2010-2012: 0-1 year survival), (2009-2011: 1-2 year survival), (2008-2010: 2-3 year survival), (2007-2009: 3-4 year survival), (2006-2008: 4-5 years survival).

<sup>e</sup> Stage at diagnosis is classified using SEER Summary Stage 2000. Stage distribution percentages may not sum to 100 due to rounding.

<sup>f</sup> The difference between 1975-1977 and 2007-2013 is statistically significant ( $p < .05$ ).

<sup>g</sup> The standard error is between 5 and 10 percentage points.

<sup>h</sup> The standard error is greater than 10 percentage points.

- Statistic could not be calculated due to fewer than 25 cases during the time period.

Table 15.12  
Cancer of the Lung and Bronchus (Invasive)

5-Year Relative and Period Survival (Percent) by Race, Sex, Diagnosis Year, Stage and Age

	All Races			Whites			Blacks		
	Total	Males	Females	Total	Males	Females	Total	Males	Females
5-Year Relative Survival (Percent)									
Year of Diagnosis:									
1960-1963 <sup>a</sup>	-	-	-	8	7	11	5	5	6
1970-1973 <sup>a</sup>	-	-	-	10	9	14	7	6	10
1975-1977 <sup>b</sup>	12.2	11.1	15.3	12.3	11.1	15.4	11.2	10.5	13.8
1978-1980 <sup>b</sup>	12.8	11.3	16.3	12.9	11.5	16.2	11.7	9.7	17.8
1981-1983 <sup>b</sup>	13.1	11.5	16.4	13.3	11.7	16.6	11.3	10.1	14.9
1984-1986 <sup>b</sup>	12.8	11.2	16.0	13.0	11.2	16.3	11.1	10.3	12.8
1987-1989 <sup>b</sup>	13.0	11.9	15.0	13.3	12.0	15.3	10.9	10.8	11.1
1990-1992 <sup>b</sup>	13.6	12.1	15.9	14.0	12.5	16.2	10.5	9.3	12.7
1993-1995 <sup>b</sup>	14.3	12.5	16.9	14.5	12.6	17.1	12.8	11.2	15.7
1996-1998 <sup>b</sup>	14.6	12.9	16.8	14.8	13.1	17.0	12.3	10.7	15.0
1999-2001 <sup>b</sup>	15.3	13.1	17.9	15.5	13.3	18.0	12.6	10.8	15.2
2003-2006 <sup>b</sup>	16.7	14.5	19.2	17.1	14.8	19.7	13.4	12.7	14.4
2007-2013 <sup>b</sup>	19.5 <sup>f</sup>	16.6 <sup>f</sup>	22.6 <sup>f</sup>	19.6 <sup>f</sup>	16.9 <sup>f</sup>	22.6 <sup>f</sup>	17.3 <sup>f</sup>	14.2 <sup>f</sup>	20.7 <sup>f</sup>
5-Year Period Survival (Percent) <sup>cd</sup>									
2013	18.7	15.6	22.2	18.8	15.7	22.1	16.2	12.9	20.2
Stage Distribution (%) 2007-2013 <sup>ce</sup>									
All Stages									
Number of cases	265,429	139,842	125,587	216,128	112,341	103,787	30,511	16,903	13,608
Percent	100%	100%	100%	100%	100%	100%	100%	100%	100%
Localized	16	14	18	16	15	18	13	12	15
Regional	22	22	22	22	22	22	22	21	23
Distant	57	59	55	56	58	54	61	63	58
Unstaged	5	5	5	5	5	5	4	4	4
5-Year Relative Survival (Percent), 2007-2013 <sup>c</sup>									
Age at Diagnosis:									
Ages <45	32.3	27.9	36.5	33.7	28.9	38.3	27.4	23.6	31.8
Ages 45-54	20.8	16.7	25.4	21.5	17.3	26.1	17.2	13.2	21.9
Ages 55-64	20.1	16.7	24.6	20.3	17.0	24.6	16.6	13.9	20.8
Ages 65-74	19.3	16.0	23.1	19.6	16.3	23.2	15.5	12.2	19.6
Ages 75+	13.5	11.6	15.4	13.8	11.8	15.6	10.3	7.6	12.6
Ages <65	20.9	17.2	25.6	21.3	17.6	25.8	17.3	14.1	21.8
Ages 65+	16.5	13.9	19.1	16.7	14.2	19.2	13.3	10.6	16.3
Stage <sup>e</sup> :									
All Stages	18.1	15.2	21.3	18.3	15.4	21.4	15.3	12.5	18.8
Localized	55.6	49.5	61.0	55.7	49.7	60.9	50.7	43.8	57.5
Regional	28.9	25.6	32.5	28.9	25.8	32.1	25.7	21.9	30.0
Distant	4.5	3.8	5.4	4.3	3.6	5.2	4.3	3.6	5.3
Unstaged	7.5	7.1	7.9	6.8	6.4	7.2	9.4	9.1	9.7

<sup>a</sup> Based on End Results data from a series of hospital registries and one population-based registry.

<sup>b</sup> SEER 9 areas (San Francisco, Connecticut, Detroit, Hawaii, Iowa, New Mexico, Seattle, Utah, Atlanta).

Based on follow-up of patients into 2014.

<sup>c</sup> SEER 18 areas (San Francisco, Connecticut, Detroit, Hawaii, Iowa, New Mexico, Seattle, Utah, Atlanta, San Jose-Monterey, Los Angeles, Alaska Native Registry, Rural Georgia, California excluding SF/SJM/LA, Kentucky, Louisiana, New Jersey and Georgia excluding ATL/RG).

Based on follow-up of patients into 2014.

<sup>d</sup> Period survival provides a 2013 estimate of survival by piecing together the most recent conditional survival estimates from several cohorts. It is computed here using three year calendar blocks (2010-2012: 0-1 year survival), (2009-2011: 1-2 year survival), (2008-2010: 2-3 year survival), (2007-2009: 3-4 year survival), (2006-2008: 4-5 years survival).

<sup>e</sup> Stage at diagnosis is classified using SEER Summary Stage 2000. Stage distribution percentages may not sum to 100 due to rounding.

<sup>f</sup> The difference between 1975-1977 and 2007-2013 is statistically significant ( $p < .05$ ).

<sup>g</sup> The standard error is between 5 and 10 percentage points.

<sup>h</sup> The standard error is greater than 10 percentage points.

- Statistic could not be calculated due to fewer than 25 cases during the time period.

Table 15.13  
Small Cell Cancer of the Lung and Bronchus (Invasive)

5-Year Relative and Period Survival (Percent) by Race, Sex, Diagnosis Year, Stage and Age

	All Races			Whites			Blacks		
	Total	Males	Females	Total	Males	Females	Total	Males	Females
5-Year Relative Survival (Percent)									
Year of Diagnosis:									
1975-1977 <sup>a</sup>	3.6	3.1	4.8	3.7	3.1	4.9	3.7	3.8	3.6
1978-1980 <sup>a</sup>	4.2	3.2	6.5	4.3	3.3	6.4	3.1	2.4	5.0
1981-1983 <sup>a</sup>	4.5	3.5	6.2	4.6	3.6	6.1	5.0	3.7	8.2
1984-1986 <sup>a</sup>	4.5	3.5	6.2	4.7	3.6	6.4	3.5	2.2	5.6
1987-1989 <sup>a</sup>	5.1	3.9	6.6	5.1	3.9	6.8	4.0	3.3	5.1
1990-1992 <sup>a</sup>	5.4	4.5	6.4	5.4	4.5	6.6	4.2	3.9	4.4
1993-1995 <sup>a</sup>	6.4	5.1	7.9	6.3	5.0	7.6	6.7	4.0	10.4
1996-1998 <sup>a</sup>	5.8	5.2	6.5	6.0	5.4	6.7	3.6	2.6	4.5
1999-2001 <sup>a</sup>	5.7	4.8	6.7	5.6	4.4	6.9	5.2	6.0	4.2
2003-2006 <sup>a</sup>	6.5	4.9	8.1	6.5	4.7	8.3	5.2	5.0	5.4
2007-2013 <sup>a</sup>	7.0 <sup>e</sup>	5.7 <sup>e</sup>	8.2 <sup>e</sup>	6.8 <sup>e</sup>	5.7 <sup>e</sup>	7.9 <sup>e</sup>	7.8 <sup>e</sup>	5.4 <sup>e</sup>	9.9
5-Year Period Survival (Percent) <sup>bc</sup>									
2013	6.3	5.0	7.5	6.2	4.9	7.5	6.8	5.4	8.2
Stage Distribution (%) 2007-2013 <sup>bd</sup>									
All Stages									
Number of cases	34,414	17,267	17,147	29,825	14,753	15,072	3,087	1,565	1,522
Percent	100%	100%	100%	100%	100%	100%	100%	100%	100%
Localized	4	4	4	4	4	4	4	4	3
Regional	20	18	22	20	18	22	20	18	23
Distant	74	76	72	74	76	72	75	77	72
Unstaged	2	2	2	2	2	2	2	2	2
5-Year Relative Survival (Percent), 2007-2013 <sup>b</sup>									
Age at Diagnosis:									
Ages <45	11.9	12.0	11.7	11.7	11.9	11.6	8.9	-	0.0
Ages 45-54	9.1	7.0	11.3	9.0	6.5	11.4	10.4	8.7	12.3
Ages 55-64	8.2	6.3	10.3	8.0	6.2	9.9	8.9	5.6	12.1
Ages 65-74	6.1	4.8	7.4	6.1	4.7	7.4	5.4	4.5	6.2
Ages 75+	3.4	3.0	3.7	3.4	3.0	3.7	3.9	3.2	4.3
Ages <65	8.6	6.7	10.6	8.4	6.4	10.4	9.3	6.7	12.1
Ages 65+	5.0	4.1	5.8	5.0	4.1	5.9	4.8	4.1	5.4
Stage <sup>d</sup> :									
All Stages	6.5	5.2	7.8	6.4	5.1	7.7	7.1	5.5	8.7
Localized	28.9	25.0	32.7	28.9	24.7	32.6	30.4 <sup>f</sup>	28.5 <sup>f</sup>	32.4 <sup>f</sup>
Regional	15.3	13.3	17.0	15.3	13.1	17.0	14.8	11.9	17.1
Distant	2.9	2.2	3.6	2.8	2.2	3.4	3.9	2.8	5.0
Unstaged	7.6	6.2	8.9	6.9	5.0	8.6	8.5	6.6 <sup>f</sup>	9.0 <sup>f</sup>

Note: Small Cell Cancer of the Lung and Bronchus includes histologies 8002, 8041-8045.

<sup>a</sup> SEER 9 areas (San Francisco, Connecticut, Detroit, Hawaii, Iowa, New Mexico, Seattle, Utah, Atlanta).

Based on follow-up of patients into 2014.

<sup>b</sup> SEER 18 areas (San Francisco, Connecticut, Detroit, Hawaii, Iowa, New Mexico, Seattle, Utah, Atlanta, San Jose-Monterey, Los Angeles, Alaska Native Registry, Rural Georgia, California excluding SF/SJM/LA, Kentucky, Louisiana, New Jersey and Georgia excluding ATL/RG).

Based on follow-up of patients into 2014.

<sup>c</sup> Period survival provides a 2013 estimate of survival by piecing together the most recent conditional survival estimates from several cohorts. It is computed here using three year calendar blocks (2010-2012: 0-1 year survival), (2009-2011: 1-2 year survival), (2008-2010: 2-3 year survival), (2007-2009: 3-4 year survival), (2006-2008: 4-5 years survival).

<sup>d</sup> Stage at diagnosis is classified using SEER Summary Stage 2000. Stage distribution percentages may not sum to 100 due to rounding.

<sup>e</sup> The difference between 1975-1977 and 2007-2013 is statistically significant ( $p < .05$ ).

<sup>f</sup> The standard error is between 5 and 10 percentage points.

<sup>g</sup> The standard error is greater than 10 percentage points.

- Statistic could not be calculated due to fewer than 25 cases during the time period.

Table 15.14  
Non-Small Cell Cancer of the Lung and Bronchus (Invasive)

5-Year Relative and Period Survival (Percent) by Race, Sex, Diagnosis Year, Stage and Age

	All Races			Whites			Blacks		
	Total	Males	Females	Total	Males	Females	Total	Males	Females
5-Year Relative Survival (Percent)									
Year of Diagnosis:									
1975-1977 <sup>a</sup>	16.4	14.8	21.0	16.7	15.0	21.4	13.4	12.4	17.7
1978-1980 <sup>a</sup>	16.7	14.8	21.4	17.0	15.2	21.5	14.2	11.6	22.8
1981-1983 <sup>a</sup>	17.1	15.0	21.8	17.5	15.4	22.1	13.9	12.2	19.2
1984-1986 <sup>a</sup>	16.6	14.4	21.0	17.0	14.7	21.5	13.1	11.9	16.4
1987-1989 <sup>a</sup>	16.9	15.2	19.8	17.4	15.5	20.6	13.2	12.9	14.0
1990-1992 <sup>a</sup>	17.7	15.5	21.1	18.3	16.2	21.7	12.8	11.1	16.2
1993-1995 <sup>a</sup>	18.7	16.1	22.5	19.3	16.5	23.2	15.1	13.3	18.5
1996-1998 <sup>a</sup>	19.4	16.7	22.9	19.9	17.1	23.5	15.3	12.8	19.4
1999-2001 <sup>a</sup>	20.0	16.8	24.0	20.7	17.5	24.6	14.7	12.0	18.6
2003-2006 <sup>a</sup>	20.2	17.4	23.6	21.2	18.1	24.7	15.1	13.9	16.7
2007-2013 <sup>a</sup>	23.6 <sup>e</sup>	19.9 <sup>e</sup>	27.8 <sup>e</sup>	24.2 <sup>e</sup>	20.5 <sup>e</sup>	28.3 <sup>e</sup>	19.8 <sup>e</sup>	16.1 <sup>e</sup>	24.0 <sup>e</sup>
5-Year Period Survival (Percent) <sup>bc</sup>									
2013	22.9	18.8	27.5	23.3	19.3	27.8	18.6	14.7	23.4
Stage Distribution (%) 2007-2013 <sup>bd</sup>									
All Stages									
Number of cases	199,153	106,453	92,700	159,653	84,377	75,276	24,179	13,518	10,661
Percent	100%	100%	100%	100%	100%	100%	100%	100%	100%
Localized	19	16	22	20	17	23	15	13	17
Regional	24	24	24	24	25	24	24	23	25
Distant	55	57	53	54	56	51	59	62	56
Unstaged	2	2	2	2	2	2	2	2	2
5-Year Relative Survival (Percent), 2007-2013 <sup>b</sup>									
Age at Diagnosis:									
Ages <45	34.1	28.9	39.0	36.1	30.2	41.5	28.4	24.4	33.2
Ages 45-54	23.4	18.6	28.7	24.6	19.6	29.9	18.2	13.8	23.3
Ages 55-64	23.5	19.3	29.0	24.2	20.0	29.6	18.1	15.1	22.8
Ages 65-74	23.3	19.3	28.1	23.8	19.8	28.4	18.0	14.0	23.0
Ages 75+	18.2	15.2	21.2	18.6	15.5	21.7	13.6	10.1	16.9
Ages <65	24.0	19.6	29.5	24.9	20.4	30.4	18.7	15.1	23.6
Ages 65+	20.9	17.4	24.7	21.4	17.8	25.1	16.3	12.7	20.4
Stage <sup>d</sup> :									
All Stages	22.1	18.3	26.5	22.6	18.8	26.9	17.5	14.0	21.9
Localized	59.5	53.0	65.2	59.7	53.3	65.1	54.0	46.6	61.1
Regional	32.3	28.2	37.2	32.5	28.6	37.0	28.1	23.7	33.2
Distant	5.2	4.3	6.3	5.0	4.1	6.2	4.5	3.6	5.7
Unstaged	13.4	12.2	14.7	12.6	11.1	14.2	11.9	12.0	12.1

Note: Non-Small Cell Cancer of the Lung and Bronchus includes histologies 8003-8004, 8012-8015, 8021-8022, 8030-8035, 8046, 8050-8052, 8070-8076, 8078, 8082-8084, 8090, 8094, 8120, 8123, 8140-8141, 8143-8145, 8147, 8190, 8200-8201, 8211, 8240-8241, 8243-8246, 8249-8255, 8260, 8290, 8310, 8320, 8323, 8333, 8401, 8430, 8440, 8470-8471, 8480-8481, 8490, 8503, 8507, 8525, 8550, 8560, 8562, 8570-8572, 8574-8576.

<sup>a</sup> SEER 9 areas (San Francisco, Connecticut, Detroit, Hawaii, Iowa, New Mexico, Seattle, Utah, Atlanta).

Based on follow-up of patients into 2014.

<sup>b</sup> SEER 18 areas (San Francisco, Connecticut, Detroit, Hawaii, Iowa, New Mexico, Seattle, Utah, Atlanta, San Jose-Monterey, Los Angeles, Alaska Native Registry, Rural Georgia, California excluding SF/SJM/LA, Kentucky, Louisiana, New Jersey and Georgia excluding ATL/RG).

Based on follow-up of patients into 2014.

<sup>c</sup> Period survival provides a 2013 estimate of survival by piecing together the most recent conditional survival estimates from several cohorts. It is computed here using three year calendar blocks (2010-2012: 0-1 year survival), (2009-2011: 1-2 year survival), (2008-2010: 2-3 year survival), (2007-2009: 3-4 year survival), (2006-2008: 4-5 years survival).

<sup>d</sup> Stage at diagnosis is classified using SEER Summary Stage 2000. Stage distribution percentages may not sum to 100 due to rounding.

<sup>e</sup> The difference between 1975-1977 and 2007-2013 is statistically significant ( $p < .05$ ).

<sup>f</sup> The standard error is between 5 and 10 percentage points.

<sup>g</sup> The standard error is greater than 10 percentage points.

- Statistic could not be calculated due to fewer than 25 cases during the time period.

Table 16.8  
Melanoma of the Skin (Invasive)

5-Year Relative and Period Survival (Percent) by Race, Sex, Diagnosis Year, Stage and Age

	All Races			Whites			Blacks		
	Total	Males	Females	Total	Males	Females	Total	Males	Females
5-Year Relative Survival (Percent)									
Year of Diagnosis:									
1960-1963 <sup>a</sup>	-	-	-	60	51	68	-	-	-
1970-1973 <sup>a</sup>	-	-	-	68	62	75	-	-	-
1975-1977 <sup>b</sup>	81.9	77.5	86.3	82.0	77.7	86.2	56.7 <sup>g</sup>	-	-
1978-1980 <sup>b</sup>	82.8	77.7	87.7	82.9	77.9	87.9	59.8 <sup>h</sup>	-	-
1981-1983 <sup>b</sup>	82.8	78.4	87.3	82.7	78.4	87.2	61.9 <sup>g</sup>	-	-
1984-1986 <sup>b</sup>	86.6	82.6	91.0	86.4	82.2	91.0	72.3 <sup>h</sup>	-	-
1987-1989 <sup>b</sup>	88.1	84.9	91.5	87.9	84.9	91.3	78.6 <sup>g</sup>	-	89.5 <sup>g</sup>
1990-1992 <sup>b</sup>	89.2	87.0	91.8	89.3	87.1	91.8	59.6 <sup>g</sup>	-	-
1993-1995 <sup>b</sup>	89.7	87.3	92.6	89.6	87.1	92.6	69.5 <sup>g</sup>	66.6 <sup>g</sup>	-
1996-1998 <sup>b</sup>	91.0	89.5	92.7	90.9	89.3	92.7	73.9 <sup>g</sup>	68.0 <sup>h</sup>	78.6 <sup>g</sup>
1999-2001 <sup>b</sup>	92.2	90.1	94.6	92.2	90.2	94.6	73.2 <sup>g</sup>	69.6 <sup>g</sup>	76.1 <sup>g</sup>
2003-2006 <sup>b</sup>	93.1	91.3	95.2	93.2	91.4	95.4	72.9 <sup>g</sup>	70.0 <sup>g</sup>	74.5 <sup>g</sup>
2007-2013 <sup>b</sup>	93.6 <sup>f</sup>	92.0 <sup>f</sup>	95.7 <sup>f</sup>	93.6 <sup>f</sup>	91.9 <sup>f</sup>	95.7 <sup>f</sup>	69.0 <sup>g</sup>	59.5 <sup>g</sup>	74.9 <sup>g</sup>
5-Year Period Survival (Percent) <sup>cd</sup>									
2013	91.8	89.9	94.2	91.3	89.2	93.9	56.8	48.4	61.6
Stage Distribution (%) 2007-2013 <sup>ce</sup>									
All Stages									
Number of cases	99,169	55,971	43,198	92,350	52,435	39,915	464	199	265
Percent	100%	100%	100%	100%	100%	100%	100%	100%	100%
Localized	84	82	86	83	81	86	53	45	60
Regional	9	10	7	9	10	8	26	32	21
Distant	4	5	3	4	5	3	16	16	15
Unstaged	3	3	4	3	3	3	5	8	3
5-Year Relative Survival (Percent), 2007-2013 <sup>c</sup>									
Age at Diagnosis:									
Ages <45	94.4	90.8	96.8	94.2	90.4	96.7	78.7 <sup>g</sup>	68.2 <sup>h</sup>	84.4 <sup>g</sup>
Ages 45-54	92.9	90.5	95.6	92.6	89.9	95.5	65.0 <sup>g</sup>	61.6 <sup>g</sup>	68.4 <sup>g</sup>
Ages 55-64	91.5	89.8	94.2	91.0	89.2	93.9	65.7 <sup>g</sup>	56.3 <sup>g</sup>	75.2 <sup>g</sup>
Ages 65-74	91.9	90.6	94.3	91.5	90.1	94.1	60.5 <sup>g</sup>	58.2 <sup>h</sup>	61.3 <sup>g</sup>
Ages 75+	86.7	86.4	87.2	85.8	85.4	86.4	50.0 <sup>g</sup>	32.6 <sup>h</sup>	55.6 <sup>g</sup>
Ages <65	92.8	90.2	95.7	92.5	89.7	95.5	69.8	61.7 <sup>g</sup>	76.4
Ages 65+	89.6	88.8	90.8	88.9	88.1	90.4	55.9 <sup>g</sup>	49.0 <sup>g</sup>	59.0 <sup>g</sup>
Stage <sup>e</sup> :									
All Stages	91.7	89.7	94.2	91.2	89.1	94.0	64.6	57.9	68.7
Localized	98.5	97.9	99.2	98.1	97.4	99.0	86.4	90.3 <sup>g</sup>	83.5
Regional	62.9	60.1	67.7	63.2	60.4	68.0	46.4 <sup>g</sup>	37.2 <sup>g</sup>	54.6 <sup>g</sup>
Distant	19.9	18.3	23.5	19.8	18.3	23.0	20.0 <sup>g</sup>	10.7 <sup>g</sup>	30.1 <sup>g</sup>
Unstaged	82.6	80.4	85.3	81.6	79.1	84.8	-	-	-

<sup>a</sup> Based on End Results data from a series of hospital registries and one population-based registry.

<sup>b</sup> SEER 9 areas (San Francisco, Connecticut, Detroit, Hawaii, Iowa, New Mexico, Seattle, Utah, Atlanta).

Based on follow-up of patients into 2014.

<sup>c</sup> SEER 18 areas (San Francisco, Connecticut, Detroit, Hawaii, Iowa, New Mexico, Seattle, Utah, Atlanta, San Jose-Monterey, Los Angeles, Alaska Native Registry, Rural Georgia, California excluding SF/SJM/LA, Kentucky, Louisiana, New Jersey and Georgia excluding ATL/RG).

Based on follow-up of patients into 2014.

<sup>d</sup> Period survival provides a 2013 estimate of survival by piecing together the most recent conditional survival estimates from several cohorts. It is computed here using three year calendar blocks (2010-2012: 0-1 year survival), (2009-2011: 1-2 year survival), (2008-2010: 2-3 year survival), (2007-2009: 3-4 year survival), (2006-2008: 4-5 years survival).

<sup>e</sup> Stage at diagnosis is classified using SEER Summary Stage 2000. Stage distribution percentages may not sum to 100 due to rounding.

<sup>f</sup> The difference between 1975-1977 and 2007-2013 is statistically significant (p<.05).

<sup>g</sup> The standard error is between 5 and 10 percentage points.

<sup>h</sup> The standard error is greater than 10 percentage points.

- Statistic could not be calculated due to fewer than 25 cases during the time period.

Table 17.4  
Mesothelioma

5-Year Relative and Period Survival (Percent) by Race, Sex, Diagnosis Year, Stage and Age

	All Races			Whites			Blacks		
	Total	Males	Females	Total	Males	Females	Total	Males	Females
5-Year Relative Survival (Percent)									
Year of Diagnosis:									
1960-1963 <sup>a</sup>	-	-	-	-	-	-	-	-	-
1970-1973 <sup>a</sup>	-	-	-	-	-	-	-	-	-
1975-1977 <sup>b</sup>	9.7	3.0	26.7	10.4	3.3	27.4 <sup>f</sup>	-	-	-
1978-1980 <sup>b</sup>	6.0	5.5	8.1	5.9	5.2	8.7	-	-	-
1981-1983 <sup>b</sup>	7.7	5.3	15.1	8.1	5.4	16.2	-	-	-
1984-1986 <sup>b</sup>	6.6	4.3	13.9	6.1	3.7	14.1	-	-	-
1987-1989 <sup>b</sup>	6.2	4.6	12.2	6.3	4.8	12.1	4.8	-	-
1990-1992 <sup>b</sup>	7.7	4.2	20.6	7.4	4.1	20.1	10.2 <sup>f</sup>	8.5 <sup>f</sup>	-
1993-1995 <sup>b</sup>	6.5	3.2	18.7	5.9	2.8	18.0	9.0	8.0 <sup>f</sup>	-
1996-1998 <sup>b</sup>	9.8	8.2	15.2	9.8	8.0	16.2	11.4 <sup>f</sup>	-	-
1999-2001 <sup>b</sup>	7.6	5.3	15.9	6.7	5.0	13.1	-	-	-
2003-2006 <sup>b</sup>	8.4	5.7	16.4	8.4	5.5	17.5	5.9	5.6 <sup>f</sup>	-
2007-2013 <sup>b</sup>	9.1	6.8 <sup>e</sup>	16.6	9.0	6.7 <sup>e</sup>	16.5	10.7	3.8	-
5-Year Period Survival (Percent) <sup>cd</sup>									
2013	8.7	6.8	14.4	8.7	7.0	13.6	10.0	3.6	30.1
5-Year Relative Survival (Percent), 2007-2013 <sup>c</sup>									
Age at Diagnosis:									
Ages <45	44.6	34.8 <sup>f</sup>	54.1 <sup>f</sup>	42.6 <sup>f</sup>	35.1 <sup>f</sup>	51.9 <sup>f</sup>	-	-	-
Ages 45-54	21.0	17.3	27.5	21.5	18.4	27.2 <sup>f</sup>	20.1 <sup>f</sup>	-	-
Ages 55-64	12.3	10.4	17.6	12.5	10.2	19.0	8.2 <sup>f</sup>	9.8 <sup>f</sup>	-
Ages 65-74	8.1	6.6	13.0	8.2	6.9	12.2	9.6	5.8	-
Ages 75+	3.5	2.9	5.2	3.3	2.6	5.6	5.5	5.8	-
Ages <65	17.7	13.6	26.5	17.5	13.7	26.1	20.6	12.9 <sup>f</sup>	32.6 <sup>f</sup>
Ages 65+	5.4	4.5	8.3	5.3	4.4	8.2	7.5	5.7	13.3 <sup>f</sup>

<sup>a</sup> Based on End Results data from a series of hospital registries and one population-based registry.  
<sup>b</sup> SEER 9 areas (San Francisco, Connecticut, Detroit, Hawaii, Iowa, New Mexico, Seattle, Utah, Atlanta).  
Based on follow-up of patients into 2014.  
<sup>c</sup> SEER 18 areas (San Francisco, Connecticut, Detroit, Hawaii, Iowa, New Mexico, Seattle, Utah, Atlanta, San Jose-Monterey, Los Angeles, Alaska Native Registry, Rural Georgia, California excluding SF/SJM/LA, Kentucky, Louisiana, New Jersey and Georgia excluding ATL/RG).  
Based on follow-up of patients into 2014.  
<sup>d</sup> Period survival provides a 2013 estimate of survival by piecing together the most recent conditional survival estimates from several cohorts. It is computed here using three year calendar blocks (2010-2012: 0-1 year survival), (2009-2011: 1-2 year survival), (2008-2010: 2-3 year survival), (2007-2009: 3-4 year survival), (2006-2008: 4-5 years survival).  
The difference between 1975-1977 and 2007-2013 is statistically significant (p<.05).  
<sup>e</sup> The standard error is between 5 and 10 percentage points.  
<sup>f</sup> The standard error is greater than 10 percentage points.  
- Statistic could not be calculated due to fewer than 25 cases during the time period.

Table 18.8  
Myeloma

5-Year Relative and Period Survival (Percent) by Race, Sex, Diagnosis Year and Age

	All Races			Whites			Blacks		
	Total	Males	Females	Total	Males	Females	Total	Males	Females
5-Year Relative Survival (Percent)									
Year of Diagnosis:									
1960-1963 <sup>a</sup>	-	-	-	12	13	10	-	-	-
1970-1973 <sup>a</sup>	-	-	-	19	20	17	-	-	-
1975-1977 <sup>b</sup>	24.6	23.9	25.3	24.1	23.6	24.7	29.3	28.9	29.5
1978-1980 <sup>b</sup>	25.9	24.4	27.5	24.8	24.1	25.5	32.5	27.4	37.5
1981-1983 <sup>b</sup>	27.5	25.7	29.4	27.2	25.4	28.9	28.9	29.6	27.9
1984-1986 <sup>b</sup>	27.3	27.7	26.9	26.0	25.8	26.2	31.8	33.3	30.3
1987-1989 <sup>b</sup>	27.2	28.9	25.5	26.9	29.1	24.5	30.0	29.7	30.3
1990-1992 <sup>b</sup>	29.3	30.5	27.9	28.4	29.6	26.9	34.2	38.0	30.6
1993-1995 <sup>b</sup>	31.6	32.2	31.0	30.5	31.3	29.5	35.4	34.9	35.7
1996-1998 <sup>b</sup>	32.5	34.5	30.3	32.2	34.3	29.9	31.4	32.8	30.4
1999-2001 <sup>b</sup>	34.5	36.8	31.9	34.5	36.8	31.5	34.1	36.7	32.0
2003-2006 <sup>b</sup>	44.0	44.9	42.9	44.3	46.2	42.0	44.4	42.2	46.3
2007-2013 <sup>b</sup>	51.0 <sup>f</sup>	50.4 <sup>f</sup>	51.8 <sup>f</sup>	50.6 <sup>f</sup>	50.1 <sup>f</sup>	51.1 <sup>f</sup>	52.3 <sup>f</sup>	50.5 <sup>f</sup>	54.0 <sup>f</sup>
5-Year Period Survival (Percent) <sup>cd</sup>									
2013	50.8	50.6	51.0	50.2	50.2	50.2	52.3	52.7	52.0
Stage Distribution (%) 2007-2013 <sup>ce</sup>									
All Stages									
Number of cases	31,693	17,422	14,271	22,950	13,078	9,872	6,423	3,104	3,319
Percent	100%	100%	100%	100%	100%	100%	100%	100%	100%
Localized	5	6	4	5	6	5	4	4	3
Regional	0	0	0	0	0	0	0	0	0
Distant	95	94	96	95	94	95	96	96	97
Unstaged	0	0	0	0	0	0	0	0	0
5-Year Relative Survival (Percent), 2007-2013 <sup>c</sup>									
Age at Diagnosis:									
Ages <45	74.5	71.3	79.4	74.6	71.5	79.8	72.3	69.0	76.0
Ages 45-54	65.1	64.0	66.5	66.6	65.3	68.4	60.2	57.4	63.0
Ages 55-64	58.9	58.3	59.6	59.7	60.0	59.2	56.8	53.9	60.0
Ages 65-74	48.7	48.1	49.5	49.0	48.3	49.9	47.0	46.2	47.7
Ages 75+	30.3	29.7	30.9	30.2	29.5	30.9	29.3	30.8	28.4
Ages <65	62.4	61.4	63.7	63.2	62.7	64.0	59.7	56.8	62.7
Ages 65+	39.5	39.5	39.6	39.3	39.2	39.5	39.5	40.6	38.6
Stage <sup>e</sup> :									
All Stages	49.6	49.6	49.5	49.2	49.6	48.7	50.2	49.7	50.7
Localized	71.0	71.9	69.3	71.6	72.8	69.4	64.1	65.2 <sup>g</sup>	62.4 <sup>g</sup>
Regional	-	-	-	-	-	-	-	-	-
Distant	48.4	48.3	48.6	47.9	48.1	47.8	49.7	48.9	50.3
Unstaged	-	-	-	-	-	-	-	-	-

<sup>a</sup> Based on End Results data from a series of hospital registries and one population-based registry.<sup>b</sup> SEER 9 areas (San Francisco, Connecticut, Detroit, Hawaii, Iowa, New Mexico, Seattle, Utah, Atlanta).

Based on follow-up of patients into 2014.

<sup>c</sup> SEER 18 areas (San Francisco, Connecticut, Detroit, Hawaii, Iowa, New Mexico, Seattle, Utah, Atlanta, San Jose-Monterey, Los Angeles, Alaska Native Registry, Rural Georgia, California excluding SF/SJM/LA, Kentucky, Louisiana, New Jersey and Georgia excluding ATL/RG).

Based on follow-up of patients into 2014.

<sup>d</sup> Period survival provides a 2013 estimate of survival by piecing together the most recent conditional survival estimates from several cohorts. It is computed here using three year calendar blocks (2010-2012: 0-1 year survival), (2009-2011: 1-2 year survival), (2008-2010: 2-3 year survival), (2007-2009: 3-4 year survival), (2006-2008: 4-5 years survival).<sup>e</sup> Stage at diagnosis is classified using SEER Summary Stage 2000. Stage distribution percentages may not sum to 100 due to rounding.<sup>f</sup> The difference between 1975-1977 and 2007-2013 is statistically significant (p<.05).<sup>g</sup> The standard error is between 5 and 10 percentage points.<sup>h</sup> The standard error is greater than 10 percentage points.

- Statistic could not be calculated due to fewer than 25 cases during the time period.

Table 19.8  
Non-Hodgkin Lymphoma

5-Year Relative and Period Survival (Percent) by Race, Sex, Diagnosis Year and Age

	All Races			Whites			Blacks		
	Total	Males	Females	Total	Males	Females	Total	Males	Females
5-Year Relative Survival (Percent)									
Year of Diagnosis:									
1960-1963 <sup>a</sup>	-	-	-	31	31	31	-	-	-
1970-1973 <sup>a</sup>	-	-	-	41	39	43	-	-	-
1975-1977 <sup>b</sup>	46.5	45.6	47.5	46.8	46.3	47.3	48.6	42.6	55.3 <sup>g</sup>
1978-1980 <sup>b</sup>	47.9	46.1	49.8	47.9	46.2	49.5	51.3	47.3	56.7
1981-1983 <sup>b</sup>	50.6	50.3	50.9	50.8	50.5	51.1	49.5	49.2	49.8
1984-1986 <sup>b</sup>	51.6	50.1	53.3	52.0	50.6	53.6	46.8	44.5	49.9
1987-1989 <sup>b</sup>	50.9	47.6	54.9	51.3	48.1	55.2	45.7	41.3	51.0
1990-1992 <sup>b</sup>	50.7	46.7	55.7	51.5	47.6	56.4	42.2	38.2	47.7
1993-1995 <sup>b</sup>	52.5	48.7	57.5	53.2	49.7	57.7	42.1	35.7	54.0
1996-1998 <sup>b</sup>	58.8	57.0	61.0	59.4	57.6	61.5	54.6	53.0	57.0
1999-2001 <sup>b</sup>	63.9	61.4	66.9	64.9	62.8	67.5	55.7	49.0	63.7
2003-2006 <sup>b</sup>	70.3	68.9	71.9	71.6	70.7	72.8	62.4	58.1	67.6
2007-2013 <sup>b</sup>	73.3 <sup>f</sup>	72.5 <sup>f</sup>	74.3 <sup>f</sup>	74.2 <sup>f</sup>	73.5 <sup>f</sup>	75.1 <sup>f</sup>	67.1 <sup>f</sup>	63.5 <sup>f</sup>	71.0 <sup>f</sup>
5-Year Period Survival (Percent) <sup>cd</sup>									
2013	71.4	69.8	73.3	71.8	70.4	73.5	65.9	61.6	70.8
Stage Distribution (%) 2007-2013 <sup>ce</sup>									
All Stages									
Number of cases	95,444	51,995	43,449	78,911	43,105	35,806	7,881	4,194	3,687
Percent	100%	100%	100%	100%	100%	100%	100%	100%	100%
Localized	28	26	29	27	26	29	28	25	31
Regional	15	15	15	15	15	15	15	14	15
Distant	50	51	48	50	52	49	51	55	47
Unstaged	8	7	8	7	7	8	6	6	7
5-Year Relative Survival (Percent), 2007-2013 <sup>c</sup>									
Age at Diagnosis:									
Ages <45	82.5	80.1	86.1	84.1	81.7	87.8	71.3	68.2	75.9
Ages 45-54	79.9	76.6	84.8	81.6	78.6	86.1	66.6	61.4	74.1
Ages 55-64	76.3	73.7	79.7	77.4	75.0	80.6	65.1	59.7	71.9
Ages 65-74	70.7	68.3	73.3	71.2	68.8	74.0	64.6	58.6	69.3
Ages 75+	55.0	52.8	56.8	55.4	52.8	57.5	50.2	44.7	52.5
Ages <65	79.0	76.3	82.8	80.3	77.8	83.9	67.9	63.4	74.0
Ages 65+	62.4	60.8	63.9	62.7	60.9	64.5	58.4	53.5	61.5
Stage <sup>e</sup> :									
All Stages	71.0	69.5	72.7	71.4	70.0	73.0	65.1	61.3	69.4
Localized	82.9	82.3	83.5	83.0	82.6	83.5	80.0	75.6	83.9
Regional	75.0	74.5	75.4	75.5	75.1	75.9	70.4	69.5	71.0
Distant	63.4	61.9	65.4	64.4	62.8	66.4	55.9	53.0	59.7
Unstaged	69.2	66.6	72.0	67.7	65.0	70.6	61.9	57.6	66.0

<sup>a</sup> Based on End Results data from a series of hospital registries and one population-based registry.

<sup>b</sup> SEER 9 areas (San Francisco, Connecticut, Detroit, Hawaii, Iowa, New Mexico, Seattle, Utah, Atlanta).

Based on follow-up of patients into 2014.

<sup>c</sup> SEER 18 areas (San Francisco, Connecticut, Detroit, Hawaii, Iowa, New Mexico, Seattle, Utah, Atlanta, San Jose-Monterey, Los Angeles, Alaska Native Registry, Rural Georgia, California excluding SF/SJM/LA, Kentucky, Louisiana, New Jersey and Georgia excluding ATL/RG).

Based on follow-up of patients into 2014.

<sup>d</sup> Period survival provides a 2013 estimate of survival by piecing together the most recent conditional survival estimates from several cohorts. It is computed here using three year calendar blocks (2010-2012: 0-1 year survival), (2009-2011: 1-2 year survival), (2008-2010: 2-3 year survival), (2007-2009: 3-4 year survival), (2006-2008: 4-5 years survival).

<sup>e</sup> Stage at diagnosis is classified using SEER Summary Stage 2000. Stage distribution percentages may not sum to 100 due to rounding.

<sup>f</sup> The difference between 1975-1977 and 2007-2013 is statistically significant (p<.05).

<sup>g</sup> The standard error is between 5 and 10 percentage points.

<sup>h</sup> The standard error is greater than 10 percentage points.

- Statistic could not be calculated due to fewer than 25 cases during the time period.



Table 20.10  
Cancer of the Oral Cavity and Pharynx (Invasive)

5-Year Relative and Period Survival (Percent) by Race, Sex, Diagnosis Year, Stage and Age

	All Races			Whites			Blacks		
	Total	Males	Females	Total	Males	Females	Total	Males	Females
5-Year Relative Survival (Percent)									
Year of Diagnosis:									
1960-1963 <sup>a</sup>	-	-	-	45	-	-	-	-	-
1970-1973 <sup>a</sup>	-	-	-	43	-	-	-	-	-
1975-1977 <sup>b</sup>	52.5	51.6	54.8	54.0	53.8	54.7	36.0	29.7	49.0
1978-1980 <sup>b</sup>	53.3	51.8	56.5	55.4	54.4	57.3	34.9	29.8	45.8
1981-1983 <sup>b</sup>	51.7	50.1	55.1	54.0	52.9	56.5	30.9	25.4	45.6
1984-1986 <sup>b</sup>	54.1	51.6	59.0	56.3	54.8	59.4	35.0	29.5	49.1
1987-1989 <sup>b</sup>	53.5	51.1	58.7	55.9	54.1	59.7	34.0	30.0	44.2
1990-1992 <sup>b</sup>	55.4	53.1	60.1	57.9	56.4	60.9	33.0	28.2	46.0
1993-1995 <sup>b</sup>	57.7	56.2	60.5	60.1	59.4	61.3	37.9	33.0	50.5
1996-1998 <sup>b</sup>	57.8	56.2	61.0	59.9	59.1	61.4	36.1	31.2	49.1
1999-2001 <sup>b</sup>	60.3	59.2	62.6	62.2	62.0	62.8	44.6	39.4	57.1
2003-2006 <sup>b</sup>	64.1	63.5	65.6	66.1	66.0	66.3	45.1	40.7	54.4
2007-2013 <sup>b</sup>	67.5 <sup>f</sup>	66.7 <sup>f</sup>	69.5 <sup>f</sup>	69.2 <sup>f</sup>	68.7 <sup>f</sup>	70.5 <sup>f</sup>	49.3 <sup>f</sup>	47.0 <sup>f</sup>	54.3
5-Year Period Survival (Percent) <sup>cd</sup>									
2013	65.0	63.9	68.1	66.6	65.8	68.6	49.1	45.8	56.9
Stage Distribution (%) 2007-2013 <sup>ce</sup>									
All Stages									
Number of cases	55,105	39,364	15,741	45,139	32,585	12,554	5,059	3,523	1,536
Percent	100%	100%	100%	100%	100%	100%	100%	100%	100%
Localized	30	25	42	31	26	43	19	14	30
Regional	47	51	38	48	51	38	49	52	41
Distant	19	20	16	17	19	14	29	31	25
Unstaged	4	4	5	4	4	5	3	3	4
5-Year Relative Survival (Percent), 2007-2013 <sup>c</sup>									
Age at Diagnosis:									
Ages <45	79.8	77.1	84.3	81.0	78.5	85.3	71.1	65.7	77.7
Ages 45-54	69.7	68.9	72.5	72.4	71.5	75.5	48.6	47.4	51.3
Ages 55-64	65.8	64.6	70.1	68.1	66.9	72.1	45.3	43.9	49.5
Ages 65-74	60.1	58.3	64.6	61.7	60.2	65.4	43.1	39.0	53.0
Ages 75+	50.4	49.6	51.3	50.9	50.7	51.2	32.0	25.0	40.4 <sup>g</sup>
Ages <65	69.4	67.7	74.2	71.3	69.9	76.0	50.9	48.1	57.6
Ages 65+	55.9	55.1	57.4	57.0	56.6	57.7	40.0	35.7	48.1
Stage <sup>e</sup> :									
All Stages	64.5	63.6	66.8	65.9	65.4	67.4	48.0	45.1	54.7
Localized	83.7	82.5	85.4	83.5	82.6	85.0	80.4	76.2	84.8
Regional	64.2	65.3	60.6	65.7	67.1	61.1	46.8	46.4	47.7
Distant	38.5	38.6	38.1	39.2	39.8	37.2	28.9	27.8	31.9
Unstaged	47.9	47.8	48.1	46.8	46.8	46.6	39.5	43.9 <sup>g</sup>	31.1 <sup>g</sup>

<sup>a</sup> Based on End Results data from a series of hospital registries and one population-based registry.

<sup>b</sup> SEER 9 areas (San Francisco, Connecticut, Detroit, Hawaii, Iowa, New Mexico, Seattle, Utah, Atlanta).

Based on follow-up of patients into 2014.

<sup>c</sup> SEER 18 areas (San Francisco, Connecticut, Detroit, Hawaii, Iowa, New Mexico, Seattle, Utah, Atlanta, San Jose-Monterey, Los Angeles, Alaska Native Registry, Rural Georgia, California excluding SF/SJM/LA, Kentucky, Louisiana, New Jersey and Georgia excluding ATL/RG).

Based on follow-up of patients into 2014.

<sup>d</sup> Period survival provides a 2013 estimate of survival by piecing together the most recent conditional survival estimates from several cohorts. It is computed here using three year calendar blocks (2010-2012: 0-1 year survival), (2009-2011: 1-2 year survival), (2008-2010: 2-3 year survival), (2007-2009: 3-4 year survival), (2006-2008: 4-5 years survival).

<sup>e</sup> Stage at diagnosis is classified using SEER Summary Stage 2000. Stage distribution percentages may not sum to 100 due to rounding.

<sup>f</sup> The difference between 1975-1977 and 2007-2013 is statistically significant ( $p < .05$ ).

<sup>g</sup> The standard error is between 5 and 10 percentage points.

<sup>h</sup> The standard error is greater than 10 percentage points.

- Statistic could not be calculated due to fewer than 25 cases during the time period.

Table 21.8  
Cancer of the Ovary(Invasive)

5-Year Relative and Period Survival (Percent) by Race, Diagnosis Year, Stage and Age

	All Races, Females			White Females			Black Females		
	All	<65	65+	All	<65	65+	All	<65	65+
5-Year Relative Survival (Percent)									
Year of Diagnosis:									
1960-1963 <sup>a</sup>	-	-	-	32	-	-	32	-	-
1970-1973 <sup>a</sup>	-	-	-	36	-	-	32	-	-
1975-1977 <sup>b</sup>	36.0	44.2	21.4	35.3	43.5	21.1	41.3	48.2	24.9 <sup>g</sup>
1978-1980 <sup>b</sup>	37.7	47.3	22.1	36.9	46.5	22.3	38.8	49.2	12.8
1981-1983 <sup>b</sup>	38.9	50.2	23.1	38.5	50.2	23.1	37.5	45.4	22.6
1984-1986 <sup>b</sup>	38.4	49.4	24.1	37.5	48.4	23.8	39.4	52.2	21.2
1987-1989 <sup>b</sup>	38.2	51.1	23.6	38.2	51.2	23.9	33.9	47.2	17.1
1990-1992 <sup>b</sup>	40.5	55.4	24.1	40.4	56.0	24.1	35.5	49.1	16.8
1993-1995 <sup>b</sup>	41.5	55.8	26.5	40.6	55.5	25.9	41.5	54.8	26.9
1996-1998 <sup>b</sup>	43.9	57.1	28.4	43.3	56.6	28.5	39.2	53.3	20.4
1999-2001 <sup>b</sup>	43.9	55.9	28.9	43.6	56.5	28.9	35.6	44.1	21.9
2003-2006 <sup>b</sup>	44.3	57.6	26.9	43.9	57.9	27.2	37.3	46.4	20.9
2007-2013 <sup>b</sup>	46.7 <sup>f</sup>	59.5 <sup>f</sup>	29.1 <sup>f</sup>	46.2 <sup>f</sup>	59.3 <sup>f</sup>	29.6 <sup>f</sup>	38.5	49.5	22.2
5-Year Period Survival (Percent) <sup>cd</sup>									
2013	47.7	59.5	31.2	47.7	60.1	31.7	38.9	48.4	23.2
Stage Distribution (%) 2007-2013 <sup>ce</sup>									
All Stages									
Number of cases	34,158	19,407	14,751	27,980	15,369	12,611	2,975	1,754	1,221
Percent	100%	100%	100%	100%	100%	100%	100%	100%	100%
Localized	15	20	8	14	20	7	15	20	8
Regional	20	24	14	20	24	14	16	18	11
Distant	60	52	69	60	53	69	62	56	71
Unstaged	6	3	9	6	3	9	8	6	10
5-Year Relative Survival (Percent), 2007-2013 <sup>c</sup>									
Age at Diagnosis:									
Ages <45	76.5	-	-	77.5	-	-	69.1	-	-
Ages 45-54	59.1	-	-	59.9	-	-	47.1	-	-
Ages 55-64	49.5	-	-	50.2	-	-	35.4	-	-
Ages 65-74	38.7	-	-	39.7	-	-	27.7	-	-
Ages 75+	20.9	-	-	21.5	-	-	12.4	-	-
Ages <65	59.0	-	-	59.5	-	-	48.4	-	-
Ages 65+	29.5	-	-	30.2	-	-	20.6	-	-
Stage <sup>e</sup> :									
All Stages	46.5	59.0	29.5	46.6	59.5	30.2	37.2	48.4	20.6
Localized	92.5	94.1	86.7	93.3	95.0	87.3	86.5	88.6	77.8 <sup>g</sup>
Regional	73.0	79.8	57.8	73.3	80.2	59.0	61.0	69.8	40.5 <sup>g</sup>
Distant	28.9	37.2	20.2	29.4	38.1	20.8	20.9	27.5	12.8
Unstaged	25.1	54.3	10.7	23.5	53.3	10.5	28.2	54.4 <sup>g</sup>	8.1

Ovary excludes borderline cases or histologies 8442, 8451, 8462, 8472, and 8473.

<sup>a</sup> Based on End Results data from a series of hospital registries and one population-based registry.

<sup>b</sup> SEER 9 areas (San Francisco, Connecticut, Detroit, Hawaii, Iowa, New Mexico, Seattle, Utah, Atlanta).

Based on follow-up of patients into 2014.

<sup>c</sup> SEER 18 areas (San Francisco, Connecticut, Detroit, Hawaii, Iowa, New Mexico, Seattle, Utah, Atlanta, San Jose-Monterey, Los Angeles, Alaska Native Registry, Rural Georgia, California excluding SF/SJM/LA, Kentucky, Louisiana, New Jersey and Georgia excluding ATL/RG).

Based on follow-up of patients into 2014.

<sup>d</sup> Period survival provides a 2013 estimate of survival by piecing together the most recent conditional survival estimates from several cohorts. It is computed here using three year calendar blocks (2010-2012: 0-1 year survival), (2009-2011: 1-2 year survival), (2008-2010: 2-3 year survival), (2007-2009: 3-4 year survival), (2006-2008: 4-5 years survival).

<sup>e</sup> Stage at diagnosis is classified using SEER Summary Stage 2000. Stage distribution percentages may not sum to 100 due to rounding.

<sup>f</sup> The difference between 1975-1977 and 2007-2013 is statistically significant (p<.05).

<sup>g</sup> The standard error is between 5 and 10 percentage points.

<sup>h</sup> The standard error is greater than 10 percentage points.

- Statistic could not be calculated due to fewer than 25 cases during the time period.

Table 22.8  
Cancer of the Pancreas (Invasive)

5-Year Relative and Period Survival (Percent) by Race, Sex, Diagnosis Year, Stage and Age

	All Races			Whites			Blacks		
	Total	Males	Females	Total	Males	Females	Total	Males	Females
5-Year Relative Survival (Percent)									
Year of Diagnosis:									
1960-1963 <sup>a</sup>	-	-	-	1	1	2	1	0	3
1970-1973 <sup>a</sup>	-	-	-	2	2	2	2	0	3
1975-1977 <sup>b</sup>	2.5	2.6	2.2	2.5	2.7	2.3	2.3	2.5	1.9
1978-1980 <sup>b</sup>	2.9	2.7	3.0	2.5	2.6	2.5	5.7	4.5	7.0
1981-1983 <sup>b</sup>	2.7	2.4	3.1	2.5	2.1	3.0	3.6	3.7	3.2
1984-1986 <sup>b</sup>	2.9	2.3	3.5	2.6	2.1	3.1	4.7	3.9	5.3
1987-1989 <sup>b</sup>	3.5	3.3	3.7	3.2	3.1	3.3	5.5	5.1	5.8
1990-1992 <sup>b</sup>	4.3	4.1	4.5	4.4	4.2	4.5	3.6	3.2	4.0
1993-1995 <sup>b</sup>	4.0	3.7	4.3	3.9	3.6	4.2	3.7	3.6	3.7
1996-1998 <sup>b</sup>	4.4	4.6	4.1	4.1	4.7	3.6	3.4	3.1	3.5
1999-2001 <sup>b</sup>	5.1	5.2	5.0	5.0	5.5	4.4	5.6	3.7	7.4
2003-2006 <sup>b</sup>	6.1	5.7	6.5	6.2	5.9	6.6	5.0	4.3	5.5
2007-2013 <sup>b</sup>	8.7 <sup>f</sup>	9.2 <sup>f</sup>	8.3 <sup>f</sup>	8.9 <sup>f</sup>	9.3 <sup>f</sup>	8.3 <sup>f</sup>	7.5 <sup>f</sup>	7.4 <sup>f</sup>	7.7 <sup>f</sup>
5-Year Period Survival (Percent) <sup>cd</sup>									
2013	9.1	9.2	9.0	8.9	9.2	8.6	9.4	7.9	10.7
Stage Distribution (%) 2007-2013 <sup>ce</sup>									
All Stages									
Number of cases	60,189	30,328	29,861	47,716	24,414	23,302	7,370	3,429	3,941
Percent	100%	100%	100%	100%	100%	100%	100%	100%	100%
Localized	10	9	11	10	9	11	10	8	11
Regional	29	29	29	29	29	29	26	25	27
Distant	52	55	50	52	54	50	56	60	53
Unstaged	9	8	10	9	8	11	7	6	8
5-Year Relative Survival (Percent), 2007-2013 <sup>c</sup>									
Age at Diagnosis:									
Ages <45	29.7	24.2	36.2	28.7	24.6	33.8	31.5	19.6	41.7
Ages 45-54	13.5	11.6	16.4	13.4	11.3	16.7	13.2	12.8	13.8
Ages 55-64	9.4	8.8	10.2	9.6	9.2	10.1	6.6	5.5	8.0
Ages 65-74	7.6	7.9	7.4	7.9	8.2	7.6	5.6	3.8	7.0
Ages 75+	4.1	4.2	3.9	4.1	4.2	4.0	3.6	3.8	3.5
Ages <65	12.2	10.8	14.3	12.1	10.9	13.9	11.0	8.9	13.6
Ages 65+	5.6	6.1	5.2	5.7	6.3	5.3	4.6	3.8	5.0
Stage <sup>e</sup> :									
All Stages	8.2	8.2	8.1	8.1	8.2	7.9	7.8	6.9	8.5
Localized	31.5	32.8	30.2	31.0	32.7	29.4	28.3	25.8	29.9
Regional	11.5	12.1	10.9	11.8	12.3	11.2	10.6	11.1	10.2
Distant	2.7	2.6	2.8	2.6	2.7	2.6	2.6	2.0	3.2
Unstaged	5.1	6.0	4.4	4.4	5.2	3.8	9.2	9.4	9.0

<sup>a</sup> Based on End Results data from a series of hospital registries and one population-based registry.

<sup>b</sup> SEER 9 areas (San Francisco, Connecticut, Detroit, Hawaii, Iowa, New Mexico, Seattle, Utah, Atlanta).  
Based on follow-up of patients into 2014.

<sup>c</sup> SEER 18 areas (San Francisco, Connecticut, Detroit, Hawaii, Iowa, New Mexico, Seattle, Utah, Atlanta, San Jose-Monterey, Los Angeles, Alaska Native Registry, Rural Georgia, California excluding SF/SJM/LA, Kentucky, Louisiana, New Jersey and Georgia excluding ATL/RG).  
Based on follow-up of patients into 2014.

<sup>d</sup> Period survival provides a 2013 estimate of survival by piecing together the most recent conditional survival estimates from several cohorts. It is computed here using three year calendar blocks (2010-2012: 0-1 year survival), (2009-2011: 1-2 year survival), (2008-2010: 2-3 year survival), (2007-2009: 3-4 year survival), (2006-2008: 4-5 years survival).

<sup>e</sup> Stage at diagnosis is classified using SEER Summary Stage 2000. Stage distribution percentages may not sum to 100 due to rounding.

<sup>f</sup> The difference between 1975-1977 and 2007-2013 is statistically significant ( $p < .05$ ).

<sup>g</sup> The standard error is between 5 and 10 percentage points.

<sup>h</sup> The standard error is greater than 10 percentage points.

- Statistic could not be calculated due to fewer than 25 cases during the time period.

Table 23.8  
Cancer of the Prostate (Invasive)

## 5-Year Relative and Period Survival (Percent) by Race, Diagnosis Year, Stage and Age

	All Races, Males			White Males			Black Males		
	All	<65	65+	All	<65	65+	All	<65	65+
5-Year Relative Survival (Percent)									
Year of Diagnosis:									
1960-1963 <sup>a</sup>	-	-	-	50	-	-	35	-	-
1970-1973 <sup>a</sup>	-	-	-	63	-	-	55	-	-
1975-1977 <sup>b</sup>	67.8	73.4	66.1	68.5	75.2	66.6	60.7	62.0	60.1
1978-1980 <sup>b</sup>	70.1	75.2	68.6	71.2	76.7	69.6	62.1	65.0	60.6
1981-1983 <sup>b</sup>	72.0	76.0	70.9	73.1	77.6	71.9	62.8	65.0	61.9
1984-1986 <sup>b</sup>	75.2	77.4	74.6	76.4	79.0	75.7	65.7	67.3	64.9
1987-1989 <sup>b</sup>	82.8	83.2	82.7	84.4	84.7	84.3	71.1	72.8	70.6
1990-1992 <sup>b</sup>	92.9	93.0	92.9	94.1	94.0	94.1	84.4	86.8	83.5
1993-1995 <sup>b</sup>	95.2	95.9	94.9	95.9	96.6	95.6	91.7	93.3	90.8
1996-1998 <sup>b</sup>	97.4	98.5	96.7	97.9	98.9	97.2	94.9	96.7	93.4
1999-2001 <sup>b</sup>	99.3	99.1	99.3	99.7	99.5	99.6	97.3	98.0	96.3
2003-2006 <sup>b</sup>	99.6	99.4	99.6	99.8	99.6	99.7	97.8	98.6	96.7
2007-2013 <sup>b</sup>	99.2 <sup>f</sup>	99.5 <sup>f</sup>	98.9 <sup>f</sup>	99.6 <sup>f</sup>	99.8 <sup>f</sup>	99.3 <sup>f</sup>	97.4 <sup>f</sup>	98.4 <sup>f</sup>	95.8 <sup>f</sup>
5-Year Period Survival (Percent) <sup>cd</sup>									
2013	98.5	99.0	98.0	98.6	99.2	98.0	96.5	97.8	94.7
Stage Distribution (%) 2007-2013 <sup>ce</sup>									
All Stages									
Number of cases	360,038	160,985	199,053	274,914	119,372	155,542	54,642	30,281	24,361
Percent	100%	100%	100%	100%	100%	100%	100%	100%	100%
Localized	79	79	79	79	79	80	81	81	81
Regional	12	16	9	13	16	10	10	13	7
Distant	5	3	6	5	3	6	6	4	7
Unstaged	4	2	5	3	1	4	3	2	5
5-Year Relative Survival (Percent), 2007-2013 <sup>c</sup>									
Age at Diagnosis:									
Ages <45	95.9	-	-	95.1	-	-	97.4	-	-
Ages 45-54	98.1	-	-	98.2	-	-	97.6	-	-
Ages 55-64	99.4	-	-	99.7	-	-	97.9	-	-
Ages 65-74	100.0	-	-	100.0	-	-	97.2	-	-
Ages 75+	94.1	-	-	93.8	-	-	88.8	-	-
Ages <65	99.0	-	-	99.3	-	-	97.8	-	-
Ages 65+	98.3	-	-	98.5	-	-	94.9	-	-
Stage <sup>e</sup> :									
All Stages	98.6	99.0	98.3	98.9	99.3	98.5	96.6	97.8	94.9
Localized	100.0	100.0	100.0	100.0	100.0	100.0	100.0	100.0	100.0
Regional	100.0	100.0	100.0	100.0	100.0	100.0	100.0	100.0	98.2
Distant	29.8	33.2	28.3	29.2	32.4	27.9	29.3	32.9	26.6
Unstaged	81.2	90.4	78.3	75.3	87.7	71.8	69.9	84.1	63.1

<sup>a</sup> Based on End Results data from a series of hospital registries and one population-based registry.

<sup>b</sup> SEER 9 areas (San Francisco, Connecticut, Detroit, Hawaii, Iowa, New Mexico, Seattle, Utah, Atlanta).

Based on follow-up of patients into 2014.

<sup>c</sup> SEER 18 areas (San Francisco, Connecticut, Detroit, Hawaii, Iowa, New Mexico, Seattle, Utah, Atlanta, San Jose-Monterey, Los Angeles, Alaska Native Registry, Rural Georgia, California excluding SF/SJM/LA, Kentucky, Louisiana, New Jersey and Georgia excluding ATL/RG).

Based on follow-up of patients into 2014.

<sup>d</sup> Period survival provides a 2013 estimate of survival by piecing together the most recent conditional survival estimates from several cohorts. It is computed here using three year calendar blocks (2010-2012: 0-1 year survival), (2009-2011: 1-2 year survival), (2008-2010: 2-3 year survival), (2007-2009: 3-4 year survival), (2006-2008: 4-5 years survival).

<sup>e</sup> Stage at diagnosis is classified using SEER Summary Stage 2000. Stage distribution percentages may not sum to 100 due to rounding.

<sup>f</sup> The difference between 1975-1977 and 2007-2013 is statistically significant ( $p < .05$ ).

<sup>g</sup> The standard error is between 5 and 10 percentage points.

<sup>h</sup> The standard error is greater than 10 percentage points.

- Statistic could not be calculated due to fewer than 25 cases during the time period.

Table 24.8  
Cancer of the Stomach (Invasive)

5-Year Relative and Period Survival (Percent) by Race, Sex, Diagnosis Year, Stage and Age

	All Races			Whites			Blacks		
	Total	Males	Females	Total	Males	Females	Total	Males	Females
5-Year Relative Survival (Percent)									
Year of Diagnosis:									
1960-1963 <sup>a</sup>	-	-	-	11	10	13	8	5	14
1970-1973 <sup>a</sup>	-	-	-	13	12	14	13	15	10
1975-1977 <sup>b</sup>	15.2	14.4	16.6	14.1	13.1	15.8	16.1	16.1	16.1
1978-1980 <sup>b</sup>	16.1	14.3	18.9	15.4	13.6	18.2	16.4	15.6	18.0
1981-1983 <sup>b</sup>	17.2	16.4	18.7	16.2	15.4	17.5	16.4	16.2	16.7
1984-1986 <sup>b</sup>	17.6	15.5	20.9	16.8	14.3	20.9	19.1	16.9	22.1
1987-1989 <sup>b</sup>	19.7	17.0	24.3	18.3	15.5	23.1	18.8	16.6	22.5
1990-1992 <sup>b</sup>	20.9	18.1	25.4	18.8	16.1	23.2	22.7	22.0	23.7
1993-1995 <sup>b</sup>	21.0	20.1	22.6	20.0	18.9	21.9	19.3	17.5	21.9
1996-1998 <sup>b</sup>	22.3	21.0	24.2	20.3	18.6	23.2	22.6	20.4	25.3
1999-2001 <sup>b</sup>	24.1	23.4	25.2	22.3	21.0	24.4	23.2	25.0	20.7
2003-2006 <sup>b</sup>	27.9	26.1	30.8	26.9	25.5	29.3	28.6	23.6	34.9
2007-2013 <sup>b</sup>	31.1 <sup>f</sup>	28.9 <sup>f</sup>	34.6 <sup>f</sup>	29.9 <sup>f</sup>	28.1 <sup>f</sup>	33.1 <sup>f</sup>	31.4 <sup>f</sup>	25.7 <sup>f</sup>	38.5 <sup>f</sup>
5-Year Period Survival (Percent) <sup>cd</sup>									
2013	32.5	29.9	36.6	31.4	29.1	35.4	33.3	27.1	41.6
Stage Distribution (%) 2007-2013 <sup>ce</sup>									
All Stages									
Number of cases	36,344	22,005	14,339	25,419	15,894	9,525	5,010	2,817	2,193
Percent	100%	100%	100%	100%	100%	100%	100%	100%	100%
Localized	27	24	31	26	24	31	28	25	32
Regional	28	29	24	27	29	23	27	28	26
Distant	35	37	32	37	38	33	35	39	31
Unstaged	10	9	12	10	9	12	10	9	11
5-Year Relative Survival (Percent), 2007-2013 <sup>c</sup>									
Age at Diagnosis:									
Ages <45	34.4	30.3	38.8	32.4	27.9	37.7	35.4	30.5	40.1
Ages 45-54	34.0	31.1	39.0	32.4	29.5	38.0	36.4	31.9	43.3
Ages 55-64	34.1	31.8	39.0	32.8	30.8	37.5	34.1	29.6	42.1
Ages 65-74	33.3	29.8	39.8	32.0	29.1	38.1	29.5	22.6	40.7
Ages 75+	23.5	21.7	25.5	22.6	20.8	24.8	20.5	15.7	24.3
Ages <65	34.1	31.4	39.0	32.6	30.0	37.7	35.1	30.5	42.1
Ages 65+	27.9	25.8	30.9	26.8	24.9	29.6	25.2	20.0	31.2
Stage <sup>e</sup> :									
All Stages	30.6	28.4	34.1	29.3	27.2	32.8	30.3	25.7	36.1
Localized	67.2	64.2	70.7	66.3	63.8	69.5	64.2	56.8	71.3
Regional	30.7	30.4	31.4	29.1	29.0	29.3	30.6	30.7	30.2
Distant	5.2	5.4	4.7	5.0	5.4	4.3	6.1	5.5	7.0
Unstaged	22.1	19.3	25.1	21.5	18.8	24.6	20.5	13.0	27.4

<sup>a</sup> Based on End Results data from a series of hospital registries and one population-based registry.<sup>b</sup> SEER 9 areas (San Francisco, Connecticut, Detroit, Hawaii, Iowa, New Mexico, Seattle, Utah, Atlanta).

Based on follow-up of patients into 2014.

<sup>c</sup> SEER 18 areas (San Francisco, Connecticut, Detroit, Hawaii, Iowa, New Mexico, Seattle, Utah, Atlanta, San Jose-Monterey, Los Angeles, Alaska Native Registry, Rural Georgia, California excluding SF/SJM/LA, Kentucky, Louisiana, New Jersey and Georgia excluding ATL/RG).

Based on follow-up of patients into 2014.

<sup>d</sup> Period survival provides a 2013 estimate of survival by piecing together the most recent conditional survival estimates from several cohorts. It is computed here using three year calendar blocks (2010-2012: 0-1 year survival), (2009-2011: 1-2 year survival), (2008-2010: 2-3 year survival), (2007-2009: 3-4 year survival), (2006-2008: 4-5 years survival).<sup>e</sup> Stage at diagnosis is classified using SEER Summary Stage 2000. Stage distribution percentages may not sum to 100 due to rounding.<sup>f</sup> The difference between 1975-1977 and 2007-2013 is statistically significant (p<.05).<sup>g</sup> The standard error is between 5 and 10 percentage points.<sup>h</sup> The standard error is greater than 10 percentage points.

- Statistic could not be calculated due to fewer than 25 cases during the time period.

Table 25.8  
Cancer of the Testis (Invasive)

5-Year Relative and Period Survival (Percent) by Race, Diagnosis Year, Stage and Age

	All Races, Males			White Males			Black Males		
	All	<50	50+	All	<50	50+	All	<50	50+
5-Year Relative Survival (Percent)									
Year of Diagnosis:									
1960-1963 <sup>a</sup>	-	-	-	63	-	-	-	-	-
1970-1973 <sup>a</sup>	-	-	-	72	-	-	-	-	-
1975-1977 <sup>b</sup>	82.6	83.3	77.6	82.6	83.3	77.3	-	-	-
1978-1980 <sup>b</sup>	88.8	89.5	82.2	89.2	89.8	83.1	73.1 <sup>g</sup>	78.0 <sup>g</sup>	-
1981-1983 <sup>b</sup>	92.0	92.5	85.5	92.2	92.8	86.2	87.7 <sup>g</sup>	84.7 <sup>g</sup>	-
1984-1986 <sup>b</sup>	92.6	93.6	80.4	92.9	94.0	80.6	87.0 <sup>g</sup>	89.4 <sup>g</sup>	-
1987-1989 <sup>b</sup>	95.2	95.0	95.7	95.5	95.7	95.3	88.4 <sup>g</sup>	87.8 <sup>g</sup>	-
1990-1992 <sup>b</sup>	95.8	95.8	93.7	96.2	96.1	94.6	84.2 <sup>g</sup>	89.0 <sup>g</sup>	-
1993-1995 <sup>b</sup>	95.8	96.4	86.7	96.1	96.6	87.8	88.0	89.4	-
1996-1998 <sup>b</sup>	95.6	96.3	86.6	95.8	96.4	86.6	89.0	90.3	-
1999-2001 <sup>b</sup>	96.2	96.4	91.9	96.5	96.7	92.8	87.6	89.0	-
2003-2006 <sup>b</sup>	96.6	97.0	91.8	97.1	97.4	92.9	86.9	87.0	-
2007-2013 <sup>b</sup>	96.5 <sup>f</sup>	96.6 <sup>f</sup>	95.4 <sup>f</sup>	96.9 <sup>f</sup>	97.0 <sup>f</sup>	95.9 <sup>f</sup>	92.0	91.1	93.6 <sup>g</sup>
5-Year Period Survival (Percent) <sup>cd</sup>									
2013	94.8	95.3	90.6	94.9	95.5	90.4	89.5	90.3	84.3
Stage Distribution (%) 2007-2013 <sup>ce</sup>									
All Stages									
Number of cases	15,943	14,107	1,836	14,309	12,644	1,665	499	428	71
Percent	100%	100%	100%	100%	100%	100%	100%	100%	100%
Localized	68	68	67	68	68	66	61	59	69
Regional	18	18	18	19	19	19	22	23	15
Distant	13	13	13	13	13	13	15	16	10
Unstaged	1	1	2	1	1	2	3	2	6
5-Year Relative Survival (Percent), 2007-2013 <sup>c</sup>									
Age at Diagnosis:									
Ages <45	95.3	-	-	95.5	-	-	90.7	-	-
Ages 45-54	95.8	-	-	95.8	-	-	91.7	-	-
Ages 55-64	92.4	-	-	91.9	-	-	100.0	-	-
Ages 65-74	84.5	-	-	85.2	-	-	-	-	-
Ages 75+	80.0 <sup>g</sup>	-	-	82.8 <sup>g</sup>	-	-	-	-	-
Ages <65	95.3	-	-	95.4	-	-	91.9	-	-
Ages 65+	83.9	-	-	85.1	-	-	-	-	-
Stage <sup>e</sup> :									
All Stages	95.1	95.4	92.8	95.3	95.5	93.0	91.0	91.4	87.5 <sup>g</sup>
Localized	99.2	99.1	99.2	99.3	99.2	99.0	97.3	97.1	95.3 <sup>g</sup>
Regional	96.1	96.3	93.8	96.5	96.6	94.5	89.8	90.4	-
Distant	73.2	74.7	61.6	73.8	75.2	62.6	68.9 <sup>g</sup>	70.2 <sup>g</sup>	-
Unstaged	76.7	84.1	50.1 <sup>g</sup>	74.9	82.8	48.1 <sup>g</sup>	-	-	-

<sup>a</sup> Based on End Results data from a series of hospital registries and one population-based registry.<sup>b</sup> SEER 9 areas (San Francisco, Connecticut, Detroit, Hawaii, Iowa, New Mexico, Seattle, Utah, Atlanta).

Based on follow-up of patients into 2014.

<sup>c</sup> SEER 18 areas (San Francisco, Connecticut, Detroit, Hawaii, Iowa, New Mexico, Seattle, Utah, Atlanta, San Jose-Monterey, Los Angeles, Alaska Native Registry, Rural Georgia, California excluding SF/SJM/LA, Kentucky, Louisiana, New Jersey and Georgia excluding ATL/RG).

Based on follow-up of patients into 2014.

<sup>d</sup> Period survival provides a 2013 estimate of survival by piecing together the most recent conditional survival estimates from several cohorts. It is computed here using three year calendar blocks (2010-2012: 0-1 year survival), (2009-2011: 1-2 year survival), (2008-2010: 2-3 year survival), (2007-2009: 3-4 year survival), (2006-2008: 4-5 years survival).<sup>e</sup> Stage at diagnosis is classified using SEER Summary Stage 2000. Stage distribution percentages may not sum to 100 due to rounding.<sup>f</sup> The difference between 1975-1977 and 2007-2013 is statistically significant (p<.05).<sup>g</sup> The standard error is between 5 and 10 percentage points.<sup>h</sup> The standard error is greater than 10 percentage points.

- Statistic could not be calculated due to fewer than 25 cases during the time period.

Table 26.8  
Cancer of the Thyroid (Invasive)

5-Year Relative and Period Survival (Percent) by Race, Sex, Diagnosis Year, Stage and Age

	All Races			Whites			Blacks		
	Total	Males	Females	Total	Males	Females	Total	Males	Females
5-Year Relative Survival (Percent)									
Year of Diagnosis:									
1960-1963 <sup>a</sup>	-	-	-	83	75	87	-	-	-
1970-1973 <sup>a</sup>	-	-	-	86	82	87	-	-	-
1975-1977 <sup>b</sup>	92.1	91.1	92.5	91.8	90.7	92.2	89.8	-	91.0
1978-1980 <sup>b</sup>	92.1	92.1	93.6	91.5	87.5	92.7	90.2	68.0 <sup>h</sup>	95.5
1981-1983 <sup>b</sup>	93.6	92.2	93.9	93.1	90.9	93.7	96.4	100.0	93.2
1984-1986 <sup>b</sup>	93.2	89.8	94.3	93.2	89.4	94.4	89.3	85.5 <sup>g</sup>	90.3
1987-1989 <sup>b</sup>	94.4	91.6	95.2	94.1	91.5	94.9	92.3	91.2 <sup>g</sup>	92.3
1990-1992 <sup>b</sup>	94.3	90.5	95.5	94.9	91.6	96.0	85.8	84.5 <sup>g</sup>	86.2
1993-1995 <sup>b</sup>	95.4	91.6	96.7	95.6	91.5	96.9	93.2	87.8 <sup>g</sup>	94.3
1996-1998 <sup>b</sup>	95.6	91.0	96.9	95.9	91.3	97.3	95.0	86.5 <sup>g</sup>	96.4
1999-2001 <sup>b</sup>	96.5	94.3	97.1	96.9	95.0	97.4	92.0	88.4 <sup>g</sup>	92.4
2003-2006 <sup>b</sup>	97.6	94.9	98.4	97.8	95.1	98.5	96.6	95.0	96.7
2007-2013 <sup>b</sup>	98.2 <sup>f</sup>	96.2 <sup>f</sup>	98.7 <sup>f</sup>	98.4 <sup>f</sup>	96.5 <sup>f</sup>	99.0 <sup>f</sup>	96.9 <sup>f</sup>	90.8	97.9 <sup>f</sup>
5-Year Period Survival (Percent) <sup>cd</sup>									
2013	98.3	95.8	98.9	98.5	96.2	99.0	97.0	94.4	97.6
Stage Distribution (%) 2007-2013 <sup>ce</sup>									
All Stages									
Number of cases	70,959	16,221	54,738	57,251	13,549	43,702	4,758	829	3,929
Percent	100%	100%	100%	100%	100%	100%	100%	100%	100%
Localized	68	59	70	68	58	71	80	72	81
Regional	27	33	25	27	34	25	14	18	13
Distant	4	7	3	4	6	3	4	7	4
Unstaged	2	2	2	2	2	2	2	2	2
5-Year Relative Survival (Percent), 2007-2013 <sup>c</sup>									
Age at Diagnosis:									
Ages <45	99.8	99.3	99.9	99.8	99.3	99.9	99.2	98.1	99.4
Ages 45-54	99.1	96.7	99.7	99.1	96.8	99.7	99.4	97.2	99.6
Ages 55-64	97.7	95.0	98.6	97.9	95.4	98.8	96.3	91.3	97.1
Ages 65-74	95.9	92.1	97.2	96.1	92.7	97.4	93.3	83.8 <sup>g</sup>	95.7
Ages 75+	86.9	85.9	87.0	88.1	87.6	88.1	76.3	63.7 <sup>g</sup>	77.5
Ages <65	99.1	97.3	99.6	99.2	97.4	99.7	98.7	96.1	99.0
Ages 65+	93.1	90.2	93.9	93.8	91.1	94.4	88.9	81.4	91.1
Stage <sup>e</sup> :									
All Stages	98.2	95.8	98.8	98.4	96.1	98.9	97.2	93.7	97.9
Localized	99.9	99.8	99.9	99.9	99.9	100.0	99.7	98.9	99.8
Regional	98.0	96.5	98.5	98.2	96.8	98.7	94.9	90.0	96.3
Distant	56.4	50.2	60.2	56.7	50.3	60.8	48.8	35.1 <sup>g</sup>	53.9
Unstaged	88.6	84.0	90.0	87.6	85.7	88.2	87.2	-	89.9

<sup>a</sup> Based on End Results data from a series of hospital registries and one population-based registry.<sup>b</sup> SEER 9 areas (San Francisco, Connecticut, Detroit, Hawaii, Iowa, New Mexico, Seattle, Utah, Atlanta).

Based on follow-up of patients into 2014.

<sup>c</sup> SEER 18 areas (San Francisco, Connecticut, Detroit, Hawaii, Iowa, New Mexico, Seattle, Utah, Atlanta, San Jose-Monterey, Los Angeles, Alaska Native Registry, Rural Georgia, California excluding SF/SJM/LA, Kentucky, Louisiana, New Jersey and Georgia excluding ATL/RG).

Based on follow-up of patients into 2014.

<sup>d</sup> Period survival provides a 2013 estimate of survival by piecing together the most recent conditional survival estimates from several cohorts. It is computed here using three year calendar blocks (2010-2012: 0-1 year survival), (2009-2011: 1-2 year survival), (2008-2010: 2-3 year survival), (2007-2009: 3-4 year survival), (2006-2008: 4-5 years survival).<sup>e</sup> Stage at diagnosis is classified using SEER Summary Stage 2000. Stage distribution percentages may not sum to 100 due to rounding.<sup>f</sup> The difference between 1975-1977 and 2007-2013 is statistically significant (p<.05).<sup>g</sup> The standard error is between 5 and 10 percentage points.<sup>h</sup> The standard error is greater than 10 percentage points.

- Statistic could not be calculated due to fewer than 25 cases during the time period.

Table 27.8  
Cancer of the Urinary Bladder (Invasive and *In Situ*)

5-Year Relative and Period Survival (Percent) by Race, Sex, Diagnosis Year, Stage and Age

	All Races			Whites			Blacks		
	Total	Males	Females	Total	Males	Females	Total	Males	Females
5-Year Relative Survival (Percent)									
Year of Diagnosis:									
1960-1963 <sup>a</sup>	-	-	-	53	53	53	24	24	24
1970-1973 <sup>a</sup>	-	-	-	61	61	60	36	38	27
1975-1977 <sup>b</sup>	72.3	73.7	68.3	73.3	74.3	70.3	50.3	56.5	38.1 <sup>g</sup>
1978-1980 <sup>b</sup>	73.9	75.1	70.4	74.7	75.4	72.3	54.5	62.6	40.1
1981-1983 <sup>b</sup>	76.7	78.1	72.7	77.4	78.6	74.0	59.5	64.9	47.0 <sup>g</sup>
1984-1986 <sup>b</sup>	76.7	78.1	72.7	77.2	78.4	73.6	59.4	62.3	52.8
1987-1989 <sup>b</sup>	79.0	81.3	71.9	79.8	81.9	73.1	62.6	67.5	52.9
1990-1992 <sup>b</sup>	79.2	81.7	71.9	80.2	82.6	73.1	63.1	65.7	58.5
1993-1995 <sup>b</sup>	80.2	82.1	75.0	81.0	82.5	76.9	60.6	67.8	46.2
1996-1998 <sup>b</sup>	79.1	80.4	75.4	79.8	81.1	75.9	62.7	67.5	56.0
1999-2001 <sup>b</sup>	80.0	80.9	77.3	81.0	81.5	79.4	67.5	71.8	60.0
2003-2006 <sup>b</sup>	80.1	81.9	74.8	80.9	82.6	76.0	63.8	68.3	55.8
2007-2013 <sup>b</sup>	78.0 <sup>f</sup>	79.2 <sup>f</sup>	74.4 <sup>f</sup>	78.6 <sup>f</sup>	79.6 <sup>f</sup>	75.4 <sup>f</sup>	65.4 <sup>f</sup>	70.0 <sup>f</sup>	56.2 <sup>f</sup>
5-Year Period Survival (Percent) <sup>cd</sup>									
2013	77.2	78.5	73.0	77.7	78.8	74.2	64.5	68.5	56.3
Stage Distribution (%) 2007-2013 <sup>ce</sup>									
All Stages									
Number of cases	89,130	67,328	21,802	78,812	59,971	18,841	4,994	3,339	1,655
Percent	100%	100%	100%	100%	100%	100%	100%	100%	100%
In Situ	51	52	50	52	52	51	40	44	33
Localized	34	35	33	34	35	33	37	36	38
Regional	7	7	8	7	7	8	11	9	15
Distant	4	4	6	4	4	5	8	7	9
Unstaged	3	3	3	3	2	3	4	4	5
5-Year Relative Survival (Percent), 2007-2013 <sup>c</sup>									
Age at Diagnosis:									
Ages <45	88.8	90.4	84.5	89.5	90.9	86.0	76.2	79.9	63.5 <sup>g</sup>
Ages 45-54	84.5	85.2	82.2	85.4	85.8	84.3	70.1	74.0	59.3
Ages 55-64	81.8	81.9	81.3	82.4	82.3	82.5	68.3	70.0	62.9
Ages 65-74	79.8	80.5	77.1	80.3	81.1	77.7	65.1	67.1	60.5
Ages 75+	70.1	72.1	64.7	70.5	72.2	65.9	56.2	63.0	46.8
Ages <65	83.1	83.4	81.9	83.7	83.8	83.3	69.6	72.1	62.0
Ages 65+	74.4	76.0	69.5	74.9	76.3	70.4	60.5	65.4	52.6
Stage <sup>e</sup> :									
All Stages	77.3	78.6	73.3	77.8	78.8	74.4	64.4	68.6	55.8
In Situ	95.7	95.3	97.1	95.8	95.3	97.3	91.2	91.4	90.0
Localized	70.1	72.2	63.3	70.4	72.3	63.6	60.8	65.4	52.1
Regional	35.2	36.6	31.6	35.8	37.2	31.5	28.0	24.6	31.0
Distant	5.0	5.2	4.7	4.7	4.6	5.0	5.9	6.7	4.7
Unstaged	45.7	50.2	35.1	44.2	48.3	34.2	40.0	50.6 <sup>g</sup>	20.5 <sup>g</sup>

<sup>a</sup> Based on End Results data from a series of hospital registries and one population-based registry.

<sup>b</sup> SEER 9 areas (San Francisco, Connecticut, Detroit, Hawaii, Iowa, New Mexico, Seattle, Utah, Atlanta).

Based on follow-up of patients into 2014.

<sup>c</sup> SEER 18 areas (San Francisco, Connecticut, Detroit, Hawaii, Iowa, New Mexico, Seattle, Utah, Atlanta, San Jose-Monterey, Los Angeles, Alaska Native Registry, Rural Georgia, California excluding SF/SJM/LA, Kentucky, Louisiana, New Jersey and Georgia excluding ATL/RG).

Based on follow-up of patients into 2014.

<sup>d</sup> Period survival provides a 2013 estimate of survival by piecing together the most recent conditional survival estimates from several cohorts. It is computed here using three year calendar blocks (2010-2012: 0-1 year survival), (2009-2011: 1-2 year survival), (2008-2010: 2-3 year survival), (2007-2009: 3-4 year survival), (2006-2008: 4-5 years survival).

<sup>e</sup> Stage at diagnosis is classified using SEER Summary Stage 2000. Stage distribution percentages may not sum to 100 due to rounding.

<sup>f</sup> The difference between 1975-1977 and 2007-2013 is statistically significant ( $p < .05$ ).

<sup>g</sup> The standard error is between 5 and 10 percentage points.

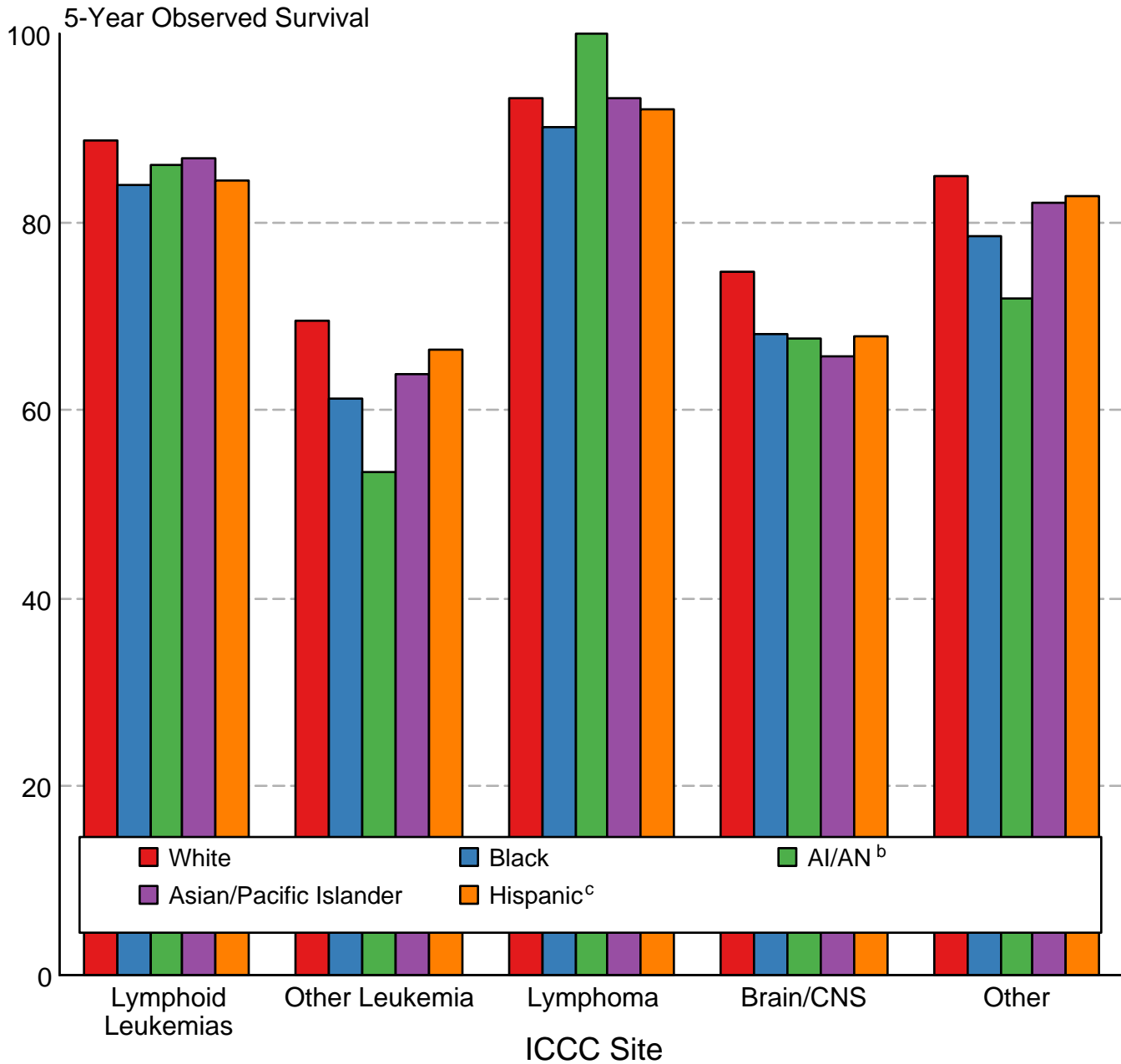
<sup>h</sup> The standard error is greater than 10 percentage points.

- Statistic could not be calculated due to fewer than 25 cases during the time period.



Figure 29.3

## Childhood Cancer 5-Year Observed Survival (%) by ICCC Group<sup>a</sup> and Race/Ethnicity Both Sexes, Under 20 Years of Age, 2007-2013



Source: SEER 18 areas (San Francisco, Connecticut, Detroit, Hawaii, Iowa, New Mexico, Seattle, Utah, Atlanta, San Jose-Monterey, Los Angeles, Alaska Native Registry, Rural Georgia, California excluding SF/SJM/LA, Kentucky, Louisiana, New Jersey and Georgia excluding ATL/RG).

International Classification of Childhood Cancer is based on ICD-O-3. Steliarova-Foucher E, Stiller C, Lacour B, Kaatsch P. International Classification of Childhood Cancer, Third Edition. Cancer. April 1, 2005; Vol 103, No. 7, pg 1457-1467.

<sup>a</sup> Excludes myelodysplastic syndromes (MDS) and benign brain tumors.

<sup>b</sup> American Indian/Alaska Native. Survival data for American Indian/Alaska Native are based on the CHSDA (Contract Health Service Delivery Area) counties.

<sup>c</sup> Hispanic is not mutually exclusive from whites, blacks, Asian/Pacific Islanders, and American Indians/Alaska Natives. Survival data for Hispanics are based on NHIA and excludes cases from the Alaska Native Registry.